

BENJAMIN RECHARGE™ HIGH PRESSURE AIR COMPRESSOR OWNER'S MANUAL

READ ALL INSTRUCTIONS AND WARNINGS IN THIS MANUAL BEFORE USING
FAILURE TO DO SO CAN RESULT IN SERIOUS INJURY OF DEATH

Benjamin Airguns

A Velocity Outdoor Company
7629 Routes 5 & 20
Bloomfield, NY 14469
United States of America
1.800.724.7486
crosman.com
Made in China

BHPAC-515


If you have any questions, contact Crosman at 1-800-724-7486, 585-657-6161 or crosman.com.

NOTE: This Air Compressor is designed for use only with PCP airguns, airgun/paintball cylinders, and reservoir air tanks intended for use with those products.

NOTE: Air Compressor is not designed for use with airgun/paintball cylinders larger than 6.8L (6800 cc).

NOTE: High altitude and certain air temperatures can impact the compressor's performance.

1. IMPORTANT SAFETY INFORMATION



WARNING:

- **EXPLOSION DANGER.** NEVER EXCEED THE MANUFACTURER'S MAXIMUM ALLOWABLE PRESSURE RATING OF PCP AIRGUNS, AIRGUN/PAINTBALL CYLINDERS, AND RESERVOIR AIR TANKS AT ROOM TEMPERATURE.
- IF YOU EXCEED THE PRESSURE RATING, THE PCP AIRGUN OR CYLINDER CAN FAIL, EXPLODE, AND CAUSE SERIOUS INJURY OR DEATH. IF YOU EXCEED THE PRESSURE RATING, THIS AIR COMPRESSOR CAN FAIL AND CAUSE SERIOUS INJURY OR DEATH.
- USE ONLY ACCESSORIES AND ATTACHMENTS INTENDED FOR THIS AIR COMPRESSOR.
- IF INCORRECT ACCESSORIES OR ATTACHMENTS OR USED, THIS AIR COMPRESSOR, THE ACCESSORIES, THE ATTACHMENTS, THE PCP AIRGUNS, OR THE AIRGUN/PAINTBALL CYLINDERS CAN FAIL, EXPLODE, AND CAUSE SERIOUS INJURY OR DEATH.
- NEVER USE THIS AIR COMPRESSOR TO INFLATE ANYTHING OTHER THAN PCP AIRGUNS OR AIRGUN/PAINTBALL CYLINDERS, SUCH AS A CAR, TRUCK, OR BICYCLE TIRES OR OTHER LOW PRESSURE INFLATABLE OBJECTS SUCH AS RAFTS AND TOYS, BECAUSE THOSE OBJECTS COULD BECOME OVERINFLATED, FAIL, EXPLODE, AND CAUSE SERIOUS INJURY OR DEATH.
- ALWAYS WEAR EYE PROTECTION WHEN USING THIS AIR COMPRESSOR TO SHIELD YOUR EYES.
- WHEN USING THIS AIR COMPRESSOR, ALWAYS USE COMMON SENSE AND FOLLOW BASIC SAFETY PRECAUTIONS TO REDUCE THE RISK OF SERIOUS INJURY OR DEATH.
- DO NOT USE THIS AIR COMPRESSOR TO FILL A SCUBA TANK TO BE USED FOR SCUBA DIVING. THE AIR FROM THIS AIR COMPRESSOR IS NOT BREATHABLE.

ADULT SUPERVISION IS ALWAYS REQUIRED WHEN USING THIS AIR COMPRESSOR.

ALWAYS STORE AIR COMPRESSOR IN A SAFE LOCATION OUT OF REACH OF CHILDREN AND ANYONE UNFAMILIAR WITH ITS PROPER USE OR CARE.

THE AIR COMPRESSOR MAY BECOME HOT DURING USE. PLEASE USE CAUTION WHEN TOUCHING THE AIR COMPRESSOR IN ORDER TO AVOID BURNS. USE THE AIR COMPRESSOR'S CARRY HANDLE WHEN HANDLING AND ALLOW THE UNIT TO COOL BEFORE STORING.

WARNING: THIS PRODUCT CAN EXPOSE YOU TO CHEMICALS INCLUDING LEAD, WHICH IS KNOWN TO THE STATE OF CALIFORNIA TO CAUSE CANCER AND BIRTH DEFECTS OR OTHER REPRODUCTIVE HARM. FOR MORE INFORMATION GO TO WWW.P65WARNINGS.CA.GOV.

1.1 Risk of Electrical Shock



- OPERATE AIR COMPRESSOR ONLY WITH A PROPERLY GROUNDED OUTLET WHICH PROVIDES CORRECT VOLTAGE (110 VOLT AC) AND ADEQUATE FUSE PROTECTION.
- DISCONNECT AFTER USE.
- DO NOT EXPOSE AIR COMPRESSOR TO RAIN OR OPERATE IN A WET AREA.
- CHECK POWER CORDS FOR SIGNS OF WEAR AND TEAR, CRUSHING OR HEAT DAMAGE. REPLACE FAULTY ITEMS BEFORE USE.
- NEVER OPERATE AIR COMPRESSOR WITH THE SHELL REMOVED.
- ALWAYS DISCONNECT AIR COMPRESSOR FROM ELECTRICAL SUPPLY CIRCUIT BEFORE SERVICING. ANY WIRING OR ELECTRIC REPAIRS DONE ON THIS AIR COMPRESSOR SHOULD BE DONE ONLY BY AUTHORIZED SERVICE PERSONNEL IN ACCORDANCE WITH NATIONAL AND LOCAL CODES.

1.2 Risk of Explosion or Fire



- ALWAYS OPERATE AIR COMPRESSOR IN A WELL VENTILATED AREA FREE OF FLAMMABLE VAPORS, COMBUSTIBLE DUST, GASES OR OTHER COMBUSTIBLE MATERIALS.
- DO NOT EXCEED 194°F (90°C).
- NEVER LEAVE THE AIR COMPRESSOR UNATTENDED WHILE OPERATING.
- NEVER PLACE OBJECTS AGAINST OR ON TOP OF AIR COMPRESSOR.
- OPERATE AIR COMPRESSOR 12 INCHES AWAY FROM ANY WALL OR OBSTRUCTIONS THAT WOULD RESTRICT PROPER VENTILATION.
- NEVER OVERRIDE OR DISABLE THE AIR COMPRESSOR'S TEMPERATURE PROTECTION CUTOFF FEATURE.
- ALWAYS ALLOW THE UNIT TO COOL BEFORE STORING.

1.3 Risk of Inhalation



- AIR FROM THE AIR COMPRESSOR MAY CONTAIN TOXIC VAPORS OR SOLID PARTICLES.
- NEVER INHALE AIR FROM THE AIR COMPRESSOR EITHER DIRECTLY OR FROM A BREATHING DEVICE CONNECTED TO THE AIR COMPRESSOR.
- DO NOT USE THIS AIR COMPRESSOR TO FILL A SCUBA TANK TO BE USED FOR SCUBA DIVING. THE AIR FROM THIS AIR COMPRESSOR IS NOT BREATHABLE.

1.4 Risk of Flying Objects



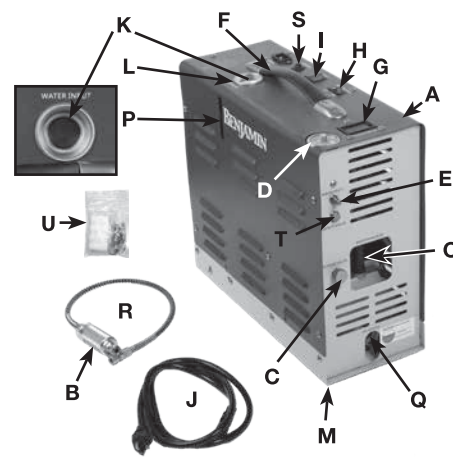
- ALWAYS WEAR EYE PROTECTION TO SHIELD THE EYES FROM FLYING DEBRIS.
- NEVER LEAVE PRESSURIZED AIR IN AIR COMPRESSOR. SHUT OFF AIR COMPRESSOR AND RELIEVE PRESSURE WHEN STORING OR ATTEMPTING MAINTENANCE.
- AVOID HOSE WHIP BY BLEEDING HOSE FIRST BEFORE DISCONNECTING HOSE FROM AIR COMPRESSOR.
- DO NOT MOVE THE AIR COMPRESSOR WHILE ANY PCP AIRGUNS, AIRGUN/PAINTBALL CYLINDER, OR AIR TANK IS UNDER PRESSURE.
- DO NOT ATTEMPT TO MOVE THE AIR COMPRESSOR OR ANY AIRGUN, CYLINDER, OR TANK ATTACHED TO IT BY PULLING ON THE FILL HOSE.

1.5 Temperature Protection Cutoff Feature

- To prevent the air compressor from overheating, the air compressor is equipped with an automatic Temperature Protection cutoff feature that will automatically shut off the air compressor if its internal temperature reaches 194°F (90°C).
- NOTE:** If the air compressor does not automatically shut off when its temperature reaches 190°F, manually shut off the air compressor and contact customer service before using again.
- If the protection circuit activates, safely and immediately disconnect the unit from the power source and allow it to cool. It may take up to 15 minutes or more depending on the environmental conditions at your location for the air compressor to sufficiently cool down.
 - Push in the breaker button to reset the air compressor when the temperature returns to a safe operating level.

2. LEARNING THE PARTS OF YOUR AIR COMPRESSOR

Learning the names of the parts of your air compressor will help you understand your owner's manual.



- A. Air Compressor
- B. Hose Filter
- C. Release Valve (Bleed Screw)
- D. Pressure Gauge
- E. Quick Connect Foster Fitting
- F. Carrying Handle
- G. Temp Indicator
- H. Air Compressor Power Switch
- I. Cooling System Switch
- J. Power Cord
- K. Rubber Plug
- L. Water Tank
- M. Exhaust Port
- N. Temporary Sealing Plug (See Fig. 2A)
- O. Black Oil Breather Tube
- P. Water Level Indicator Window
- Q. Oil Level Indicator Window
- R. Fill Hose
- S. Breaker Button
- T. Burst Disc (Safety Valve)
- U. Spare Parts

3. ASSEMBLY INSTRUCTIONS

1. Remove the temporary red sealing oil plug from the air compressor motor located on the front of the air compressor (Fig. 2A).

2. Using a small funnel, pour in the air compressor oil (Fig. 2B).

NOTE: Use either Air Compressor oil or 5W-40 motor oil.

3. Fill the air compressor until it reaches the appropriate oil level (Fig. 10).

- The oil level should be in between the middle and the top of the RED dot located in the center of the Oil Level Indicator Window.

- DO NOT OVER FILL

4. Screw in the black oil breather tube into the motor casing (Fig. 2C).

5. Locate the male foster fitting on the air compressor (Fig. 3A).

6. Connect the fill hose to the air compressor using the quick connector (Fig. 3B).

7. Connect the power cord to the air compressor and follow the operating instructions below in Section 4.

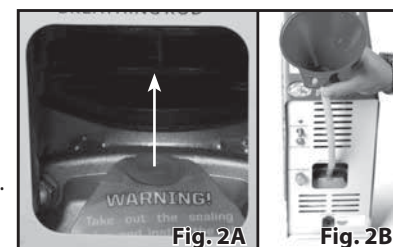


Fig. 2A

Fig. 2B

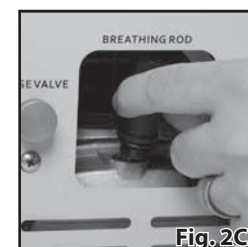


Fig. 2C

4. OPERATING INSTRUCTIONS

IMPORTANT: To protect the air compressor's fuse and to avoid hose whip, ALWAYS use the Release Valve (Bleed Screw) to release (bleed off) the air in the Air Compressor/ Fill hose after every use of the air compressor.

4.1 Important Features of the Air Compressor

A. Automatic Pressure Shut Off Feature

- The air compressor is equipped with an automatic pressure cutoff feature that will shut off the air compressor when the air compressor reaches the set desired pressure.
- Rotate the knob on the pressure gauge to the desired pressure setting (Fig. 5). To increase the pressure setting, rotate the knob clockwise. To decrease the pressure setting, rotate the knob counter clockwise.

NOTE: To test the pressure setting feature, use the foster fitting plug provided in your spare parts bag and connect it to the end of the fill hose (Fig. 4).

IMPORTANT: If the air compressor does not shut off when the air compressor reaches the set desired pressure, manually shut off the air compressor and contact customer service before using again.

B. Automatic Timer Cutoff Feature

NOTE: The air compressor is also equipped with an automatic timer cutoff feature that will shut off the air compressor after 40 minutes of continuous operation. If filling a large tank from zero pressure, you will likely be required to restart the air compressor. Let the air compressor cool for at least twenty minutes before you restart the air compressor.

IMPORTANT: If the air compressor does not shut off after 40 minutes of continuous operation, manually shut off the air compressor and contact customer service before using again.

C. Water Tank

IMPORTANT: Water freezes at about 32°F (0°C). DO NOT leave or store your air compressor in places, such as the garage or an outside shed, where the temperature can drop below freezing. This can cause the water to freeze and could damage some of the components of the compressor.

1. Remove the rubber plug from the water tank.
2. Fill the tank with water. Distilled water is recommended.
3. Replace the rubber plug. Before using and/or storing the compressor, inspect its cotton filter in the Hose Filter (See Section 5).

NOTE: When you first start the air compressor the water pump will start circulating the water and filling up the water lines. This will cause the water level to lower. Top off the water tank and make sure it is at least 80% or higher during operation.

4. Monitor water level during operation of compress.

4.2 Basic Operation

1. Place the air compressor on the ground or floor near a 110 Volt outlet.
2. Set the desired maximum fill pressure.
3. Plug the air compressor into a 110 Volt outlet.
4. Connect your airgun/reservoir cylinder or tank to the fill hose. Pull hose to ensure it is secured and make sure the release valve is hand tighten.

NOTE: You can use the male to male foster connecting adapter to attach your tank to the fill hose or connect directly to the air compressor using the tanks fill hose (Fig. 6).

5. Turn on the Cooling system by pressing down on the "—" symbol on the COOLING switch (Fig. 7).

NOTE: This will power up the cooling fan and water pump.

6. Turn on the air compressor by pressing down on the "O" symbol on the air compressor switch (Fig. 8).

7. Top of the Water Tank as needed to maintain at least an 80% water level during operation.

8. Monitor the air compressor and airgun, air cylinder, or tank you are filling. DO NOT leave the air compressor and airgun, air cylinder, or tank being filled unattended.

9. The air compressor will automatically shut off after the set desired maximum fill pressure is reached. However, it can be manually stopped by pressing the "O" symbol on the air compressor switch. NEVER fill your airgun, air cylinder, or tank beyond the maximum fill pressure at room temperature.

10. Loosen the release valve (bleed screw) to release all of the air in the fill hose to avoid hose whip from pressure in the fill hose (Fig. 9).

NOTE: The air pressure is released underneath the air compressor through the exhaust port. If the air compressor has been running for long periods of time, some moisture may have been built up and some amounts of water may be discharged through the exhaust port underneath.

11. Disconnect the compressor's fill hose from the fill nipple on the airgun, air cylinder, or tank.

12. Turn off the cooling system and unplug the compressor.



Fig. 7

Fig. 8

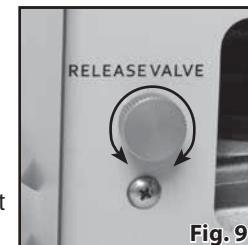


Fig. 9

5. MAINTAINING YOUR AIR COMPRESSOR

- Check oil and water levels prior to each use.

5.1 Water Tank

IMPORTANT: Water freezes at about 32°F (0°C). DO NOT leave or store your air compressor in places, such as the garage or an outside shed, where the temperature can drop below freezing. This can cause the water to freeze and could damage some of the components of the compressor.

1. Top off the water tank and make sure it is at least 80% or higher during operation.

5.2 Oil Change

It is recommended that you change the oil for the first time after the earlier of one (1) month or 25 hours of use. After the first oil change it is recommended that you should change the oil the earlier of every three (3) months or 50 hours of use.

1. Raise the rear of the compressor to tilt it forward.
2. Locate the drain screw below the oil level window indicator (Fig. 10).
3. Remove the drain screw to drain the oil. Properly dispose of the used oil in accordance with your location's environmental laws and regulations.
4. Replace and tighten the drain screw.
5. Remove the black oil breather tube and refill the motor with air compressor or SW-40 motor oil to the appropriate level.
 - The oil level should be in between the middle and the top of the RED dot located in the center of the Oil Level Indicator Window. DO NOT OVER FILL.
6. Reinstall the black oil breather tube.

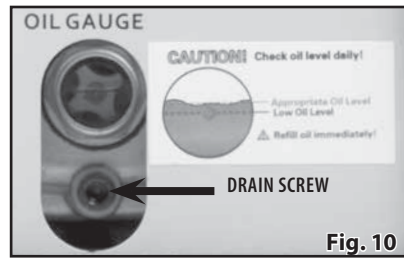


Fig. 10

5.3 Cotton Filters

a. Hose w/ In-line Air Filter

It is recommended that you change the cotton air filter if they become deformed or extremely dirty (filters sold separately).

IMPORTANT: Before using and/or storing the compressor, inspect its cotton filter in the Hose Filter as follows:

1. Remove the hose from the compressor.
2. Unscrew the Hose Filter and remove the cotton air filter.
3. Squeeze the cotton filter dry to remove excessive amount of moisture.
4. Replace cotton filter if it becomes deformed or extremely dirty (filter sold separately).

b. Main Output Air Filter:

It is recommended that you change the cotton air filter of the main separator body after the earlier of three (3) months or 50 hours of use (filters sold separately).

The output air filters is located inside the air compressor and under the pressure gauge. This will require you to remove the outer shell in order to change the filters.

1. Unplug the air compressor and remove the power cord.
2. Using a Phillips head screwdriver, remove only the screws from the top shell of the compressor.
3. Using the carrying handle, lift the main outer shell straight up and set to the side.
4. Use a wrench to remove the hexagon shaped adapter and gauge from the separator main body (Fig. 11).
5. Remove the one (1) cotton air filter and replace with new cotton air filter.
6. Reinstall the hexagon shaped adapter and gauge to the separator main body.
7. Reinstall the main top shell of the compressor.

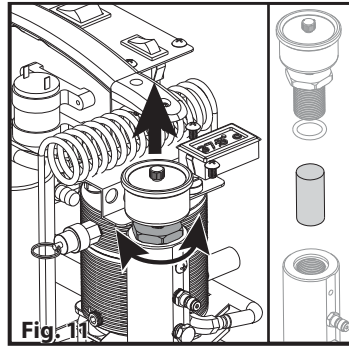


Fig. 11

- Use only a dampened cloth to clean exterior of compressor.
- Do not use any detergent or solvents which might contain chemicals that could damage plastic components and/or painted surfaces of the compressor.
- All other services should be performed by an Authorized Service Personnel.

6. TROUBLESHOOTING

A. Issue – Air Compressor will not start

1. **Resolution** – Check to make sure the air compressor is plugged into an active electrical outlet.
2. **Resolution** – Check the breaker button on the compressor, push in to reset.



Fig. 12

B. Issue – Air Compressor is not building pressure

1. **Resolution** – Make sure release valve is closed. It should be hand tightened. If release valve is closed and the air compressor is still not building pressure, turn off air compressor and contact Customer Service.

C. Issue – Air Compressor shuts off before reaching desired pressure

1. **Resolution** – Make sure the Output Pressure (Auto Shut Off) is set properly.
2. **Resolution** – If the air compressor has been running continuously for 40 minutes, simply restart the air compressor by turning off and then on again to continue filling.

NOTE: The air compressor is equipped with an automatic timer cutoff feature that will automatically shut off the air compressor after 40 minutes of continuous operation. If filling a large tank from zero pressure, it will require you to restart your compressor. Let the air compressor cool down for at least twenty minutes before you restart the compressor.

D. Issue – Burst Disc Failure

1. **Resolution** – Should the Burst Disc (Safety Valve) fail during use of the compressor, shut off the compressor and then close the valve of the device you are filling. Open the Release Valve (Bleed Screw) to vent the remaining air from the compressor. Remove the Burst Disc retention screw (Fig. 12) to verify the Burst Disc has failed (there will be a hole in it). Remove the failed Burst Disc from the compressor. Additional Burst Discs are in the bag of spare parts that comes with the compressor. Install a new Burst Disc and re-insert the Burst Disc retention screw by turning it clockwise.

E. Issue – Air Compressor Overheats

1. **Resolution** – Make sure the Water Tank is filled with water. If it is not filled at least 80% full, top off the water. Let the air compressor cool for at least 15 minutes prior to restarting the compressor.

In the unlikely event that your air compressor malfunctions, DO NOT ATTEMPT TO FIX THE PROBLEM YOURSELF. Please contact Customer Service.

SPECIFICATIONS

Working Voltage	110V–120V/60Hz
Motor Power	2000W
Temperature Protection	194°F (90°C)
Working Pressure	Up to 4,500 PSI
Weight	48.5 lbs
Application Range	Airgun/Paintball Cylinders or tanks less than 6.8L

LIMITED ONE YEAR WARRANTY

This product is warranted to be free of defects in materials and workmanship for 1 year. Buyer should retain the original sales receipt as record of date of purchase. This warranty does not cover adaptors, filters, attachments or other accessories. In the event of a defect under this warranty, Crosman will, at its option, repair or replace the product; provided, however, its inspection indicates that an original defect exists. Crosman reserves the right to replace any product which is no longer available with a product of comparable value and function. If Crosman determines the repair is not covered under the warranty guidelines, there could be a charge to you for the repair.

WHAT IS COVERED

1. Parts and Repair of any factory defect of material or workmanship.
2. Transportation charges to consumer for the repaired product and/or replacement product.

WHAT IS NOT COVERED

1. Transportation charges to the Authorized Service Personnel for defective product.
2. Normal wear and tear from regular use.
3. Damaged parts as a result from misuse, neglect or tampering.
4. Damage caused by abuse, modification or failure to perform normal maintenance – see Owner's Manual.
5. Improper installation or maintenance performed by someone other than an Authorized service personnel.
6. Any other expense.

THIS LIMITED WARRANTY DOES NOT INCLUDE CONSEQUENTIAL DAMAGES, INCIDENTAL DAMAGES OR INCIDENTAL EXPENSES, INCLUDING DAMAGE TO PROPERTY OR ANY OTHER EXPENSE. CROSMAN DISCLAIMS ANY IMPLIED WARRANTIES, INCLUDING THE IMPLIED WARRANTIES OF MERCHANTABILITY AND FITNESS. SOME STATES DO NOT ALLOW THE EXCLUSION OR LIMITATION OF INCIDENTAL OR CONSEQUENTIAL DAMAGES, OR ALLOW LIMITATIONS ON IMPLIED WARRANTIES SO THE ABOVE LIMITATIONS OR EXCLUSIONS MAY NOT APPLY TO YOU. TO THE EXTENT ANY PROVISION OF THIS WARRANTY IS PROHIBITED BY FEDERAL, STATE OR MUNICIPAL LAW, IT SHALL NOT BE APPLICABLE. THIS WARRANTY GIVES YOU SPECIFIC LEGAL RIGHTS, AND YOU MAY ALSO HAVE OTHER RIGHTS, WHICH VARY FROM STATE TO STATE AND COUNTRY TO COUNTRY.

STOP – BEFORE YOU RETURN THIS PRODUCT TO THE STORE

Save on gas and avoid the trip back to the store. Contact our Customer Service/Technical Support representatives for information and trouble-shooting help. Call 1-800-7AIRGUN (1-800-724-7486) or find answers to frequently asked questions at www.crosman.com.

WARRANTY CLAIM AND REPAIR SERVICE

If your air compressor needs repair - DO NOT ATTEMPT TO DISASSEMBLE IT! Your air compressor requires special tools and fixtures to repair it. Any disassembly or modification not performed by Authorized Service Personnel will void the warranty.

U.S. Customers - Contact Crosman Customer Service at 800-724-7486 or e-mail us via www.crosman.com. You will be instructed where and how to send your air compressor in for repair under warranty.

Crosman Corporation
Attn: Warranty Dept.
7629 Route 5 & 20
Bloomfield, NY 14469

Include with your product a copy of your receipt and a brief description of the problem. Be sure to indicate your name, mailing address, e-mail address and telephone number. We recommend you use a method of shipping that provides you with a tracking number and insurance options. Crosman is not liable for any damaged, lost or stolen merchandise during shipping.

Canadian Customers - Contact the Gravel Agency, in Quebec at 866-662-4869.

Crosman and Benjamin are trademarks of Crosman Corporation.
© 2019 Crosman Corporation
02-19 OM