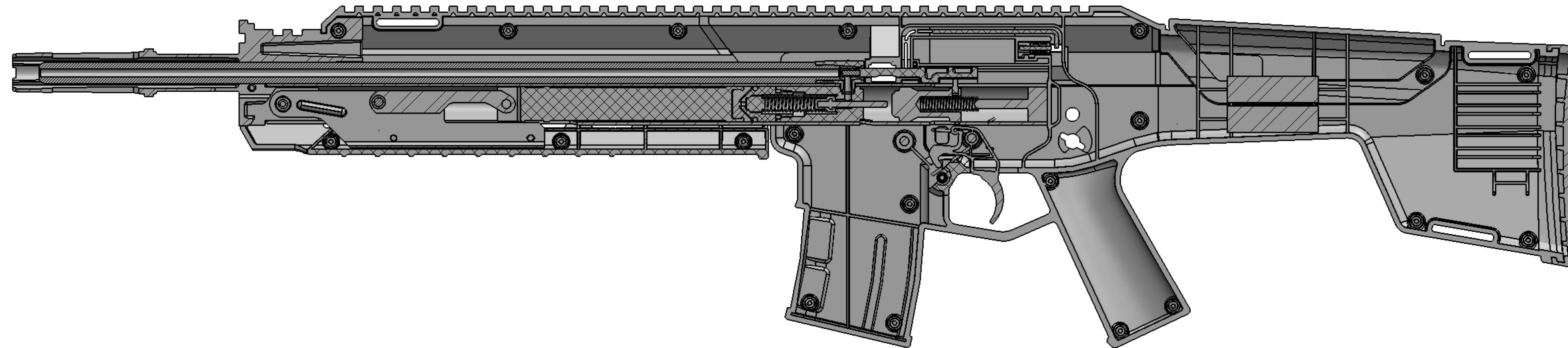
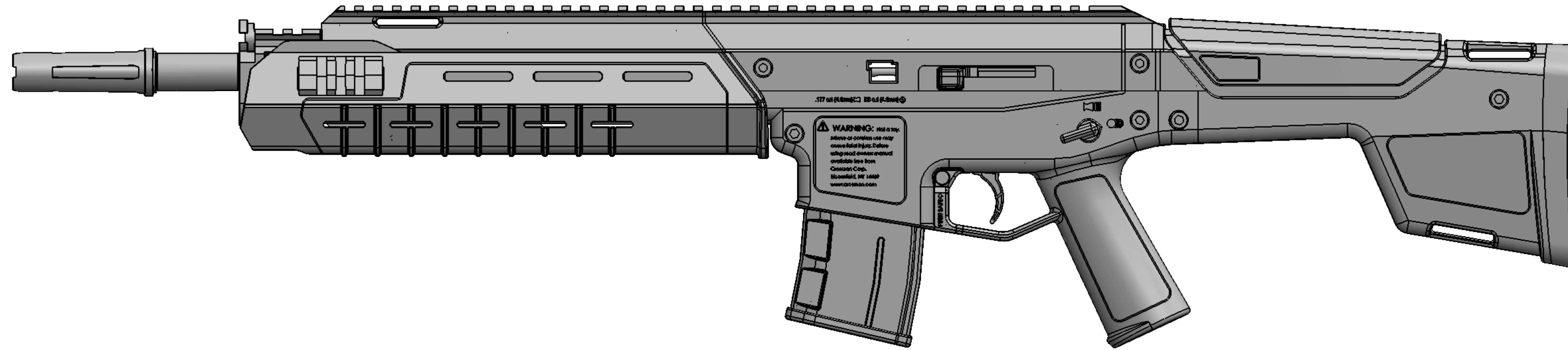
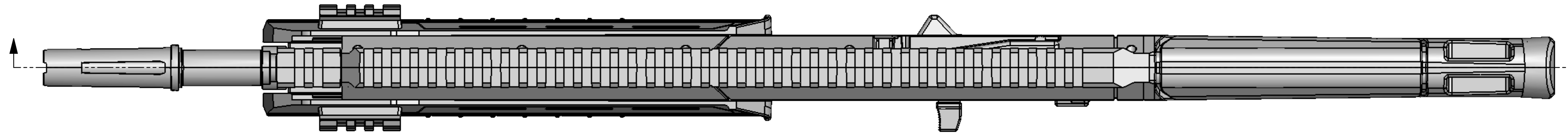


ECN	REV.	REVISIONS DESCRIPTION	DATE	BY
10956	A	RELEASE	1/28/2013	EAS
11075	B	417A009 WAS 417-009	3/27/2013	EAS
11153	C	REMOVE 7608087 AND 417-035; ADD MK177-022	5/7/2013	EAS
12890	D	REPLACED MK177-022 WITH MK177A022	11/29/2016	CJH

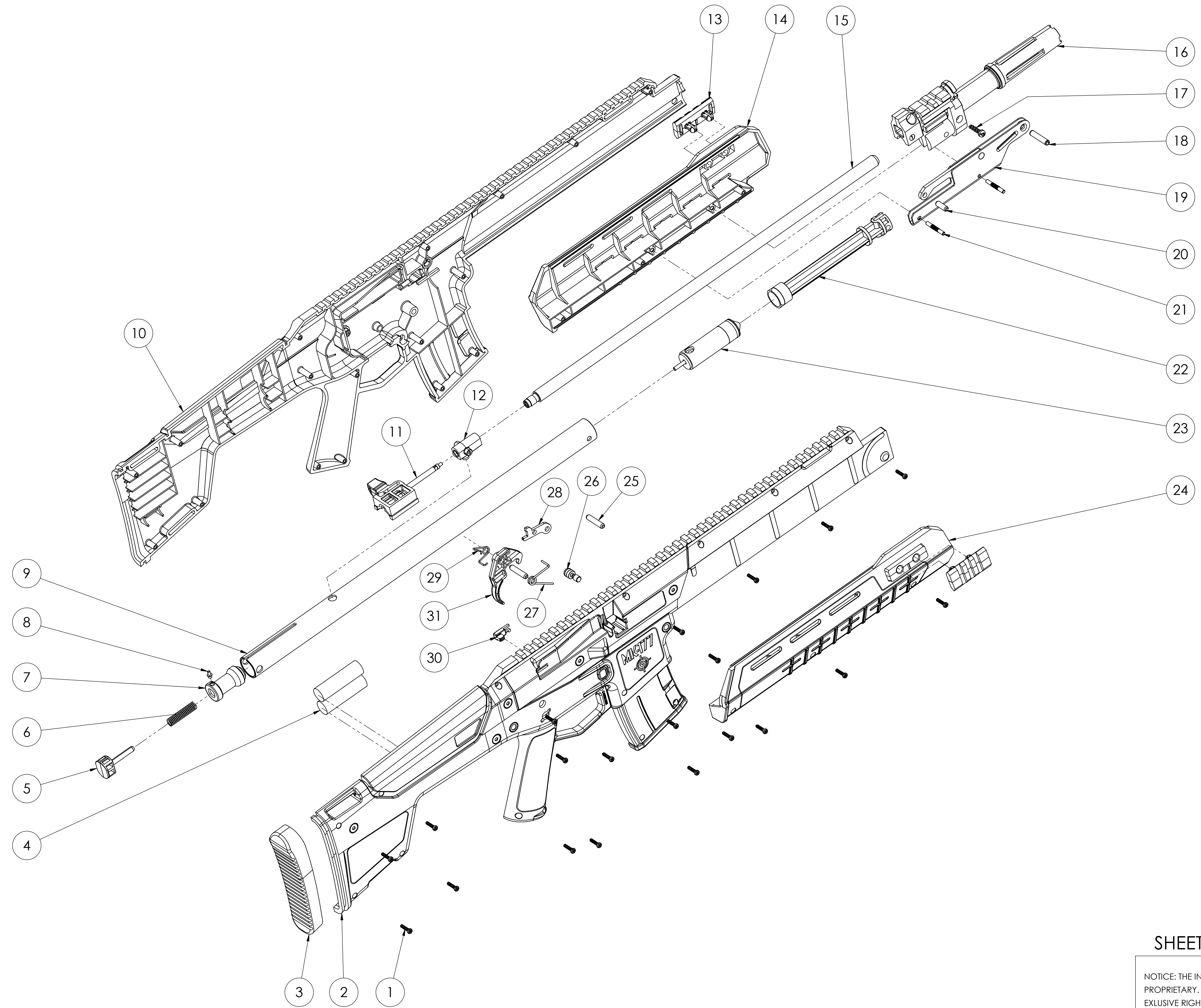


.177 in (4.478mm) BB and 6.8mm  
**WARNING:** This air rifle  
 should be used only in a safe  
 area. Do not use in public  
 places or near people. Always  
 use proper gun safety practices.  
 Available from  
 Crosman Corp.  
 Bloomfield, NY 14416  
 www.crosman.com

1 MATERIAL: PER BOM ON SHEET 2 OF 2  
 NOTES: UNLESS OTHERWISE SPECIFIED

NOTICE: THE INFORMATION SHOWN HEREON IS PROPRIETARY. CROSMAN CORPORATION CLAIMS EXCLUSIVE RIGHT OF USE. REPRODUCTION OR DISTRIBUTION WITHOUT WRITTEN APPROVAL BY CROSMAN CORPORATION IS STRICTLY PROHIBITED.		UNLESS OTHERWISE SPECIFIED DIMENSION ARE IN INCHES .XX +/- .01 .XXX +/- .005 ANGULAR +/- 1 Deg. SURFACE FINISH 63 RMS MAX DIM. & TOL. PER ASME Y14.5M-1994		Crosman Corporation ROUTES 5 & 20 E. BLOOMFIELD, NY 14469	
DRAWN BY EAS DATE 1/28/2013	PART NAME GENERAL ASSY, BLACK	DWG. NO. MK177-999	REV D		
SIZE D	SCALE --				

REVISIONS				
ECN	REV	DESCRIPTION	DATE	BY
-	-	See Sheet1	-	-



ITEM NO.	PART NUMBER	DESCRIPTION	QTY.
1	1911-016	SCREW, HI-LO, 4-24 X .469	20
2	MK177-002	FRAME, RH BLACK	1
3	MK177-008	RECOIL PAD	1
4	R71-025	STOCK WEIGHT	2
5	MK177-013	PLUG, TUBE	1
6	MK177-019	SPRING, HAMMER	1
7	MK177-015	HAMMER	1
8	760D079	PIN HAMMER	1
9	MK177-014	PUMP TUBE	1
10	MK177-001	FRAME, LH BLACK	1
11	MK177-011	BOLT ASSEMBLY, OVERMOLDED	1
12	MK177-012	BARREL SUPPORT	1
13	MK177-003	TACTICAL RAIL	2
14	MK177-004	FOREARM, LH BLACK	1
15	MK177-010	BARREL	1
16	MK177-007	FLASH SUPPRESSOR	1
17	417-036	SCREW, HI-LO, 8-18 X .625	1
18	397-002	PIN, MUZZLE CAP	1
19	760D043	ASSY LEVER-LINK	1
20	101-033	PIN, PLUNGER GUIDE	1
21	MK177-006	PIN, LEVER	2
22	MK177-103	PUMP ROD ASSY	1
23	MK177-101	VALVE ASSY	1
24	MK177-005	FOREARM, RH BLACK	1
25	760-016	PIN TRIGGER PIVOT	2
26	760A017	SAFETY	1
27	761B005	SPRING TRIGGER	1
28	760A084	SEAR	1
29	MK177A022	SPRING, TRIGGER RETURN	1
30	417A009	BB LATCH	1
31	MK177-009	TRIGGER	1

SHEET 2 OF 2

NOTICE: THE INFORMATION SHOWN HEREON IS PROPRIETARY. CROSMAN CORPORATION CLAIMS EXCLUSIVE RIGHT OF USE. REPRODUCTION OR DISTRIBUTION WITHOUT WRITTEN APPROVAL BY CROSMAN CORPORATION IS STRICTLY PROHIBITED.

UNLESS OTHERWISE SPECIFIED  
DIMENSION ARE IN INCHES  
XX +/- .01  
.XXX +/- .005  
ANGULAR +/- 1 Deg  
SURFACE FINISH 63 RMS MAX  
DIM. & TOL. PER ASME Y14.5M-1994

**Crosman Corporation**  
ROUTES 5 & 20  
E. BLOOMFIELD, NY 14469

DRAWN BY EAS	PART NAME	GENERAL ASSY, BLACK	REV D
DATE 1/28/2013	DWG. NO.	MK177-999	
SIZE D	SCALE --		

NOTES: UNLESS OTHERWISE SPECIFIED