



EXPLODED VIEW & PARTS LIST

MODELS P1377

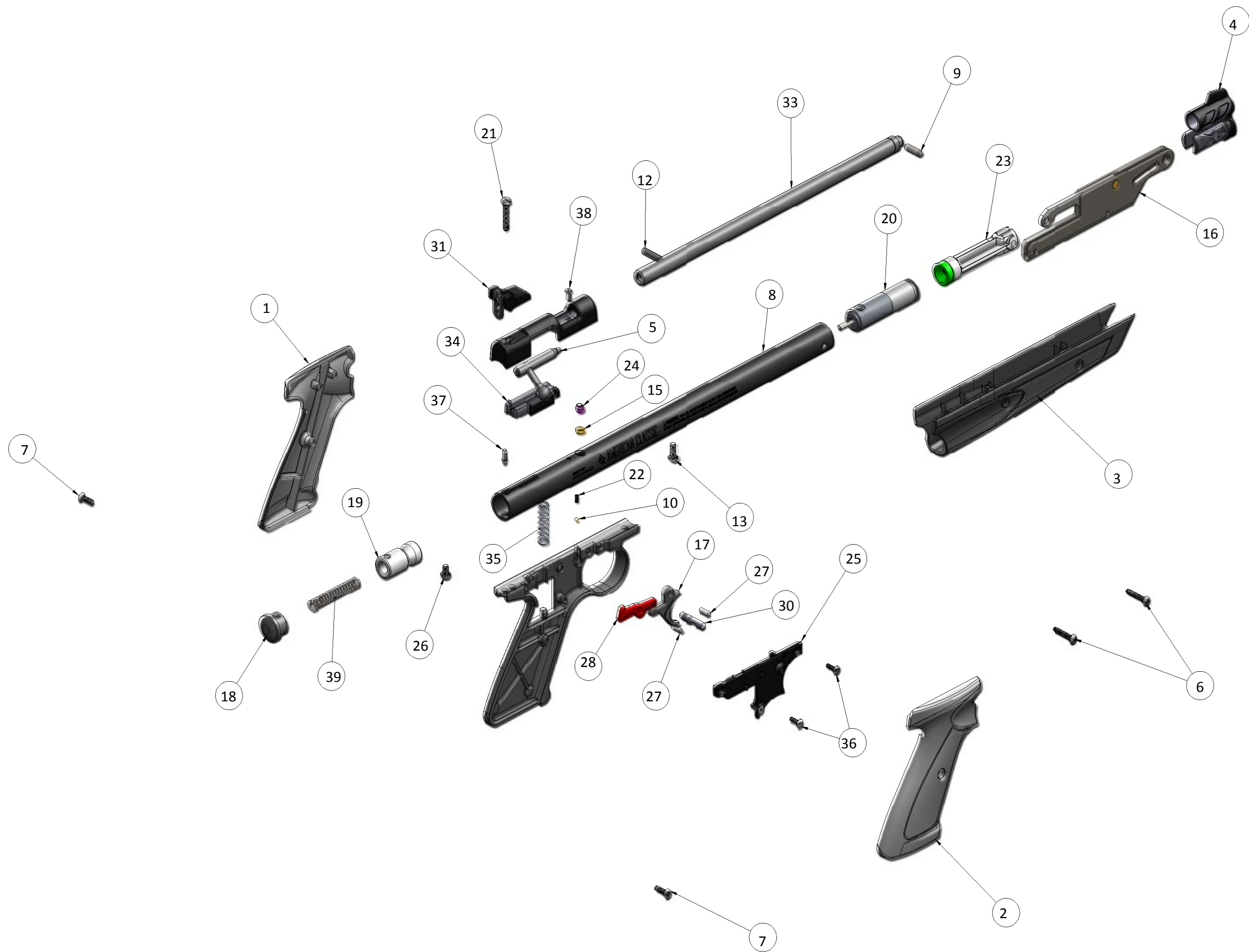


Manufacture Start Dates: 2/25/15

Last Update 2/25/15

CROSMAN CORPORATION
7629 ROUTES 5 & 20
BLOOMFIELD, NY 14469
Phone: 1-800-724-7486
Parts Order Fax: 585-657-5405
www.crosman.com

- This EVP and parts list is intended to be an informational guide in ordering parts. It is not instructional material and we therefore assume no responsibility for those who use the same without proper factory training.
- Please order by part number and description.
- Check or money order for the total price must accompany the order.
- For current prices contact Crosman Corporation at 1-800-724-7486 or visit our website www.crosman.com



| ITEM NO. | PART NUMBER | DESCRIPTION | P1377-999 -Black .177 Caliber/QTY. | Revised Date |
|----------|-------------|---|---------------------------------------|--------------|
| 1 | P1377-001 | L.H. Grip, Black | 1 | |
| 2 | P1377-002 | R.H. Grip, Black | 1 | |
| 3 | P1377-003 | Forearm, Black | 1 | |
| 4 | P1377-004 | Front Sight | 1 | |
| 5 | P1377-005 | BOLT ASSY, .177 CALIBER | 1 | |
| 6 | P1377-009 | Forearm Screw, #6-32 x .750, PPH TYPE F | 2 | |
| 7 | P1377-010 | Grip Screw | 2 | |
| 8 | P1377-011 | Pump Tube, .177 Caliber | 1 | |
| 9 | 101-033 | PIN, PLUNGER GUIDE | 1 | |
| 10 | 105-039 | DIA .093 STEEL BALL | 1 | |
| 11 | 111A067 | WASHER, SPRING | 1 | |
| 12 | 130-030 | Pivot Pin | 1 | |
| 13 | 130B031 | SCREW, 8-32 x .437 | 1 | |
| 14 | 130-035 | O-RING, 2-111 | 1 | |
| 15 | 130-036 | BREECH GASKET | 1 | |
| 16 | 760KB-100 | ASSY LEVER-LINK | 1 | |
| 17 | 1300-017 | TRIGGER, BLACK | 1 | |
| 18 | 1322B002 | Tube Plug | 1 | |
| 19 | 1322C005 | STRIKER | 1 | |
| 20 | 1322C013 | ASSEMBLY, EXHAUST VALVE | 1 | |
| 21 | 1322-015 | SCREW, 8-32 x .843 | 1 | |
| 22 | 1322-017 | SPRING, SAFETY | 1 | |
| 23 | 760KB-150 | PUMP ROD ASSY | 1 | |
| 24 | 1322A026 | SLEEVE | 1 | |
| 25 | 1322B044 | COVER | 1 | |
| 26 | 1322A029 | SCREW, 8-32 x 271, RND HD | 1 | |
| 27 | 1322-045 | PIN, .125 x .390 | 2 | |
| 28 | 1322A048 | SEAR | 1 | |
| 29 | 1322B051 | FRAME, TRIGGER | 1 | |
| 30 | 1322-052 | SAFETY | 1 | |
| 31 | 1322A059 | REAR SIGHT ASSY | 1 | |
| 32 | 1377-074 | BREECH | 1 | |
| 33 | 1377-075 | BARREL, .177 CAL | 1 | |
| 34 | 1377-077 | BASE | 1 | |
| 35 | 1377-080 | SPRING, VALVE | 1 | |
| 36 | 1763-056 | SCREW, 4-40 x .375, FHCS | 3 | |
| 37 | 2100A011 | HAMMER PIN | 1 | |
| 38 | 1322B027 | SCREW, 4-48 x250 | 1 | |
| 39 | 781B051 | Main Spring | 1 | |