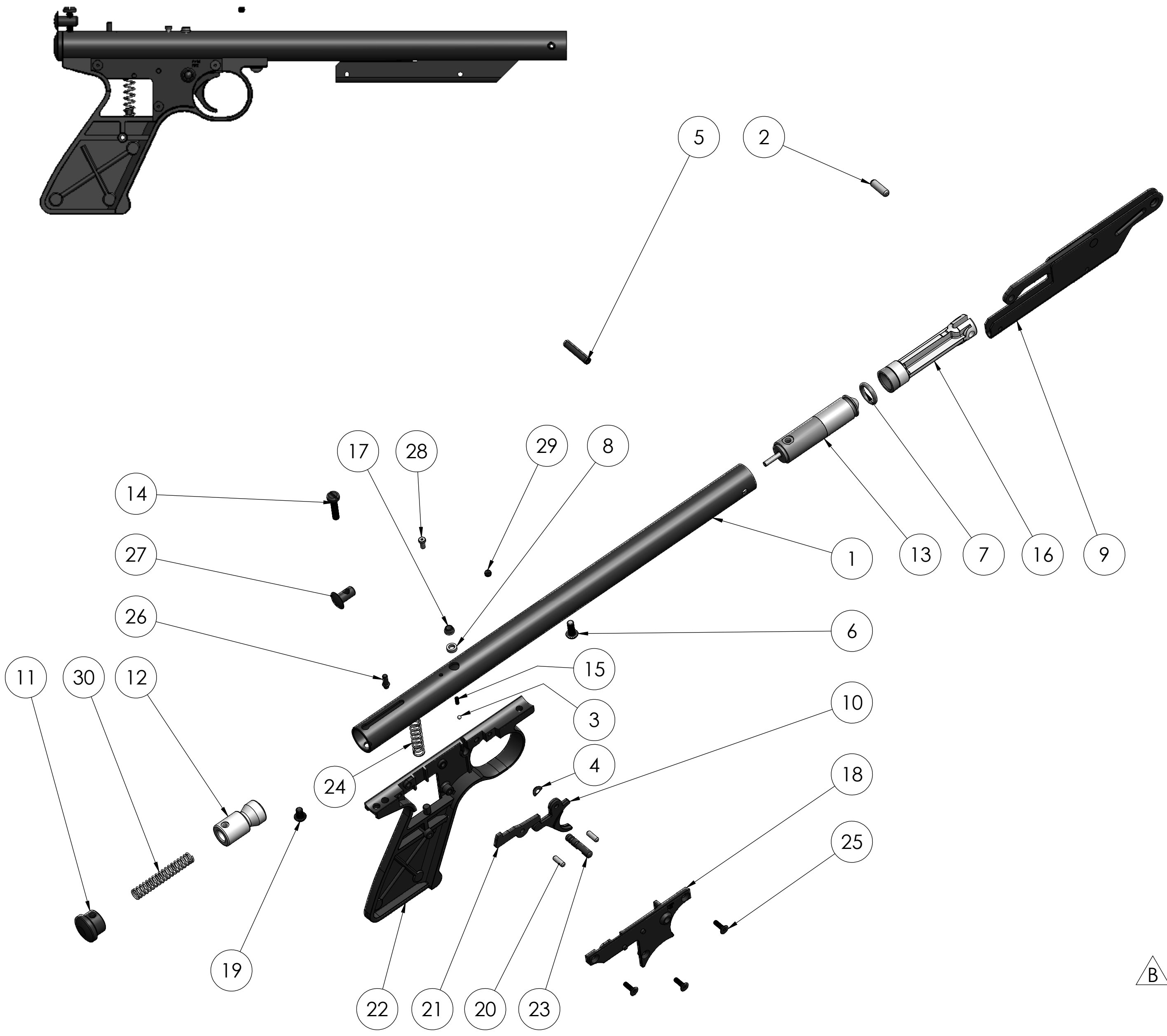


REVISIONS				
ECN	REV	DESCRIPTION	DATE	BY
12317	A	RELEASE FOR PRODUCTION	06/10/15	MDW
12651	B	ADDED CUSTOM SHOP PACKAGING BOM	04/01/16	MDW



PARTS LIST			
ITEM NO.	PART NUMBER	DESCRIPTION	QTY.
1	P1300-013	TUBE, PUMP	1
2	101-033	PIN, PLUNGER GUIDE	1
3	105-039	DIA .093 STEEL BALL	1
4	111A067	WASHER, SPRING	1
5	130-030	Pivot Pin	1
6	130B031	SCREW, 8-32 x .437	1
7	130-035	O-RING, 2-111	1
8	130-036	BREECH GASKET	1
9	760KB-100	ASSY LEVER-LINK	1
10	1300-017	TRIGGER, BLACK	1
11	1322B002	Tube Plug	1
12	1322C005	STRIKER	1
13	1322C013P	ASSEMBLY, EXHAUST VALVE	1
14	AS2250-015	SCREW, 8-32 x .750	1
15	1322-017	SPRING, SAFETY	1
16	760KB-150	PUMP ROD ASS'Y	1
17	1322A026	SLEEVE	1
18	1322B044	COVER	1
19	1322A029	SCREW, 8-32 x 271, RND HD	1
20	1322-045	PIN, .125 x .390	2
21	1322A048	SEAR	1
22	1322B051	FRAME, TRIGGER	1
23	1322-052	SAFETY	1
24	1377-080	SPRING, SEAR	1
25	1763-056	SCREW, 4-40 x .375, FHCS	3
26	2100A011	HAMMER PIN	1
27	AS2250-020	BREECH PLUG	1
28	1322B027	SCREW, 4-48 x250	1
29	88-089	SET SCREW 8-32 x 125 CUP HEX HD	1
30	781B051	Main Spring	1

PACKAGING BOM (CUSTOM SHOP)			
ITEM NO.	PART NUMBER	DESCRIPTION	QTY.
40	2300KT-520	BOX	1
41	2300KT-523	FOAM	1
42	1300KT-500	ENVELOPE ASSEMBLY	1
43	2300KT-525	MASTER	1

- ② CUSTOM SHOP PACKAGING ONLY
- ① REFER TO THE ASSEMBLY PROCEDURES FOR ALL ASSEMBLY INSTRUCTIONS.

NOTES: UNLESS OTHERWISE SPECIFIED

NOTICE: THE INFORMATION SHOWN HEREON IS PROPRIETARY. CROSMAN CORPORATION CLAIMS EXCLUSIVE RIGHT OF USE. REPRODUCTION OR DISTRIBUTION WITHOUT WRITTEN APPROVAL BY CROSMAN CORPORATION IS STRICTLY PROHIBITED.

UNLESS OTHERWISE SPECIFIED
DIMENSION ARE IN INCHES
.XX +/- .01
.XXX +/- .005
ANGULAR +/- 1 Deg.
SURFACE FINISH 63 RMS MAX
DIM. & TOL. PER ASME Y14.5M-1994

Crosman Corporation
ROUTES 5 & 20
E. BLOOMFIELD, NY 14469

DRAWN BY MDW DATE 06/04/15	PART NAME BASE ASSEMBLY	DWG. NO. P1300-999	REV B
-------------------------------	----------------------------	-----------------------	----------