



EXPLODED VIEW & PARTS LIST

MODELS CCICE7B / CCICE7BKT

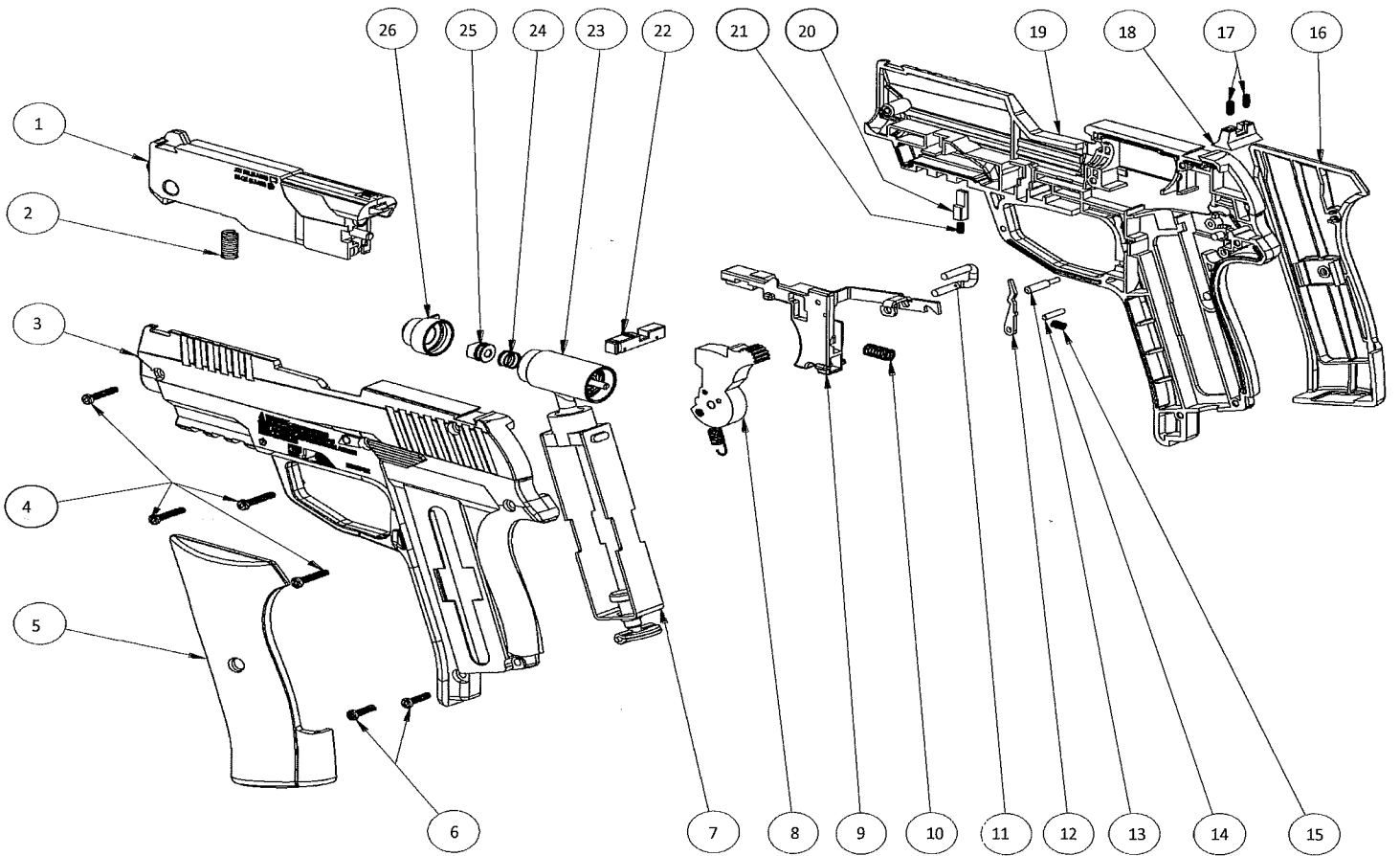


Manufacture Start Dates: 2/27/15

Last Update 2/27/15

CROSMAN CORPORATION
7629 ROUTES 5 & 20
BLOOMFIELD, NY 14469
Phone: 1-800-724-7486
Parts Order Fax: 585-657-5405
www.crosman.com

- This EVP and parts list is intended to be an informational guide in ordering parts. It is not instructional material and we therefore assume no responsibility for those who use the same without proper factory training.
- Please order by part number and description.
- Check or money order for the total price must accompany the order.
- For current prices contact Crosman Corporation at 1-800-724-7486 or visit our website www.crosman.com



ITEM NO.	PART NUMBER	DESCRIPTION	QTY.
1	ICM-100	SHROUD ASSEMBLY	1
2	106-021	Shroud Spring	1
3	ICM-001	FRAME LEFT	1
4	2-041	Screw, Frame (long)	4
5	ICM-101	GRIP ASSEMBLY LEFT	1
6	1911-016	SCREW, HI-LO, 4-24 X .469	2
7	ICM-103	Piercing Bracket Assembly	1
8	106-033	Hammer Assembly	1
9	106-032	TRIGGER ASSEMBLY	1
10	106-031	TRIGGER SPRING	1
11	106A034	SAFETY LINK	1
12	106-047	Sear	1
13	106-050	Pivot Pin	1
14	106-051	Sear Pivot Pin	1
15	106-049	Sear Spring	1
16	ICM-102	GRIP ASSEMBLY RIGHT	1
17	1088-010	SET SCREW, 4-40 x .25, HEX, CUP, BLK	2
18	1088A007	REAR SIGHT	1
19	ICM-002	FRAME RIGHT	1
20	106A045	Interlock	1
21	2210SB-048	SPRING, INTERLOCK	1
22	106A029	Safety	1
23	T4-106	VALVE ASSEMBLY	1
24	106A046	SPRING, DETENT	1
25	106B011	DETENT	1
26	106A010	DETENT BODY	1