



EXPLODED VIEW & PARTS LIST

MODEL 30060/30063 MTR77NP



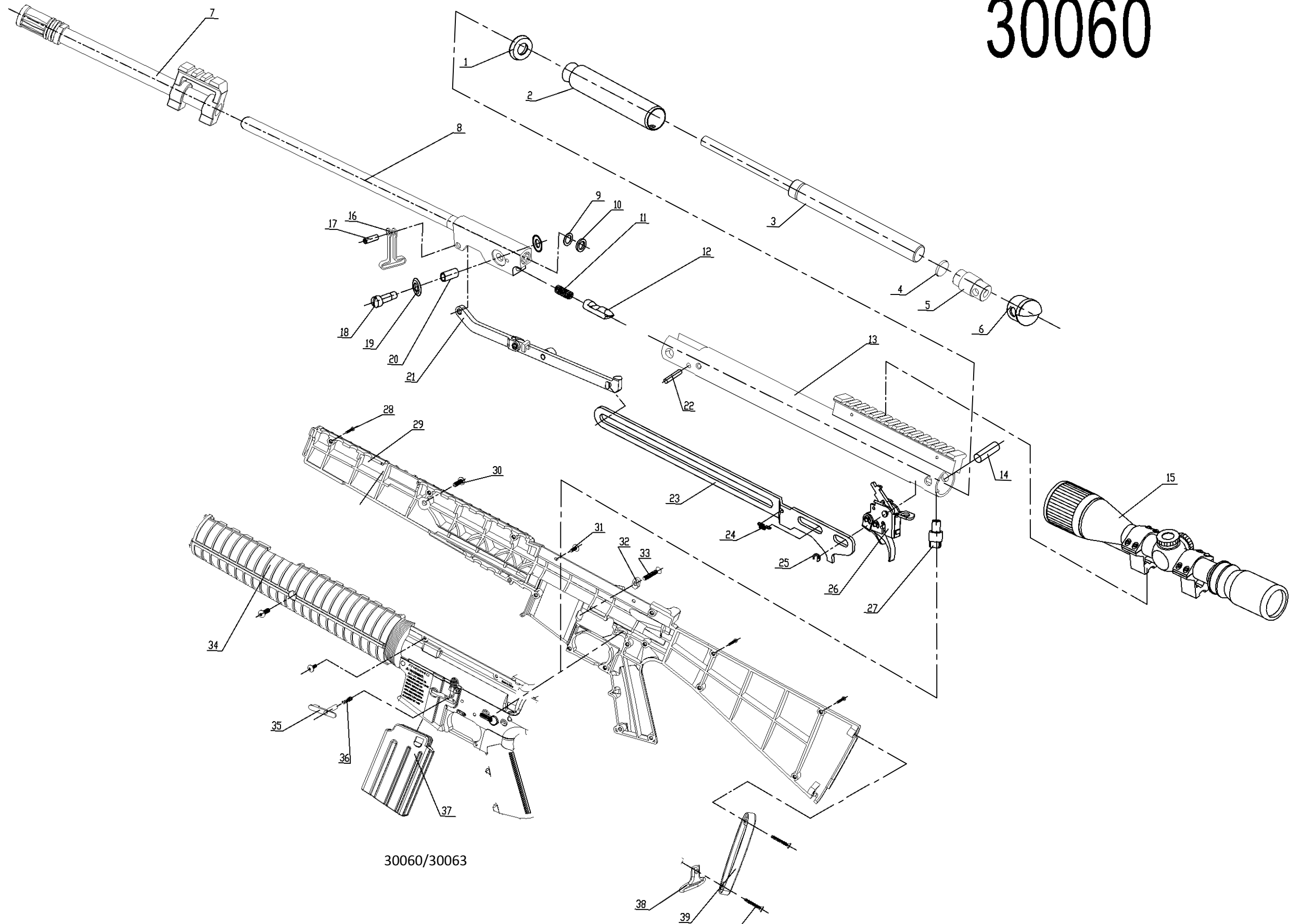
Manufacture Start Dates: 04/26/13

Last Update 10/15/13

CROSMAN CORPORATION
7629 ROUTES 5 & 20
BLOOMFIELD, NY 14469
Phone: 1-800-724-7486
Parts Order Fax: 585-657-5405
www.crosman.com

- This EVP and parts list is intended to be an informational guide in ordering parts. It is not instructional material and we therefore assume no responsibility for those who use the same without proper factory training.
- Please order by part number and description.
- Check or money order for the total price must accompany the order.
- For current prices contact Crosman Corporation at 1-800-724-7486 or visit our website www.crosman.com

30060



Item	BAM Part Number	Description	30060	Revisional
1	B18-04-1B	Piston Seal	1	10-15-13
2	BT9M22-03-100B	Piston	1	
3	BT9M22-00-5A	gas spring	1	10-15-13
4	BT9M22-00-7	Plain plate	1	
5	BT9M22-00-2	Back Spring Guide	1	
6	BT9M22-00-3	Tube Cover	1	
7	30060-003	Sleeve	1	10-15-13
8	30060-01-100	Barrel Assembly	1	
9	B22-00-1A	Adjust washer	0-2	
10	B12-00-14	Breach Seal	1	
11	B15-01-2A	Jam Spring	1	
12	BT9M22-01-5D	Alive Jam	1	10-15-13
13	30060-02-00	Compression Tube	1	
14	B18-00-7	Fixed Pin	1	
15	4X32 CenterPoint 3	Scope	1	
16	RW1K77X2-00-100	Slings mount	1	10-15-13
17	B12-00-1B	Link Pin	1	
18	B19-2-00-2A	Break Bolt	1	10-15-13
19	B18-00-15B	Washer	2	
20	B18-01-1C	Bushing	1	
21	BT9M22-04-00	Lever Assembly	1	
22	BT9M22-00-4	Dead Jam	1	
23	B18-00-5B	Bear Trap Lever	1	
24	B19-19-00-5	Safety Spring	1	
25	GB896-86 3	E-Ring	1	
26	B18-05-00	Trigger Pack Assembly	1	
27	B18-00-9	Stock link pin	1	
28	30060-1911-016	Tightening Screw Of Stock	16	
29	30060-001	Stock (right)	1	
30	GB/T70.2-2000 M5x14	Screw Of Stock	2	
31	GB/T973-1976 M3x8	Screw Of Scope Seat	4	
32	30060-008	Bushing Of Clip Pin	1	
33	GB/T 819.1-2000	Head Tapping Screw	1	
34	30060-002	Stock (left)	1	
35	30060-007	Clip Pin	1	
36	30060-009	Spring Of Clip Pin	1	
37	30060-150	Magazine Assembly	1	
38	30060-005	Slings mount	1	
39	30060-004	bottom	1	
40	GB/T 847-85	Cross Recessed	2	

- *Parts in BOLD are available for order. Other parts in the list may also be available.*