

BENJAMIN[®]

EXPLODED VIEW & PARTS LIST

Benjamin Discovery Dual Fuel Compressed Air / CO2 Air Rifle PART INFORMATION MODELS: BP1K77 and BP9M22



Manufacture Start Date: 01/14/08

Last Update 2/26/15

CROSMAN CORPORATION
7629 ROUTES 5 & 20
BLOOMFIELD, NY 14469
Phone: 1-800-724-7486
Parts Order Fax: 585-657-5405
www.crosman.com

- This EVP and parts list is intended to be an informational guide in ordering parts. It is not instructional material and we therefore assume no responsibility for those who use the same without proper factory training.
- Please order by part number and description.
- Check or money order for the total price must accompany the order.
- For current prices contact Crosman Corporation at 1-800-724-7486 or visit our website www.crosman.com

PARTS LIST

Manufacture Start Date: 01/14/08

PART NUMBER	DESCRIPTION	Qty	
1	1761-019	Breech	1
2	<i>See Unique</i>	Tube	-
3	262-020	Spring, Sear	1
4	1322-045	Pin, Dwl .125DIA .390	3
5	788A031	Safety, .312dia STL	1
6	1322-054	Screw, Cover	2
7	2260-011	Spring, Trigger	1
8	1322A048	Sear, STP Pistol	1
9	262A003	Link	1
10	262A004	Trigger	1
11	262-002	Cover, Trigger	1
12	262B001	Case, Trigger	1
13	<i>See Unique</i>	Barrel	
14	<i>See Unique</i>	Bolt, Long Nickel	
15	392LE-009	Handle, Knob	1
16	AS2250-020	Breech Plug	1
17	1761-012	Plug, Tube	1
18	1761A100	Valve Assembly	1
18A	1761A002	Valve Body	1
18B	1761-003	Valve Cap	1
18D	1761-005	O-Ring, AS568-016	2
18F	130-035	O-Ring	1
18G	788-061	Spring, Valve	1
18H	1761A140	Valve Stem, Overmolded	1
19	2300-050	Striker	1
20	2100A011	Pin, Hammer Spcl .185 Dia .442	1
21	1761-021	Barrel Band	1
22	2260-012	Lug, Stock	1
23	1322A026	Sleeve	1
24	130-036	Seal, Face .260 .165 .085	1
25	<i>See Unique</i>	Seal, Breech	
26	130B031	Screw, 8-32 x .437	1
27	AS2250-015	Screw, 8-32 x .750	1
28	88-089	Screw, Set 8-32 x 125	4
29	1322B027	Screw, Breech 4-48x.250	1
30	2261-009	Spring, Hammer	1
31	2260-013	Screw, Stock 1/4-20 x .625	1
32	1761-010	Screw, Tube #8x.188, PPH	3
33	1761-014	Gauge, Pressure	1

PART NUMBER	DESCRIPTION	Qty	
34	1761-104	Gauge, Port Assembly	1
34A	1761-016	Port, Gage	1
34B	1761-005	O-Ring, #16	2
35	1761A017	Adapter, Gage (Clear Zinc)	1
36	1761A023	O-Ring, #2-009	1
37	1761-101	Fill Adapter Assy	1
37A	1761A006	Housing, Fill Adapter	1
37B	1761-005	O-Ring, #16	2
37C	1761-106	Fill Nipple, Back Checking	1
37D	NS1200-047	Filter, Sintered	1
38	1761-102	Cap Assembly	1
38A	1761-011	Cap, Fill Adapter	1
38B	1761-005	O-Ring, #16	1
39	1761-013	Sleeve, Barrel	1
40	1761-020	Set Screw, 6-40 x 3/32	1
41	178B-001	Screw, #6-40 x .145, FSH	1
42	1761-024	Mount, Front Sight	1
43	1761-025**	Sight, Front, Williams	1
44	1761-026	Sight, Rear Fibre Optic 70926	1
45	1761-103	Assy, Stock	1

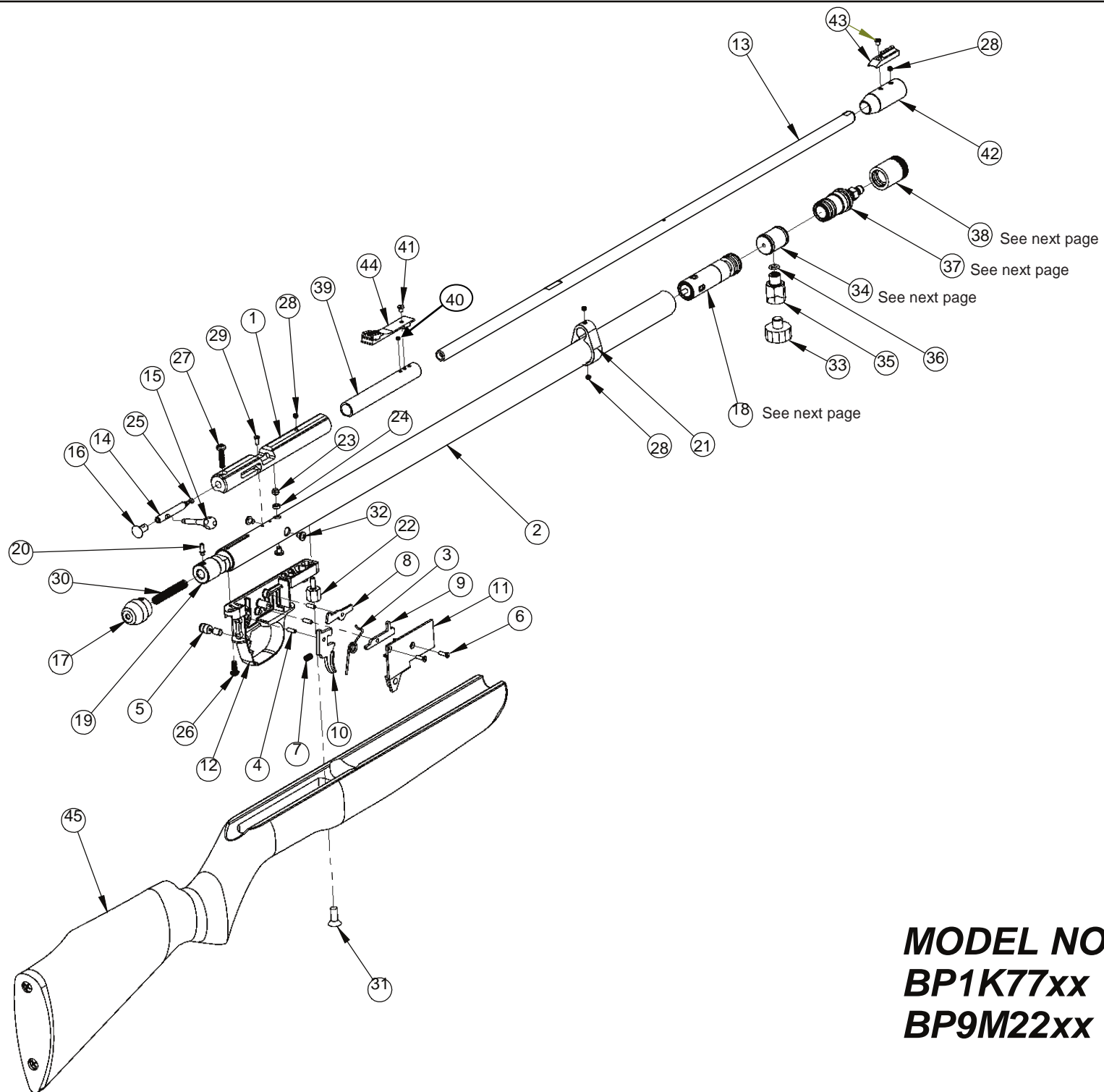
**Williams Front Sight, with mounting screw

BP1K77 Unique Parts List

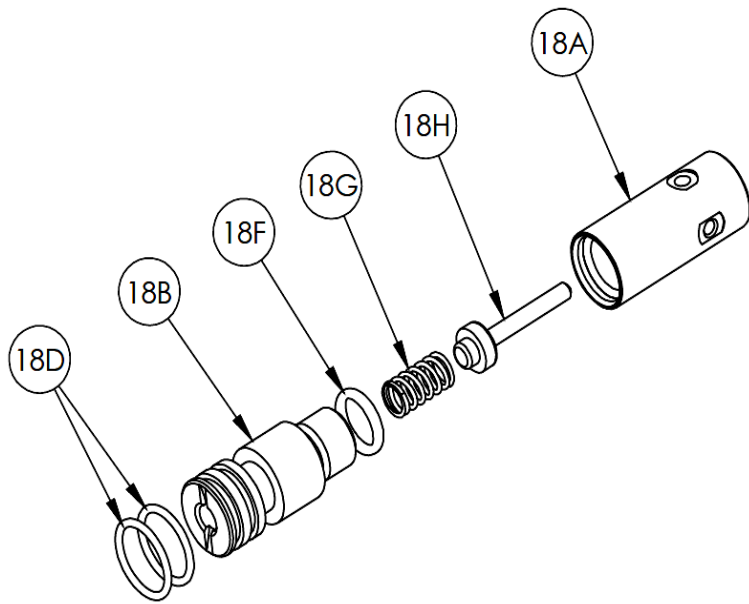
2	1761-001	Tube	1
13	1760SE-001	Barrel, .177cal.	1
14	2300-034	Bolt, .177cal., Long Nose	1
25	397-062	Seal, .177 Breech	1

BP9M22 Unique Parts List

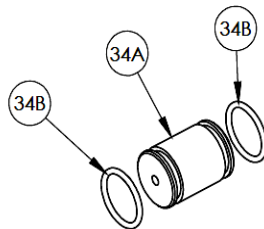
2	2261-001	Tube	1
13	2260SE-001	Barrel, .22cal.	1
14	2261-002	Bolt, 22cal., Long Nose	1
25	970-028	Seal, .22 Breech	1



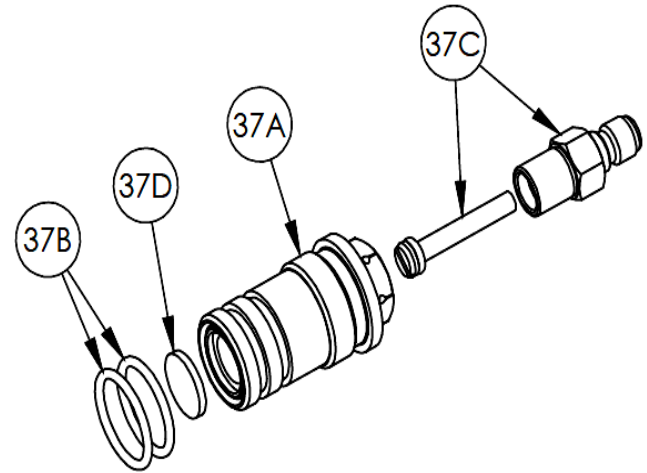
MODEL NOS.
BP1K77xx
BP9M22xx



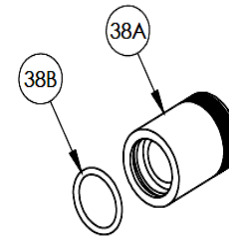
ITEM 18, VALVE ASSEMBLY			
ITEM NO.	PART NUMBER	DESCRIPTION	QTY.
18A	1761A002	VALVE BODY	1
18B	1761-003	VALVE CAP	1
18D	1761-005	O-RING, AS568-016	1
18F	130-035	O-RING	2
18G	788-061	SPRING, VALVE	1
18H	1761A140	VALVE STEM, OVERMOLDED	1



ITEM 34, GAUGE PORT			
ITEM NO.	PART NUMBER	DESCRIPTION	QTY.
34A	1761-016	PORT, GAUGE	1
34B	1761-005	O-RING, AS568-016	1



ITEM 37, FILL ADAPTER			
ITEM NO.	PART NUMBER	DESCRIPTION	QTY.
37A	1761A006	HOUSING ADAPTER	1
37B	1761-005	O-RING, AS568-016	2
37C	1761-106	NIPPLE, ADAPTER	1
37D	NS1200-047	SINTERED FILTER	1



ITEM 38, CAP ASSEMBLY			
ITEM NO.	PART NUMBER	DESCRIPTION	QTY.
38A	1761-011	CAP, ADAPTER	1
38B	1761-005	O-RING, AS568-016	1

MODELS:
BP1K77
BP9M22