



EXPLODED VIEW & PARTS LIST

MODEL 1720T .177 Cal. Target PCP Pistol



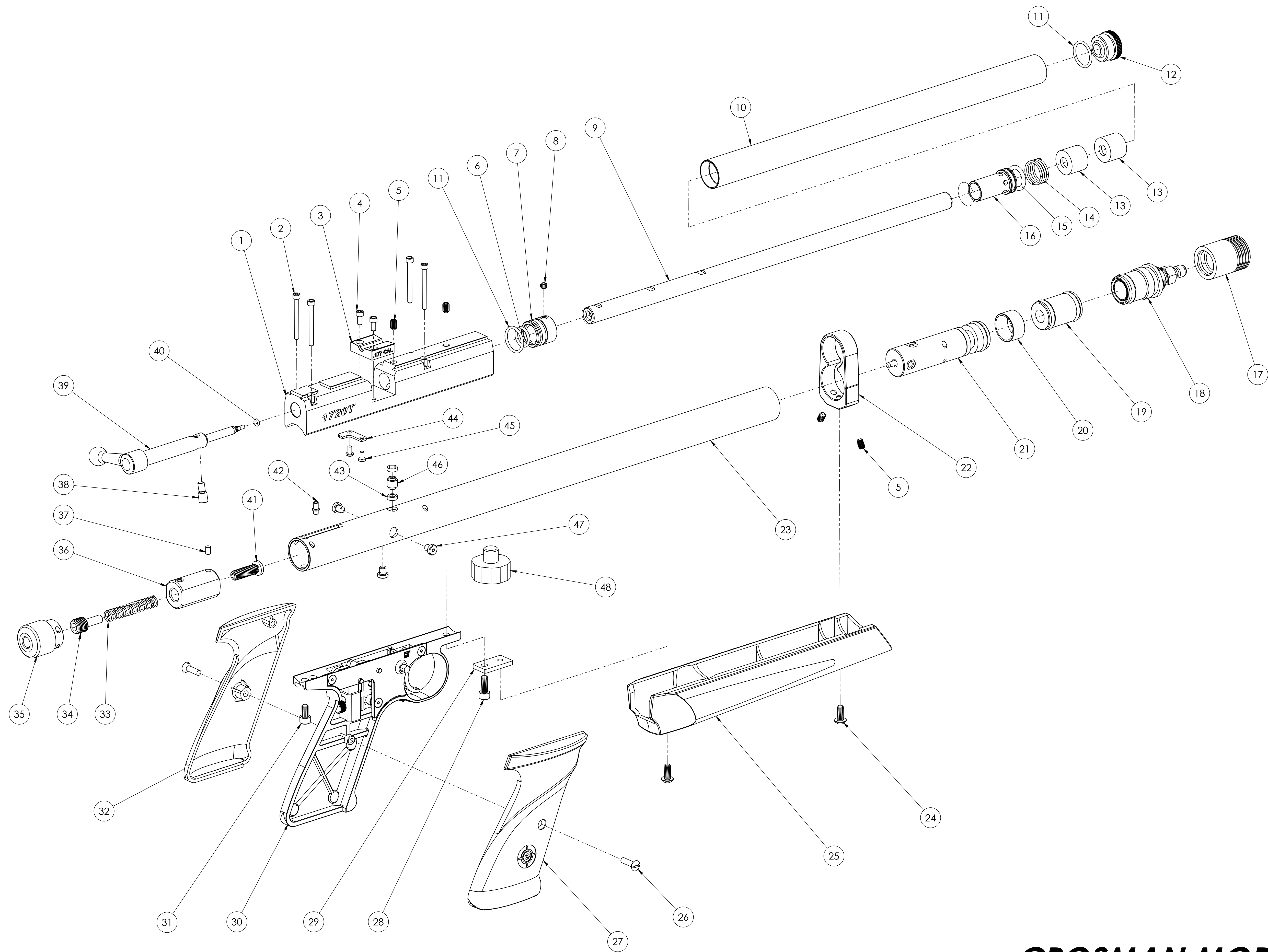
Manufacture Start Date: 6/28/12

Last Update 5/16/14

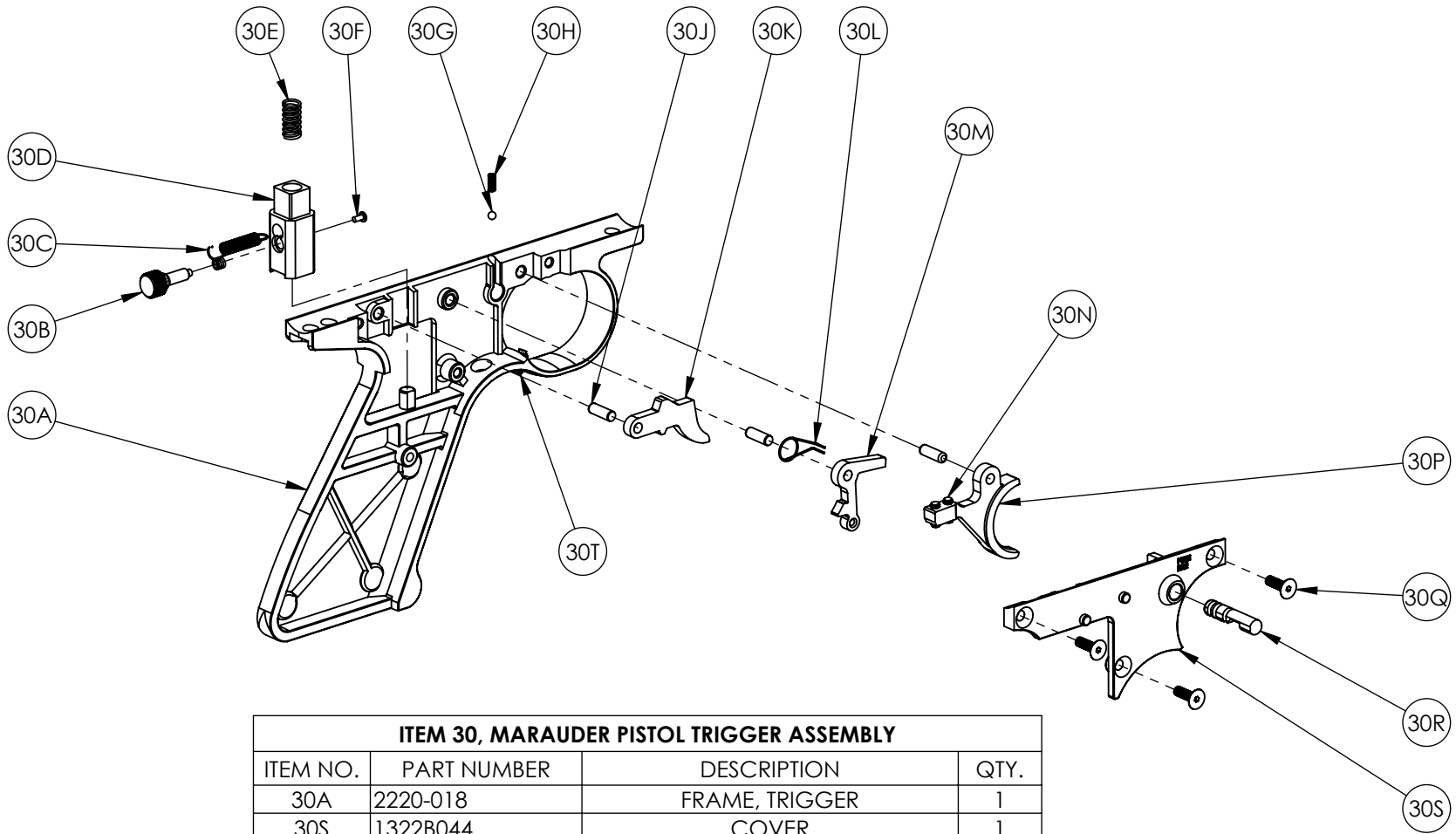
CROSMAN CORPORATION
7629 ROUTES 5 & 20
BLOOMFIELD, NY 14469
Phone: 1-800-724-7486
Parts Order Fax: 585-657-5405

www.crosman.com

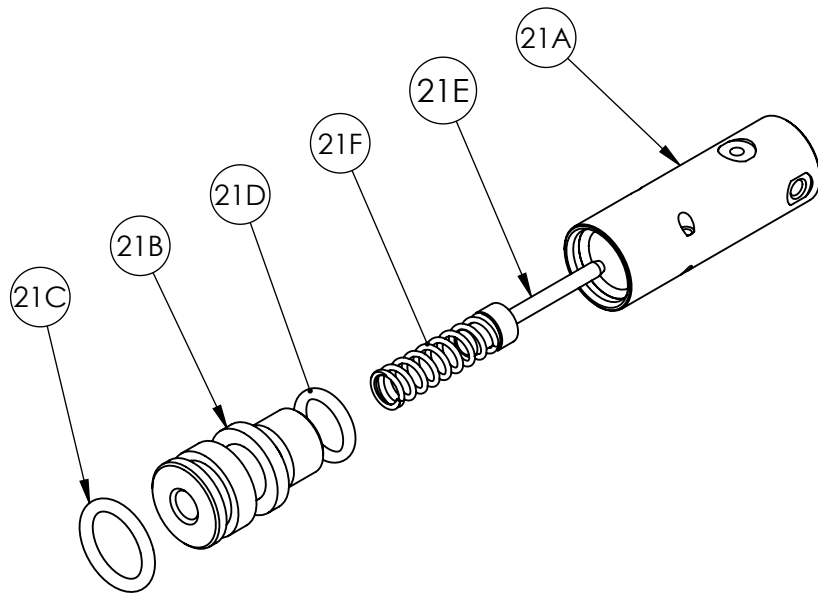
- This EVP and parts list is intended to be an informational guide in ordering parts. It is not instructional material and we therefore assume no responsibility for those who use the same without proper factory training.
- Please order by part number and description.
- Check or money order for the total price must accompany the order.
- For current prices contact Crosman Corporation at 1-800-724-7486 or visit our website www.crosman.com



CROSMAN MODEL: 1720T

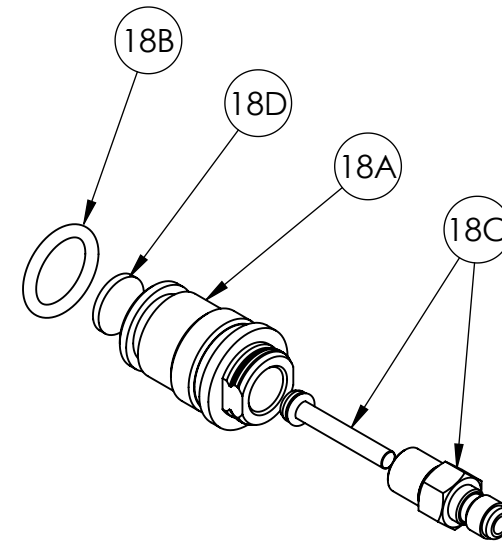


ITEM 30, MARAUDER PISTOL TRIGGER ASSEMBLY			
ITEM NO.	PART NUMBER	DESCRIPTION	QTY.
30A	2220-018	FRAME, TRIGGER	1
30S	1322B044	COVER	1
30Q	1763-056	SCREW, 4-40 x .375, FHCS	3
30N	1763-055	SET SCREW, 4-40 x .312, OV PT	2
30K	2220-021	SEAR	1
30J	2220-025	PIN, DOWEL, .125 X .375	3
30P	2220-019	TRIGGER	1
30R	1322-052	SAFETY	1
30G	105-039	DIA .093 STEEL BALL	1
30H	1322-017	SPRING, SAFETY	1
30T	2300-042	SETSCREW 8-32 x .25 BRASS TIP	1
30M	2220-020	LINK, TRIGGER	1
30E	2220-024	SPRING, SEAR	1
30D	2220-015	HOUSING, ADJUSTER	1
30B	2220-013	SCREW, ADJUSTER	1
30C	2220-022	SPRING, LINK	1
30L	2220-023	SPRING, TRIGGER	1
30F	2220-026	SCREW, 0-80 x .125, PPH	1



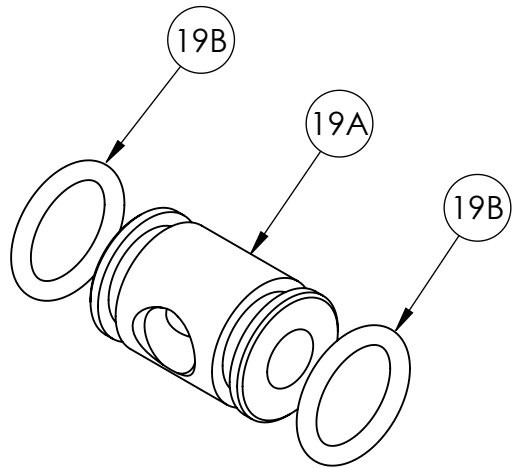
ITEM 21, VALVE ASSEMBLY

ITEM NO.	PART NUMBER	DESCRIPTION	QTY.
21A	1700-002	VALVE BODY	1
21B	1700-003	VALVE CAP	1
21C	1700B005	O-Ring, #113, 80D HNBR	1
21D	130-035	O-RING, 2-111	1
21E	1700-140	VALVE STEM, OVERMOLDED	1
21F	1763-034	SPRING, VALVE	1



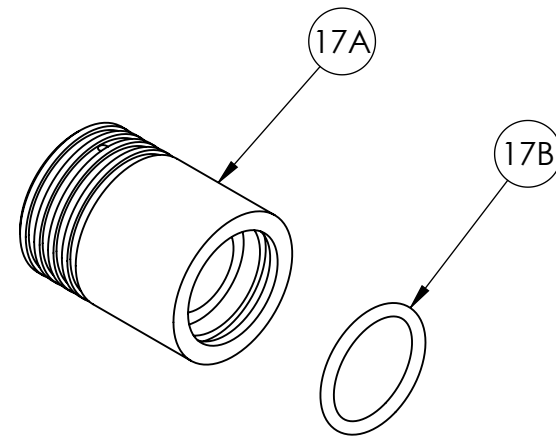
ITEM 18, FILL ADAPTER ASSEMBLY

ITEM NO.	PART NUMBER	DESCRIPTION	QTY.
18A	1700-013	HOUSING, FILL ADAPTER	1
18B	1700B005	O-Ring, #113, 80D HNBR	1
18C	1761-106	NIPPLE, ADAPTER	1
18D	NS1200-047	SINTERED FILTER	1



ITEM 19, GAUGE PORT ASSEMBLY

ITEM NO.	PART NUMBER	DESCRIPTION	QTY.
19A	1700-016	PORT, GAUGE	1
19B	1700B005	O-Ring, #113, 80D HNBR	2



ITEM 17, FILL CAP ASSEMBLY

ITEM NO.	PART NUMBER	DESCRIPTION	QTY.
17A	1761-011	CAP, ADAPTER	1
17B	1761-005	O-RING, AS568-016	1