

Model ER02 OWNER'S MANUAL

READ ALL INSTRUCTIONS AND WARNINGS IN THIS MANUAL BEFORE USING THIS AIRSOFT GUN
 Marine Corps trademarks used under license by Crosman Corporation.

Crosman Corporation
 7629 Routes 5 & 20
 Bloomfield, NY 14469
 www.crosman.com
 1-800-724-7486
 Made in Taiwan

MCER02A515

WARNING: This is not a toy. Adult supervision is required. Misuse may cause serious injury, particularly to the eye. Eye protection must be worn by the user and any person in range. May be dangerous up to 100 yds. Read the owner's manual before using.

WARNING: Do not brandish or display this airsoft gun in public – it may confuse people and may be a crime. Police and others may think it is a firearm. Do not change the coloration and markings to make it look more like a firearm. That is dangerous and may be a crime. READ ALL INSTRUCTIONS AND WARNINGS IN THIS MANUAL BEFORE USING THIS AIRSOFT GUN.

WARNING: This product contains a chemical known to the state of California to cause cancer and birth defects (and other reproductive harms).

BUYER AND USER HAVE THE DUTY TO OBEY ALL LAWS ABOUT THE USE AND OWNERSHIP OF THIS AIRSOFT GUN.

Recommend 18 years or older to purchase. Intended for use by those 16 or older.

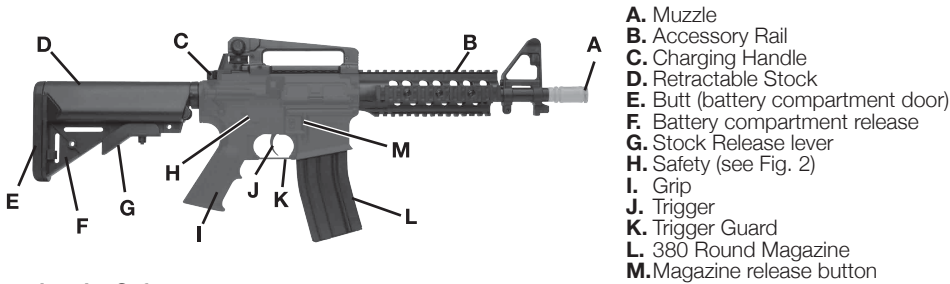
Read this owner's manual completely. And remember, this airsoft gun is not a toy. Treat it as you would a firearm. Always follow the safety instructions in this owner's manual and keep this manual in a safe place for future use.

If you have any questions regarding this airsoft gun contact Crosman at 1-800-724-7486, 585-657-6161 or www.crosman.com.

NOTE: Charge the battery a **MINIMUM** of 3 hours and a **MAXIMUM** of 5 hours prior to initial use. This airsoft gun will not operate properly without a fully charged battery. **DO NOT OVERCHARGE THE BATTERY. UNPLUG THE BATTERY CHARGER WHEN NOT IN USE. USE ONLY THE CHARGER SUPPLIED WITH THE KIT.**

1. Learning the Parts of the Airsoft gun

Learning the names of the parts of the new airsoft gun helps you to understand the owner's manual.



2. Operating the Safety

A. To Put the Airsoft Gun "ON SAFE"

- Locate the safety on the left side of the airsoft gun.
- Turn the safety lever to "SAFE" for "ON SAFE." (Fig 2A). The safety is not "ON SAFE" unless it is pointing to "SAFE".

Keep the airsoft gun in the "ON SAFE" position until you are actually ready to shoot. Then turn the safety to the "OFF SAFE" position.

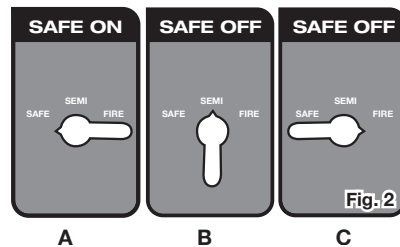
Like all mechanical devices, an airsoft gun safety can fail. Even when the safety is "ON SAFE", continue to handle the airsoft gun safely.

NEVER point the airsoft gun at any person. **NEVER** point the airsoft gun at anything you do not intend to shoot.

B. To Take the Airsoft Gun "OFF SAFE"

NOTE: This airsoft gun fires in semi or full auto-mode. Full auto means it continues to fire plastic BBs as long as you hold the trigger. Semi- auto means you will have to pull the trigger each time you want to fire a shot.

- Locate the safety on the left side of the receiver.
- Turn the lever to "SEMI" for semi-auto mode. (Fig. 2B)
- Turn the lever to "AUTO" for full auto mode. (Fig. 2C)
- The airsoft gun is "OFF SAFE" and ready to fire when pointing to either "semi" or "auto."



3. Loading and Unloading Airsoft BBs

A. Loading

WARNING: Use 6 mm airsoft BBs only in this airsoft gun. Use of any other ammunition can cause injury to you or damage to the airsoft gun. NEVER RE-USE AMMUNITION.

NOTE: For optimum performance Crosman recommends using only Crosman brand airsoft BBs.

- Make sure the airsoft gun is "ON SAFE" (section 2A) and pointed in a SAFE DIRECTION.
- While supporting the BB magazine, push the magazine release button in and remove the magazine
- Align the tip of the loaded speed loader with hole opening on the top of the magazine (Fig. 3)
- Using plunger on speed loader, insert 6mm plastic BBs into magazine.

B. Unloading

- To unload the magazine, point the clip down in a safe direction pointing opening toward a paper cup or container.

NOTE: BBs will release rapidly.

WARNING: Never assume that because the airsoft gun no longer fires a plastic BB and/or the magazine is removed, that a plastic BB is not lodged in the barrel. Always treat the airsoft gun as though it is loaded and with the same respect you would a firearm.

4. CHARGING, LOADING AND REMOVING THE BATTERY

A. CHARGING THE BATTERY

NOTE: Charge the battery a **MINIMUM** of 3 hours and a **MAXIMUM** of 5 hours prior to initial use. This airsoft gun will not operate properly without a fully charged battery. **DO NOT OVERCHARGE THE BATTERY. UNPLUG THE BATTERY CHARGER WHEN NOT IN USE. USE ONLY THE CHARGER SUPPLIED WITH THE KIT.**

- Use only the battery and charger provided with the product.
- Plug the connector on the battery into the connector on the battery charger.
- Plug the charger in to a standard 110v outlet.

NOTE: The battery charging time is 3 hours before initial use. To prolong battery life and maintain the best shooting performance rest the gun for 5-10 minutes after firing about 500 rounds. For optimum performance completely use up the battery before recharging. **DO NOT OVERCHARGE THE BATTERY. UNPLUG THE BATTERY CHARGER WHEN NOT IN USE.**

B. Loading The Battery

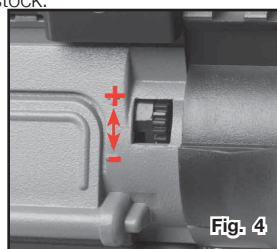
- Make sure the airsoft gun is "ON SAFE" (section 2A), UNLOADED, AND POINTED IN A SAFE DIRECTION.
- Press both sides of the battery compartment release and remove the butt of the stock.
- Plug battery in to the battery connector in the gun.
- Place the battery in the butt with the connector towards the top and slide the butt back on to the gun.
- Tuck the wires into the gun. Slide the butt closed, being careful not to pinch any wires.

C. Removing The Battery

- Make sure the airsoft gun is "ON SAFE" (section 2A), UNLOADED, AND POINTED IN A SAFE DIRECTION.
- Press both sides of the battery compartment release and remove the butt of the stock.
- Unplug battery from the connector in the gun.
- Slide the butt back into the gun and close, being careful not to pinch any wires.

5. Adjusting the Hop Up

- Your airsoft gun is manufactured with a hop-up system. The purpose of this system is to change the spin on the BB as it leaves the muzzle allowing you to adapt your shot for different distances.
- Make sure the airsoft gun is "ON SAFE" (see section 2A) and the magazine is removed.
- Point the airsoft gun in a SAFE DIRECTION.
- Locate the hop up adjustment slide on the side of the gun (fig. 4) Turn the knob down for less spin or up for more spin.



6. Selecting the Firing Mode

Electronic Mode

When the battery is installed in the gun, the gun defaults to electronic mode. In the electronic mode the gun may fire in semi or full-auto mode. Full-auto means it will continue to fire plastic BBs as long as you hold the trigger. Semi-auto means you will have to pull the trigger each time you want to fire a shot.

Spring Mode

The airsoft gun may be fired in single shot spring mode. To fire in this mode, cock the gun by pulling the bolt cocking all the way and slowly releasing it.

NOTE: IF THE BATTERY IS IN THE AIRSOFT GUN IT WILL AUTOMATICALLY RETURN TO THE ELECTRONIC MODE (FULL OR SEMI-AUTO) AFTER EACH SHOT

7. Aiming and Firing Safely

A. Before Firing

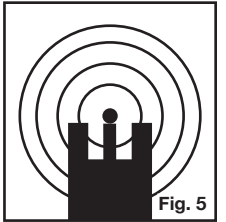
- You and others with you should always wear eye protection to protect your eyes.
- Always point the airsoft gun in a SAFE DIRECTION.
- Do not shoot at hard surfaces or at the surface of water. The plastic BBs may bounce off or ricochet and hit someone or something you had not intended to hit.
- DO NOT re-use plastic BBs because they could possibly cause damage to the airsoft gun.
- This airsoft gun is designed for target shooting and is suited for both indoor and outdoor use. Always remember to place the target carefully.
- THINK about what you will hit if you miss the target.
- The airsoft gun is correctly aimed when the front sight blade is position exactly in the notch of the rear sight.
- The top of the front sight blade should be even with the top of the notch in the rear sight. The bulls-eye should appear to rest on the top of the front sight (Fig. 5).

B. Adjusting the Sights

Rear Sight

- The rear sight is adjustable for elevation only.
- To adjust for elevation, use the dial at the base of the sight.
- Turn clockwise to move the point of impact up.
- Turn counter-clockwise to move the point of impact down

NOTE: The Windage dial is for looks only. It is not functional.



C. Firing

- Make sure the airsoft gun is "ON SAFE" (see Step 2A) and pointed in a SAFE DIRECTION.
- Turn the lever to "SEMI" for semi-auto mode. (Fig. 2b)
- Turn the lever to "AUTO" for full auto mode. (Fig. 2c)
- When you are sure of the target and backstop, and the area around the target is clear, take the airsoft gun "OFF SAFE" (section 2A) aim and pull the trigger to fire. The airsoft gun is "OFF SAFE" and ready to fire when pointing to either "semi" or "auto."

8. Maintaining Your Airsoft Gun

- DO NOT MODIFY OR ALTER YOUR AIRSOFT GUN. Attempts to modify the airsoft gun in any way inconsistent with this manual may make it unsafe to use, cause serious injury and will void the warranty.
- If you drop your airsoft gun, check to see that it works properly before you use it again. If anything seems changed, like a shorter or weaker trigger pull, this may mean worn or broken parts. Call Customer Service at Crosman for assistance before using your airsoft gun again.

A. To clean the Airsoft gun barrel:

- Turn off hop up system on gun (Sec 5) or set it to minimum.
- Spray a cleaning patch with Crosman Nitro Lubricant oil.
- With patch on rod, insert in into barrel to clean
- Swab barrel 3-4 times
- Repeat swabbing procedure with a dry patch
- Barrel is clean when patches come out clean after dry swabbing.

B. Trouble shooting/Increasing Your Shooting Enjoyment

- Occasionally shake the gun to ensure smooth BB feeding.
- Prevent dust and dirt from getting into the magazine to help maintain the performance of your airsoft rifle.
- Change the battery if firing cycle becomes slow.

C. Clearing a Jam

- Never look down the end of barrel to see if a jam has been cleared.
- Make sure the airsoft gun is "ON SAFE" and pointed in a SAFE DIRECTION.
- Remove the loading chamber
- Insert the tapered end of the cleaning rod into the barrel, with the angle toward the breech (where the magazine connects).
- CAREFULLY and slowly apply more pressure until you push the BB out of the breech.
- Reinstall the magazine and test gun.

9. ADJUSTING THE STOCK

- The airsoft gun is shipped with the stock in the closed position and is capable of adjusting to different lengths.
- Before adjusting the stock make sure the airsoft gun is "ON SAFE", (see section 2A) and pointed in a SAFE DIRECTION.
- Push the stock release lever and adjust the stock until it locks into the desired position.

10. Reviewing Safety

- Do not ever point the airsoft gun at any person. Do not ever point the airsoft gun at anything you do not intend to shoot.
- Always treat the airsoft gun as though it is loaded and as you would a firearm.
- Always aim in a SAFE DIRECTION. Always keep the muzzle of the airsoft gun pointed in A SAFE DIRECTION.
- Always keep the airsoft gun "ON SAFE" until you are ready to shoot in a SAFE DIRECTION.
- Always check to see if the airsoft gun is "ON SAFE" and unloaded when getting it from another person or from storage.
- Always keep your finger off the trigger and out of the trigger guard until ready to shoot.
- You and others with you should always wear eye protection to protect your eyes.
- Always wear eye protection over your regular glasses.
- Use 6 mm plastic BBs only.
- Do not reuse plastic BBs because they could cause possible damage to the airsoft gun.
- Do not shoot at hard surfaces or at the surface of water. The plastic BBs may bounce off or ricochet and hit someone or something you had not intended to hit.
- Replace the backstop if it becomes worn. Place the backstop in a location that will be safe should the backstop fail.
- The backstop should be checked for wear before and after each use. All backstops are subject to wear and will eventually fail. Replace the backstop if the surface is worn or damaged or if a ricochet occurs.
- Do not attempt to disassemble or tamper with the airsoft gun.
- DO NOT MODIFY OR ALTER THE AIRSOFT GUN. Attempts to modify the airsoft gun in any way may make the airsoft gun unsafe to use, cause serious injury or death and will void the warranty.
- Using unauthorized repair centers or modifying the function of the airsoft gun in any way may be unsafe and will void the warranty.
- Do not put the airsoft gun away loaded. Make sure ALL of the plastic BBs are unloaded from the airsoft gun.
- Always store this airsoft gun in a secure location.

SPECIFICATIONS

Mechanism	Full auto/semi-auto	Capacity	65 BB
Power Source	Electric/Spring	Velocity	Up to 275 fps
Caliber	6mm	Safety	Lever
Ammunition	Airsoft BB		

PERFORMANCE: Many factors can affect velocity, including brand of projectile, type of projectile and barrel condition.

DO NOT RETURN THIS PRODUCT TO THE STORE.

Our customer service representatives can help. You can get answers to frequently asked questions at www.crosman.com or you can contact us directly at 1-800-724-7486.

CUSTOMER SERVICE

If the airsoft gun is not functioning, call Crosman Corporation Customer service at 1-800-724-7486 or 585-657-6161. (International customers should contact their distributor.) DO NOT ATTEMPT TO DISASSEMBLE IT! If you take it apart you probably will not be able to reassemble it. Crosman assumes no warranty responsibility under such circumstances.

For optimum performance use Crosman® ammunition only. Using other than Crosman® branded ammunition may cause the product to malfunction and may void the warranty.

LIMITED 30 DAY WARRANTY

This product is warranted to the retail consumer for 30 days from date of retail purchase against defects in material and workmanship and is transferable.

WHAT IS COVERED

Replacement parts and labor. Transportation charges to consumer for repaired product.

WHAT IS NOT COVERED

Transportation charges of product to Crosman . Damages caused by abuse, modification or failure to perform normal maintenance. ANY OTHER EXPENSE. CONSEQUENTIAL DAMAGES, INCIDENTAL DAMAGES, OR INCIDENTAL EXPENSES, INCLUDING DAMAGE TO PROPERTY. SOME STATES DO NOT ALLOW THE EXCLUSION OR LIMITATION OF INCIDENTAL OR CONSEQUENTIAL DAMAGES, SO THE ABOVE LIMITATION OR EXCLUSION MAY NOT APPLY TO YOU.

WARRANTY CLAIMS

USA Customers: Attach your name, address, description of problem, phone number and copy of sales receipt to product. Package and return to Crosman Corporation, Routes 5 & 20, Bloomfield, NY 14469.

International Customers: Return product to your distributor. If you do not know your distributor call 585-657-6161 and ask for our International Department for assistance.

IMPLIED WARRANTIES

ANY IMPLIED WARRANTIES, INCLUDING THE IMPLIED WARRANTIES OF MERCHANTABILITY AND FITNESS FOR A PARTICULAR PURPOSE, ARE LIMITED IN DURATION TO 30 DAYS FROM DATE OF RETAIL PURCHASE. SOME STATES DO NOT ALLOW LIMITATIONS ON HOW LONG AN IMPLIED WARRANTY LASTS, SO THE ABOVE LIMITATIONS MAY NOT APPLY TO YOU.

To the extent any provision of this warranty is prohibited by federal, state, or municipal law which cannot be preempted, it shall not be applicable. This warranty gives you specific legal rights, and you may also have other rights which vary from state to state.

CROSMAN is a registered trademark of Crosman Corporation in the United States.

Check out our complete line of Marine Corps airsoft products at marinesairsoft.com
 For more information about the Marine Corps and becoming a Marine, visit marines.com
 Officially Licensed Product of the United States Marine Corps, www.marines.com and 1.800.marines.

