



EXPLODED VIEW & PARTS LIST

CH2000 CHALLENGER 2000 TARGET RIFLE

CROSMAN CORPORATION
RT 5 & 20
EAST BLOOMFIELD, NY 14443

Phone: 1-800-724-7486
Parts Order Fax: 585-657-5405

CH2000 PART LIST

<u>Part Number</u>	<u>Description</u>
2250-013	Piercing Knob
357-202	Pin, Roll .062 DIA .375
38-117	Screw, 6-32 Siftpng Fil
397-036	O-Ring
397-037	O-Ring
397-041	Receiver Screw
397-042	Stock Lug
397-049	Trigger
397-050	Pin
397-051	Sear
397-061	Screw, 6-32 x1/4 Oval C Sink
397-062	Breech Seal, .177
397A048	Trigger Case, Right
397A052	Sear Spring
760A017	Safety
788-061	Spring, Cmprsn .042 MUW
CRS5177-040	Set Screw
G397-001	Filler Cap Assembly
G397-009	Valve Body, Inlet
G397-010	Piercing Stem Guide
G397-012	Chamber Plug, Face
G397-013	Exhaust Valve Assembly
G397T-001	Assembly, Stock
G397T-001	Stock Assembly
G397T-002*	Stock*
G397T-004	Trigger Pack Assembly
G397T-005	Assembly, Barrel
G397T-006*	Adjustment Rod Assembly *
G397T-010	Striker
G397T-012	Bolt Spring
G397T-013	Charging Handle
G397T-014	Valve Assembly
G397T-015	Butt Plate*
G397T-016	Charger Latch
G397T-017*	Assembly Cheek Piece*
G397T-020	Butt Plate Spacer
G397T-021	Clamp Screw
G397T-022	Release Spring
G397T-023	Bolt Pin
G397T-024	Butt Plate Screw
G397T-025	Clamp Bushing
G397T-026	Main Spring
G397T-027	Thread Insert
G397T-028	Valve Body, Exhaust
G397T-034	Valve Spacer
G397T-037	Trigger Case, Left

<u>Part Number</u>	<u>Description</u>
G397T-039	Pad Lock Pin
G397T-060	Trigger Spring
G397T-545	Label, Challenger Sticker
G397TA008	Bolt, Target
G397TA044	Bolt Screw
G397TA058	Bolt Handle Assembly
JTX-080	O-Ring, Ball Lock

* Can only be ordered as part of the G397T-001 Stock Assembly

● This parts list is intended to be an informational guide in ordering parts. It is not instructional material and we therefore assume no responsibility for those who use the same without proper factory training.

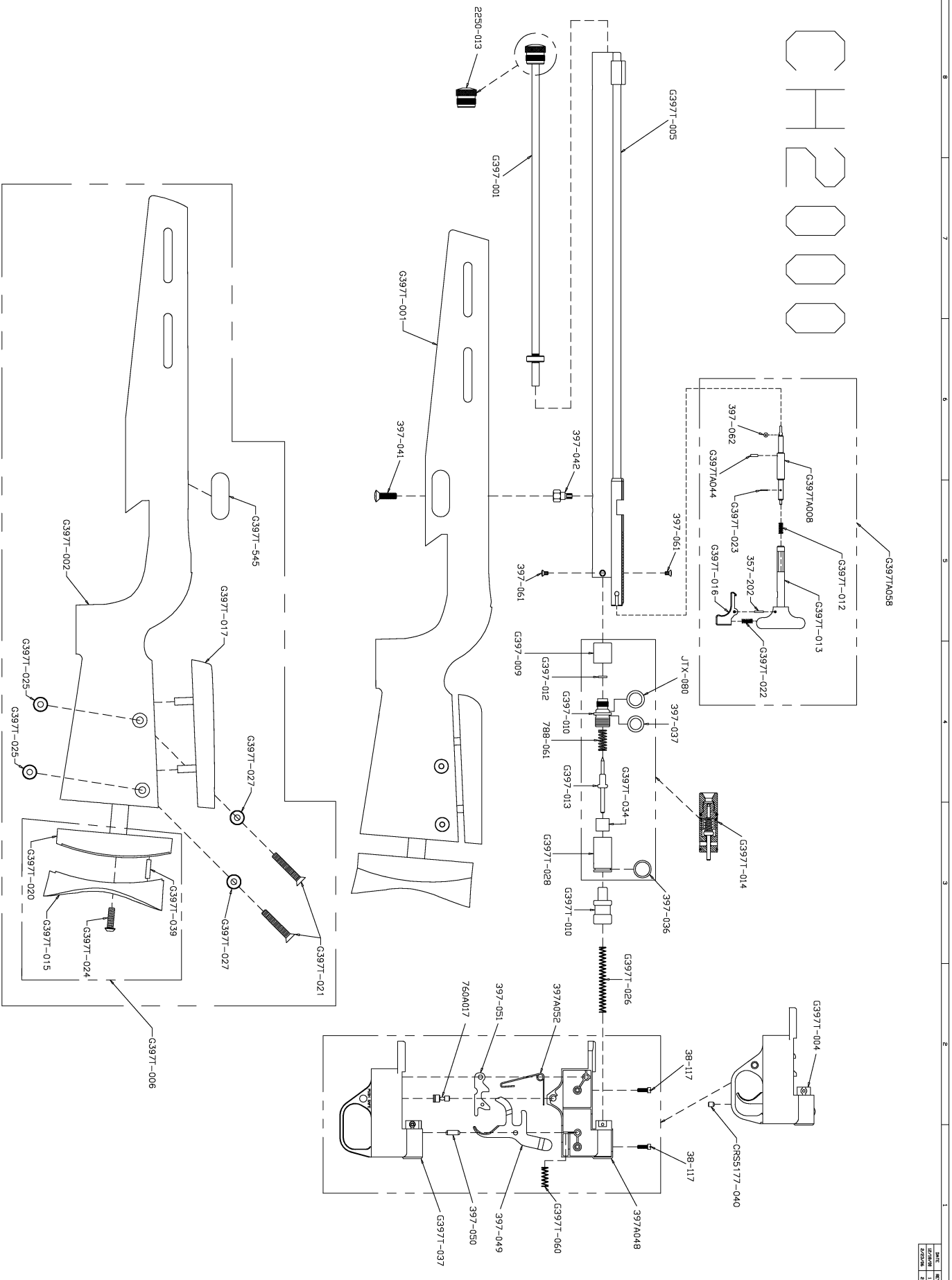
● Please order by part number and description

● Check or money order for the total price must accompany the order.

● For current prices contact Crosman Corporation at 800-824-7486 or visit our website www.crosman.com

Updated: 2-23-06

CH2000



REV	DATE
1	1/20/00
2	1/20/00