

# BENJAMIN<sup>®</sup>

EXPLODED VIEW  
& PARTSLIST

## Benjamin Discovery



**Dual Fuel Compressed  
Air / CO2 Air Rifle  
Models: BP1K77xx  
and BP9M22xx**



CROSMAN CORPORATION  
RT 5 & 20  
EAST BLOOMFIELD, NY 14443  
Phone: 1-800-724-7486  
Parts Order Fax: 585-657-5405  
[www.crosman.com](http://www.crosman.com)

## PART LIST for BP1K77xx & BP9M22xx

Manufacture Start Date: 01/14/08

### BP1K77xx & BP9M22xx Common Parts List

	PART NUMBER	DESCRIPTION
1	1761-019	BREECH
2	1761-001	TUBE
3	262-020	SPRING-SEAR
4	1322-045	PIN DIA .125 x .390 (3)
5	788A031	SAFETY
6	1322-054	SCREW, COVER (2)
7	2260-011	SPRING, TRIGGER
8	1322A048	SEAR
9	262A003	LINK
10	262A004	TRIGGER
11	262-002	COVER
12	262B001	CASE
13	<i>See Unique</i>	BARREL
14	<i>See Unique</i>	BOLT, LONG NICKEL
15	392LE-009	HANDLE, KNOB
16	AS2250-020	BREECH PLUG
17	1761-012	PLUG, TUBE
18	1761A100	VALVE ASSEMBLY
19	2300-050	STRIKER
20	2100A011	HAMMER PIN
21	1761-021	BARREL BAND
22	2260-012	LUG, STOCK
23	1322A026	SLEEVE
24	130-036	BREECH GASKET
25	<i>See Unique</i>	SEAL, BREECH O-RING
26	130B031	SCREW, 8-32 x .437
27	AS2250-015	SCREW, 8-32 x .750
28	88-089	SET SCREW 8-32 x 125 (4)
29	1322B027	SCREW, 4-48 x250
30	2261-009	SPRING, HAMMER
31	2260-013	SCREW, 1/4-20 x .625
32	1761-010	SCREW, #8x.188, PPH (3)
33	1761-014	GAUGE
34	1761-104	GAUGE PORT ASSY
35	1761A017	ADAPTER, GAUGE
36	1761A023	O-RING, #2-009
37	1761-101	ADAPTER ASSEMBLY
38	1761-102	CAP ASSEMBLY
39	1761-013	SLEEVE, BARREL

	PART NUMBER	DESCRIPTION
40	1761-020	SETSCREW, #6-40 x .094
41	178B-001	SCREW, #6-40 x .145, FSH
42	1761-024	MOUNT, FRONT SIGHT
43	1761-025**	SIGHT, FRONT, WILLIAMS
44	1761-026	SIGHT, REAR, WILLIAMS
45	1761-103	STOCK ASSEMBLY

### BP1K77xx Unique Parts List

13	1760SE-001	BARREL, 24 CROS 177 CAL.
14	2300-034	BOLT, 177CAL LONG NICKEL
25	397-062	SEAL, .177 BREECH O-RING

### BP9M22xx Unique Parts list

13	2260SE-001	BARREL, .22 CAL.
14	2261-002	BOLT .22CAL LONG NICKEL
25	970-028	O-RING

\*\*Williams Front Sight, with mounting screw

- This parts list is intended to be an informational guide in ordering parts. It is not instructional material and we therefore assume no responsibility for those who use the same without proper factory training.

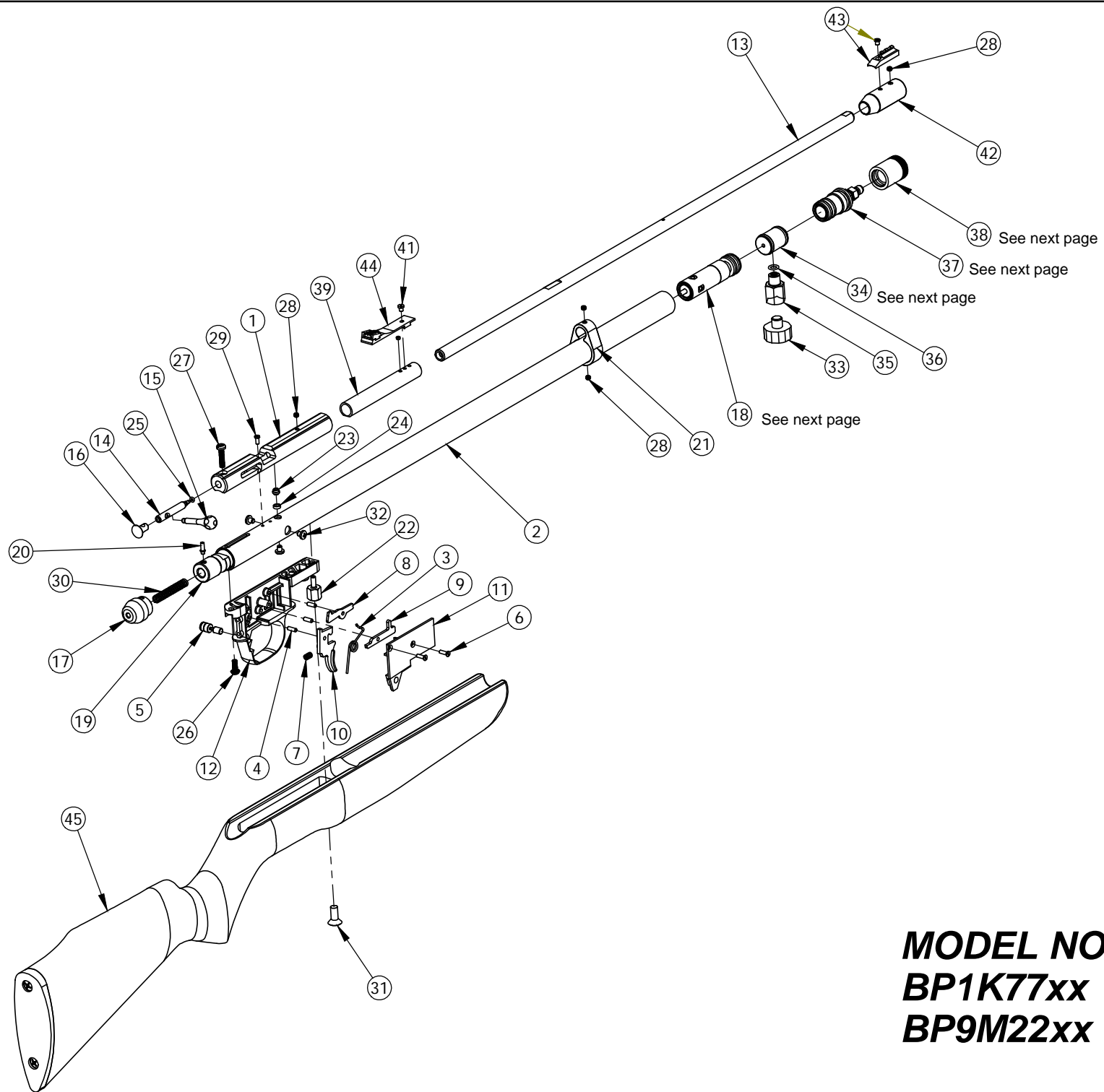
- Please order by part number and description.

- Check or money order for the total price must accompany the order.

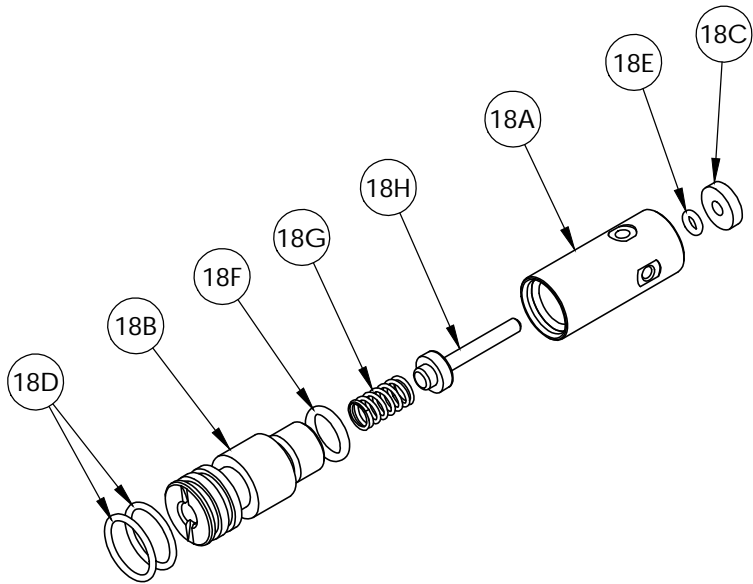
- For current prices contact Crosman Corporation at 800-724-7486 or visit our

website [www.crosman.com](http://www.crosman.com)

Updated: 05/28/14

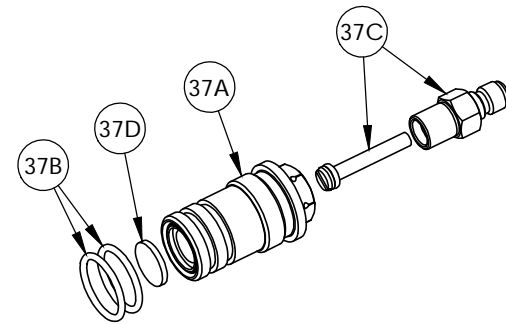


**MODEL NOS.**  
**BP1K77xx**  
**BP9M22xx**



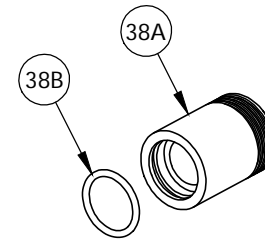
**ITEM 18, VALVE ASSEMBLY**

ITEM NO.	PART NUMBER	DESCRIPTION	QTY.
18A	1761-002	VALVE BODY	1
18B	1761-003	VALVE CAP	1
18C	1761-004	RETAINING COLLAR	1
18D	1761-005	O-RING, AS568-016	2
18E	CAK-008	O-RING	1
18F	130-035	O-RING	1
18G	788-061	SPRING, VALVE	1
18H	1761-140	VALVE STEM, OVERMOLDED	1



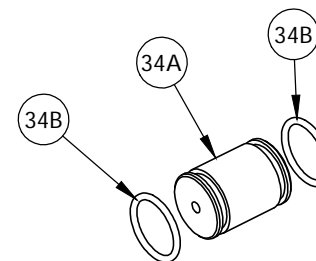
**ITEM 37, FILL ADAPTER**

ITEM NO.	PART NUMBER	DESCRIPTION	QTY.
37A	1761-006	HOUSING, ADAPTER	1
37B	1761-005	O-RING, AS568-016	2
37C	1761-106	NIPPLE, ADAPTER	1
37D	NS1200-047	SINTERED FILTER	1



**ITEM 38, CAP ASSEMBLY**

ITEM NO.	PART NUMBER	DESCRIPTION	QTY.
38A	1761-011	CAP, ADAPTER	1
38B	1761-005	O-RING, AS568-016	1



**ITEM 34, GAUGE PORT**

ITEM NO.	PART NUMBER	DESCRIPTION	QTY.
34A	1761-016	PORT, GAUGE	1
34B	1761-005	O-RING, AS568-016	2

**MODEL NOS.  
BP1K77xx  
BP9M22xx**