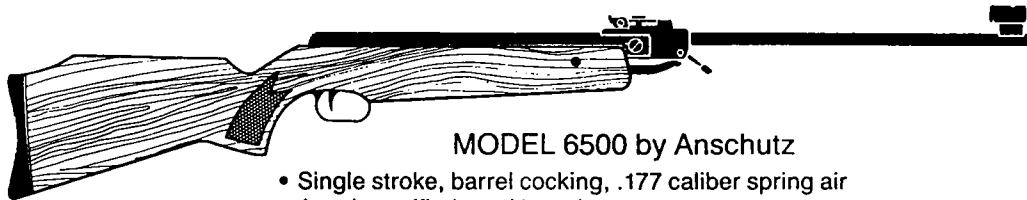




EXPLODED VIEW, PARTS AND PRICE LIST

CROSMAN AIRGUNS
Challenger
THE WORLD-CLASS AIRGUN

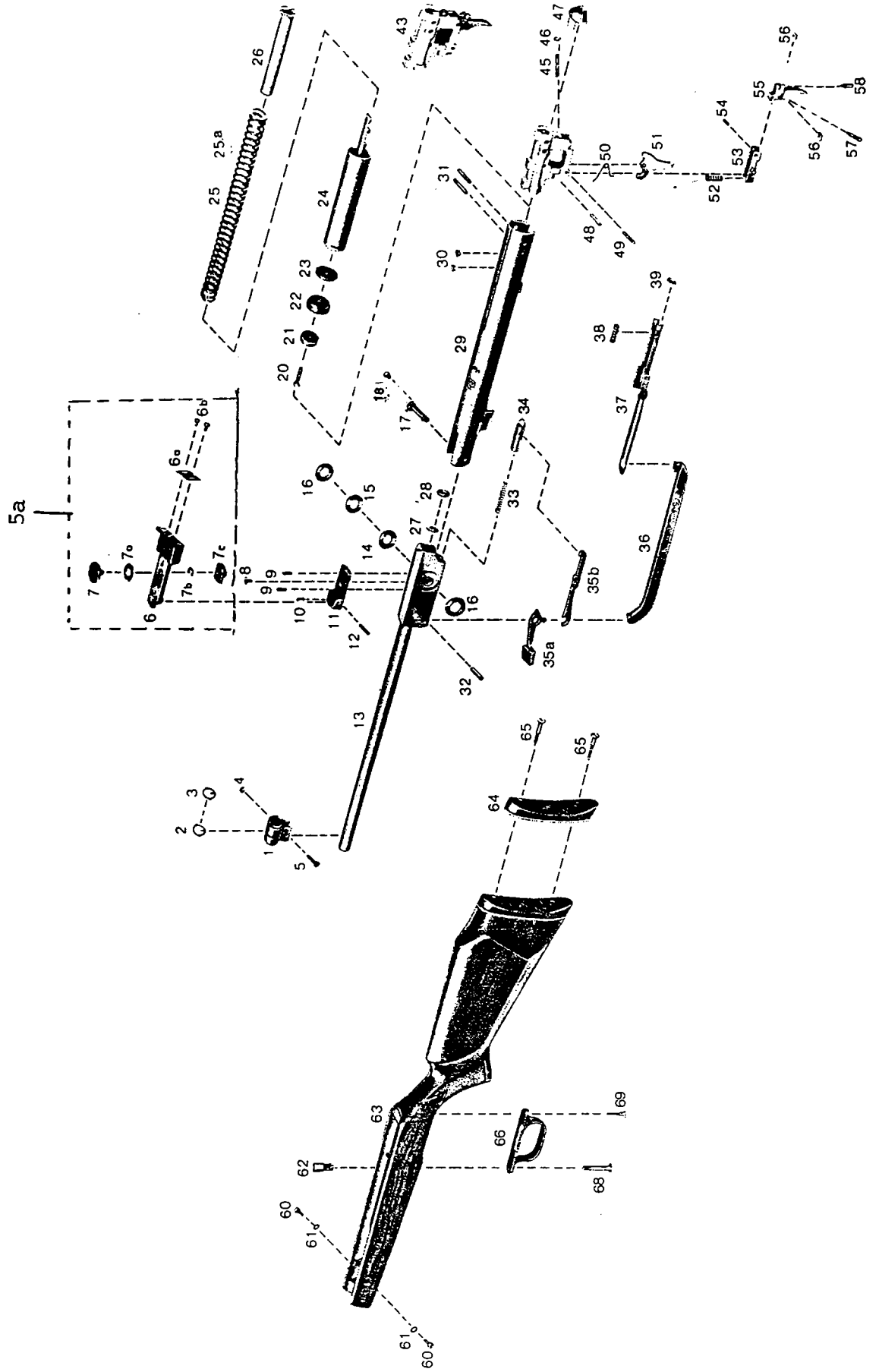


MODEL 6500 by Anschutz

- Single stroke, barrel cocking, .177 caliber spring air
- Anschutz rifled steel barrel
- Finely balanced, hardwood stock
- Tunnel front sight—micrometer rear sight
- Positive barrel locking mechanism for consistent sight alignment
- 690-720 fps
- Rubber butt plate

This parts and price list is intended to be an informational guide in ordering Crosman parts. It is not instructional material and we therefore assume no responsibility for those who use same without proper factory training.

Model 6500



MODEL 6500

PARTS

PART #	DESCRIPTION	PART #	DESCRIPTION
6500-001	Front Sight (Without Insert)	6500-031	Trigger Holding Pins (2)
6500-002	Post Insert	6500-032	Cocking Lever Pin
6500-003	Triangular Sight Insert	6500-033	Barrel Detent Spring
6500-004	Front Sight Screw Retainer	6500-034	Barrel Detent
6500-005	Front Sight Lock Screw	6500-35A	Barrel Release Lever
6500-05A	Front Sight Assembly	6500-35B	Barrel Lock Link
6500-006	Rear Sight Flap	6500-036	Cocking Rod
6500-06A	Rear Sight Blade	6500-037	Trigger Safety Lever
6500-06B	Pan Head Screw (2)	6500-038	Trigger Safety Lever Spring
6500-007	Rear Sight Elevation Screw	6500-039	Safety Lever Spring Plate
6500-07A	Elevation Screw Click Spring	6500-043	Trigger Assembly Complete
6500-07B	Elevation Screw Retainer	6500-045	Sear Adjusting Screw
6500-07C	Elevation Screw Nut	6500-046	Sear Adjusting Screw Nut
6500-008	Rear Sight Screw	6500-047	Rear Tube Cap
6500-009	Rear Sight Locating Pins (2)	6500-048	Sear Pivot Pin
6500-010	Rear Sight Spring	6500-049	Sear Latch Pivot Pin
6500-011	Rear Sight Base	6500-050	Sear Pivot Spring
6500-012	Rear Sight Pin	6500-051	Sear
6500-013	Barrel	6500-052	Trigger Spring
6500-014	Barrel Washer	6500-053	Sear Latch
6500-015	Barrel Washer	6500-054	Sear Latch Pivot Pin
6500-016	Barrel Spring Washer (2)	6500-055	Trigger
6500-017	Barrel Pivot Screw	6500-056	Trigger Screw Lock Nut (2)
6500-018	Barrel Pivot Lock Screw	6500-057	Trigger Set Screw
6500-020	Piston Cup Screw	6500-058	Trigger Creep Screw
6500-021	Buffer	6500-060	Front Stock Screw (2)
6500-022	Piston Seal	6500-061	Front Stock Screw Lock Washer (2)
6500-023	Piston Washer	6500-062	Rear Stock Screw Spacer
6500-024	Piston Complete	6500-063	Stock (Including Butt Plate)
6500-025	Mainspring (Long Range)	6500-064	Butt Plate
6500-25A	Mainspring (Target)	6500-065	Butt Plate Screw (2)
6500-026	Mainspring Sliding Tube	6500-066	Trigger Guard
6500-027	Spacer Ring	6500-068	Locating Stock Screw
6500-028	Sealing Ring	6500-069	Trigger Guard Screw
6500-029	Compression Tube		
6500-030	Plugs (2)		