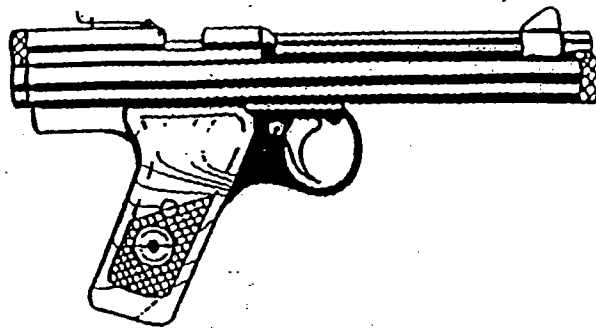


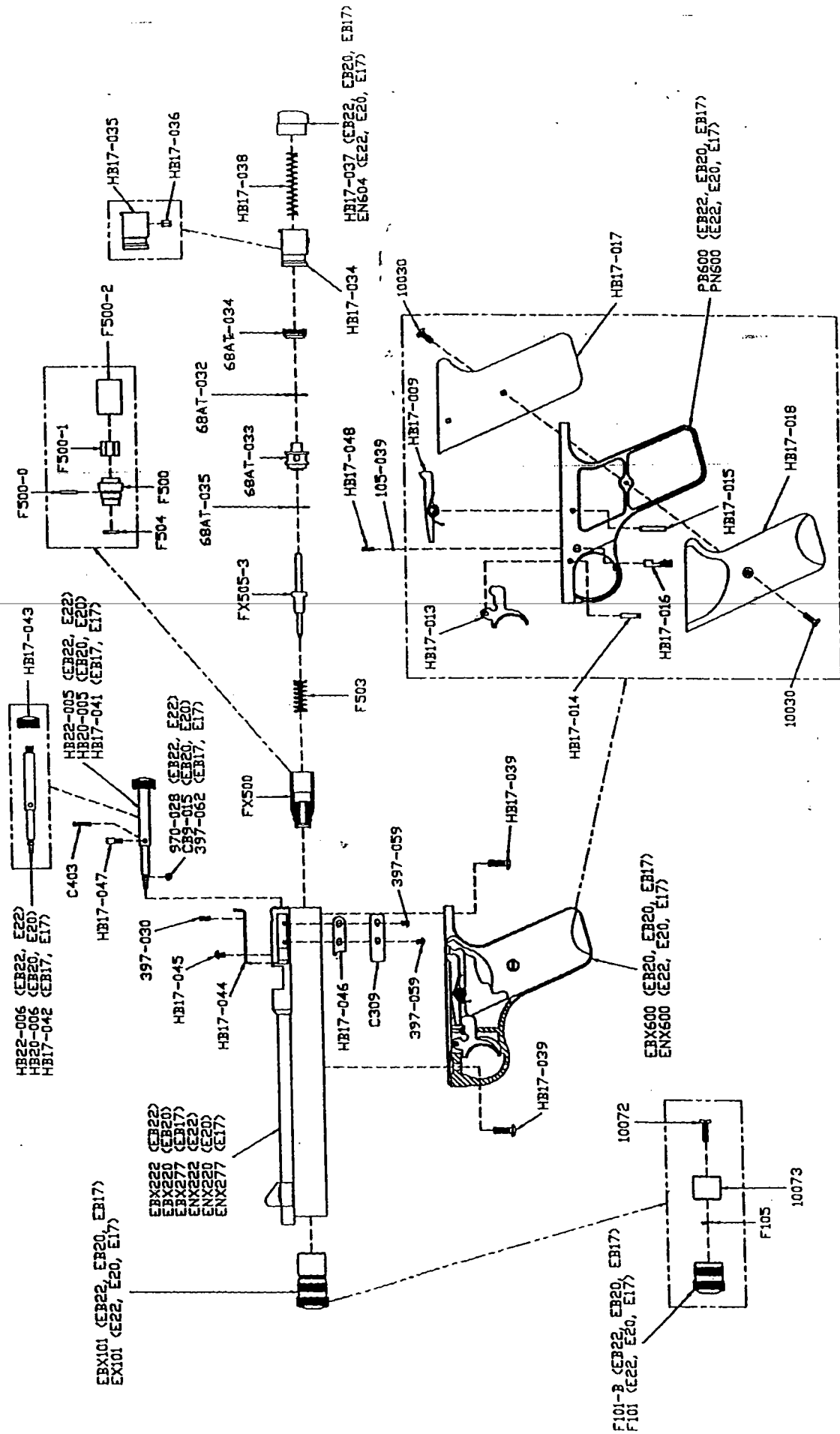


EXPLODED VIEW, PARTS AND PRICE LIST

MODEL E9 SERIES



This parts and price list is intended to be an informational guide in ordering Benjamin Sheridan parts. It is not instructional material and we therefore assume no responsibility for those who use the same without proper factory training.



HB22-006 (EB22, E22)
 HB20-006 (EB20, E20)
 HB17-042 (EB17, E17)

EBX101 (EB22, EB20, EB17)
 EX101 (E22, E20, E17)

EBX222 (EB22)
 EBX220 (EB20)
 EBX277 (EB17)
 ENX222 (E22)
 ENX220 (E20)
 ENX277 (E17)

F101-B (EB22, EB20, EB17)
 F101 (E22, E20, E17)

EBX600 (EB20, EB20, EB17)
 ENX600 (E22, E20, E17)

PB600 (EB22, EB20, EB17)
 PN600 (E22, E20, E17)

MODELS
EB17 EB20 EB22
E17 E20 E22
PARTS AND PRICE LIST
NON - CARTRIDGE VALVE

<u>PART NUMBER</u>	<u>QTY PER</u>	<u>PART NAME</u>	<u>COST</u>	
10030	2	GRIP SCREW (see HB17-019)	*	each
10072	1	FILLER CAP SCREW	\$.50	
10073	1	FILLER HEAD	*	
105-039	1	SAFETY BALL	\$.50	
397-030	1	ELEVATION SCREW	\$.50	
397-059	2	CAM FACE SCREW	\$.50	each
397-062	1	O-RING	\$.50	
68AT-032	1	LEAD VALVE GUIDE GASKET	\$.52	
68AT-033	1	VALVE GUIDE	\$11.05	
68AT-034	1	VALVE GUIDE NUT	\$1.34	
68AT-035	1	VALVE GUIDE GASKET	\$.50	
970-028	1	O-RING	\$.50	
C309	1	CAM FACE COVER (see 398-058)	*	
C403	1	BOLT SPRING	\$.50	
CB9-015	1	O-RING	\$.50	
EBX101	1	FILLER CAP ASS'Y (EB22, EB20, EB17)	*	
EBX220	1	BARREL ASS'Y (EB20)	\$83.56	
EBX222	1	BARREL ASS'Y (EB22)	\$84.17	
EBX277	1	BARREL ASS'Y (EB17)	\$84.21	
EBX600	1	FRAME ASS'Y (EB22, EB20, EB17)	\$35.68	
EN604	1	RETAINING CAP (E22, E20, E17)(see H17-004)	*	
ENX220	1	BARREL ASS'Y (E20)	\$101.02	
ENX222	1	BARREL ASS'Y (E22)	*	
ENX277	1	BARREL ASS'Y (E17)	\$94.43	
ENX600	1	FRAME ASS'Y (E22, E20, E17)	\$49.59	
EX101	1	FILLER CAP ASS'Y (E22, E20, E17)	\$2.77	
F101	1	FILLER CAP (E22, E20, E17)	\$3.62	
F101-B	1	FILLER CAP (EB22, EB20, EB17)(see G397-002)	*	
F105	1	LOCK WASHER	\$.50	
F500	1	CHAMBER PLUG	\$1.94	
F500-0	1	O-RING	\$.50	
F500-1	1	CHAMBER PLUG SLEEVE	\$.50	
F500-2	1	CHAMBER SLEEVE	*	
F503	1	EXHAUST VALVE SPRING(see G397-011)	*	
F504	1	CHAMBER PLUG FACE(see G397-012)	*	
FX500	1	INTAKE VALVE ASS'Y	\$5.22	
FX505-3	1	EXHAUST VALVE ASS'Y	\$3.56	
HB17-009	1	SEAR ASS'Y	\$2.09	
HB17-013	1	TRIGGER	\$.79	
HB17-014	1	TRIGGER PIN	\$.50	

MODELS
 EB17 EB20 EB22
 E17 E20 E22
 PARTS AND PRICE LIST
 NON - CARTRIDGE VALVE

<u>PART NUMBER</u>	<u>QTY PER</u>	<u>PART NAME</u>	<u>COST</u>
HB17-015	1	SEAR PIN	\$.50
HB17-016	1	SAFETY	\$3.35
HB17-017	1	RIGHT HAND GRIP	\$7.21
HB17-018	1	LEFT HAND GRIP	\$7.21
HB17-034	1	STRIKER ASS'Y	\$3.92
HB17-035	1	STRIKER	\$3.18
HB17-036	1	PIN	\$.50
HB17-037	1	RETAINING CAP (EB22, EB20, EB17)	\$4.28
HB17-038	1	MAIN SPRING	\$.50
HB17-039	2	FRAME SCREW	\$.50 each
HB17-041	1	BOLT ASS'Y (EB17, E17)	\$7.08
HB17-042	1	BOLT (EB17, E17)	*
HB17-043	1	BOLT HANDLE	*
HB17-044	1	REAR SIGHT	\$2.21
HB17-045	1	REAR SIGHT SCREW	\$.50
HB17-046	1	CAM FACE	\$.73
HB17-047	1	BOLT LOCKING LUG	\$.50
HB17-048	1	SAFETY SPRING	\$.50
HB20-005	1	BOLT ASS'Y (EB20, E20)	\$7.14
HB20-006	1	BOLT (EB20, E20)	*
HB22-005	1	BOLT ASS'Y (EB22, E22)	\$6.32
HB22-006	1	BOLT (EB22, E22)	*
PB600	1	GRIP FRAME (EB22, EB20, EB17)	\$11.56
PN600	1	GRIP FRAME (E22, E20, E17)	\$25.86
HB17-019	2	GRIP SCREW (new number)	\$.50
H17-004	1	RETAINING CAP (new number)	\$4.59
G397-002	1	FILLER CAP (new number)	\$1.48
G397-011	1	EXHAUST VALVE SPRING(new number)	\$.50
G397-012	1	CHAMBER PLUG FACE (new number)	\$.50
397-058	1	COVER	\$.79

PRICES AND PARTS ARE SUBJECT TO CHANGE WITHOUT NOTICE

PLEASE ORDER BY PART NUMBER AND DESCRIPTION

CHECK OR MONEY ORDER FOR THE TOTAL PRICE MUST
 ACCOMPANY THE ORDER

* NOT AVAILABLE

UPDATED 7/99