



EXPLODED VIEW & PARTS LIST

Models CS1K77A and CS7M77A .177 cal Air Rifles



Manufacture Start Date: 9/14/11

Last Update 3/22/12

CROSMAN CORPORATION
7629 ROUTES 5 & 20
BLOOMFIELD, NY 14469
Phone: 1-800-724-7486
Parts Order Fax: 585-657-5405

www.crosman.com

- This EVP and parts list is intended to be an informational guide in ordering parts. It is not instructional material and we therefore assume no responsibility for those who use the same without proper factory training.
- Please order by part number and description.
- Check or money order for the total price must accompany the order.
- For current prices contact Crosman Corporation at 1-800-724-7486 or visit our website www.crosman.com

PARTS LIST CS1K77A CS7M77A
 Manufacture Start Date: 9/14/11

| PART NUMBER | DESCRIPTION |
|-------------|--|
| 1 | PHA-075 Spring Guide |
| 2 | CRS5177-016 Pin, Plug |
| 3 | CRS5177A011 Spring, Main |
| 4 | CRS5177-030 Assembly, Piston |
| 5 | CRS5177-012 Seal, Piston |
| 6 | CRS5177B010 Spring Guide (CS1K77A) |
| | B5M77-010 Spring Guide (CS7M77A) |
| 7 | CRS5177-031 Assembly, Trigger Pack |
| 8 | CRS5177-027 Stock Lug |
| 9 | CRS5177-015 Screw, Pivot |
| 10 | CRS5177-033 Pin, Detent |
| 11 | 2300-007 Set Screw, 6-32 x 3/16 |
| 12 | CRS5177-042 Assembly, Lever |
| 13 | CRS5177-017 Spacer, Breech |
| 14 | CS1K77A-017 177 Barrel Breech Assy (CS1K77A) |
| | CS7M77A-017 177 Barrel Breech Assy (CS7M77A) |
| 15 | CRS5177-014 Pivot Sleeve |
| 16 | ELS-005 Spring, Detent |
| 17 | CRS5177-034 Detent |
| 18 | CRS5177-061 Pivot Pin, Lever |
| 19 | CRS5177-056 Lever, Beartrap |
| 20 | CRS5177-057 Spring, Beartrap |
| 21 | CRS5177-060 Assembly, Front Sight |
| 22 | CRS5177-052 Rear Sight Bracket |
| 23 | 766-126 Nut, Barrel Band |
| 24 | CRS5177-054 Assembly, Rear Sight |
| 25 | 151-016 Screw, Forearm |
| 26 | 10411 Elevation Screw |
| 27 | 781-040 Spring, Detent |
| 28 | CRS5177A013 O-Ring |
| 29 | CRS5177-043 E-Ring |
| 30 | RS1-021 Compression Tube Assy (CS1K77A) |
| 30 | PHA-021 Compression Tube Assy (CS7M77A) |
| 31 | CRS5177A066 Screw, Stock |
| 32 | CRS5177A069 Stock Brace |

CS1K77A unique parts

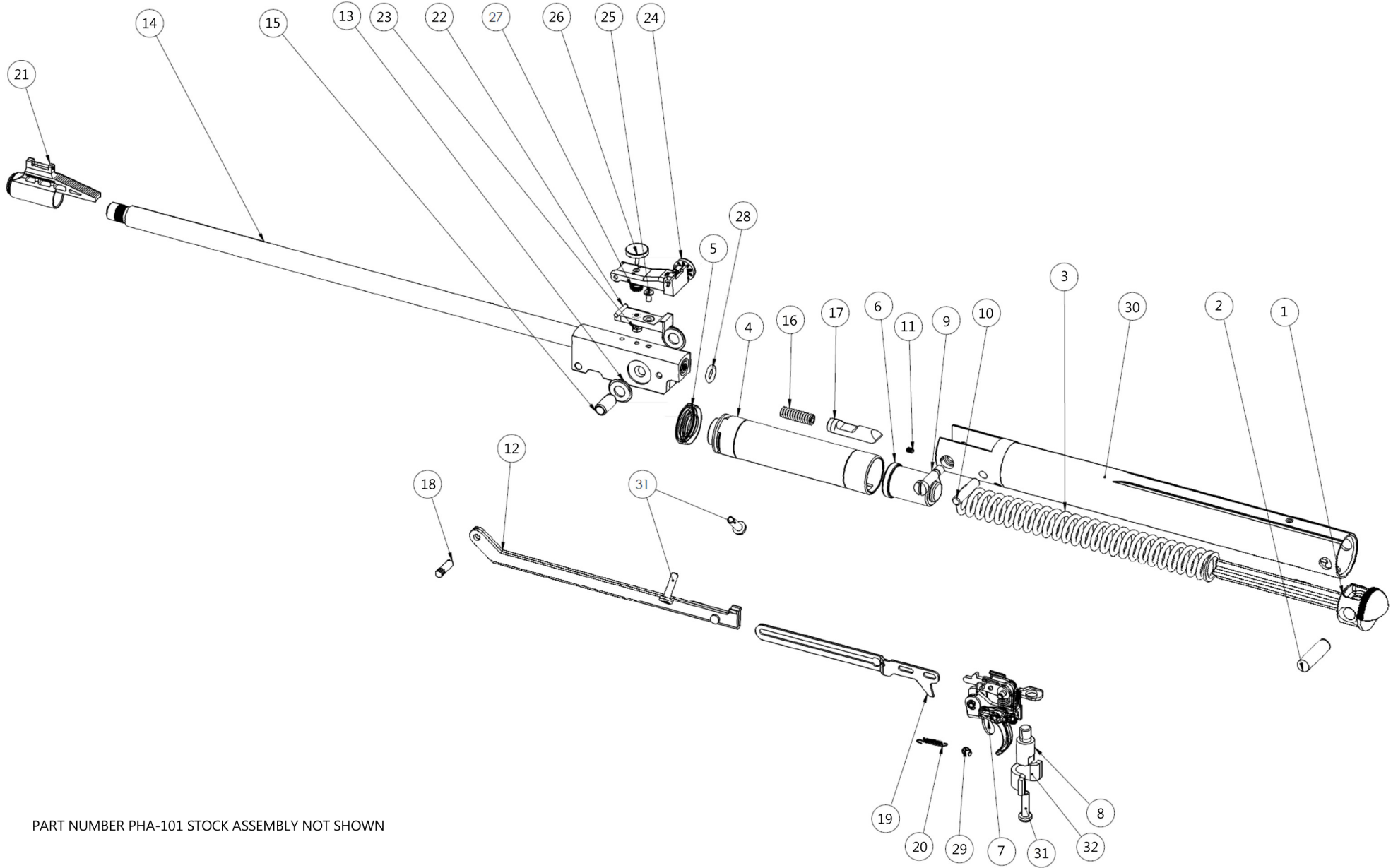
| PART NUMBER | DESCRIPTION |
|-------------|------------------------------------|
| 6 | CRS5177B010 Spring Guide |
| 14 | CS1K77A-017 177 Barrel Breech Assy |
| 30 | RS1-021 Compression Tube Assy |

CS7M77A unique parts

| PART NUMBER | DESCRIPTION |
|-------------|------------------------------------|
| 6 | B5M77-010 Spring Guide |
| 14 | CS7M77A-017 177 Barrel Breech Assy |
| 30 | PHA-021 Compression Tube Assy |

Not Shown

| | |
|---------|----------------|
| PHA-101 | Stock Assembly |
|---------|----------------|



PART NUMBER PHA-101 STOCK ASSEMBLY NOT SHOWN