



EXPLODED VIEW & PARTSLIST

MODEL 1700P SILHOUETTE .177 Cal PCP Pistol



Manufacture Start Date: 2/19/10

Last Update:9/24/10

CROSMAN CORPORATION
7629 ROUTES 5 & 20
BLOOMFIELD, NY 14469
Phone: 1-800-724-7486
Parts Order Fax: 585-657-5405
www.crosman.com

- This EVP and parts list is intended to be an informational guide in ordering parts. It is not instructional material and we therefore assume no responsibility for those who use the same without proper factory training.
- Please order by part number and description.
- Check or money order for the total price must accompany the order.
- For current prices contact Crosman Corporation at 1-800-724-7486 or visit our website www.crosman.com

CROSMAN® 1700P PARTS LIST

Manufacture Start Date: 2/19/10

	PART NUMBER	DESCRIPTION
1	1700-102	Bolt Assembly, .177cal.
2	397-062	Seal, .177 Breech O-Ring
3	1700P-004	Breech
4	1700-008 (4)	Screw, 4-40 X 1.125, SHCS
5	1700-021	Tray, Breech, .177 Pellet
6	1700-022 (2)	Screw, 4-40 X .25, SHCS
7	1763-023 (2)	Set Screw, 8-32 x.250, Flat
8	1700-017	Barrel, 10.1 Match, .177cal.
9	1700-023	Brake, Muzzle
10	88-089	Screw, Set
11	2300-028	Sight Post, Front
12	1700-019	Plate, Bolt Indexing
13	1700-020 (2)	Screw, 3-48 X .188, PPH
14	1700-014	Sleeve, Transfer Port
15	130-036 (2)	Breech Gasket
16	1700-001	Tube, Reservoir
17	1763A036	Striker
18	CH2009-023	Pin, Acetal
19	1700-015	Hammer Pin
20	CH2009A009	Striker
21	1700-018	Stud, Bolt
22	1700-012	Cap, Tube
23	1700-011	Guide, Hammer Spring
24	1700-009	Spring, Hammer
25	NS1200-016	Spring
26	2300-039	Nut, Spring Spacer
27	2300-038	Spring Spacer
28	105-054 (2)	Screw, 6-32, Mach Oval .5
29	1700-029 (2)	Screw, 8-32 X .312, SHCS
30	2300A035	Frame, Trigger
31	2300-042	Set Screw, 8-32 x .250
32	1322A048	Sear
33	1322B044	Cover, Trigger Frame
34	1763-056 (3)	Screw, 4-40 X .312 FHCS
35	1300-017	Trigger, Black
36	111A067	Washer, Spr .280 .133 .052
37	1322-052	Safety,.187 Dia Nylon
38	1322-045 (2)	Pin, Dwl .125DIA .390
39	105-039	Ball, Steel .093 Dia
40	1322-017	Spring, Safety

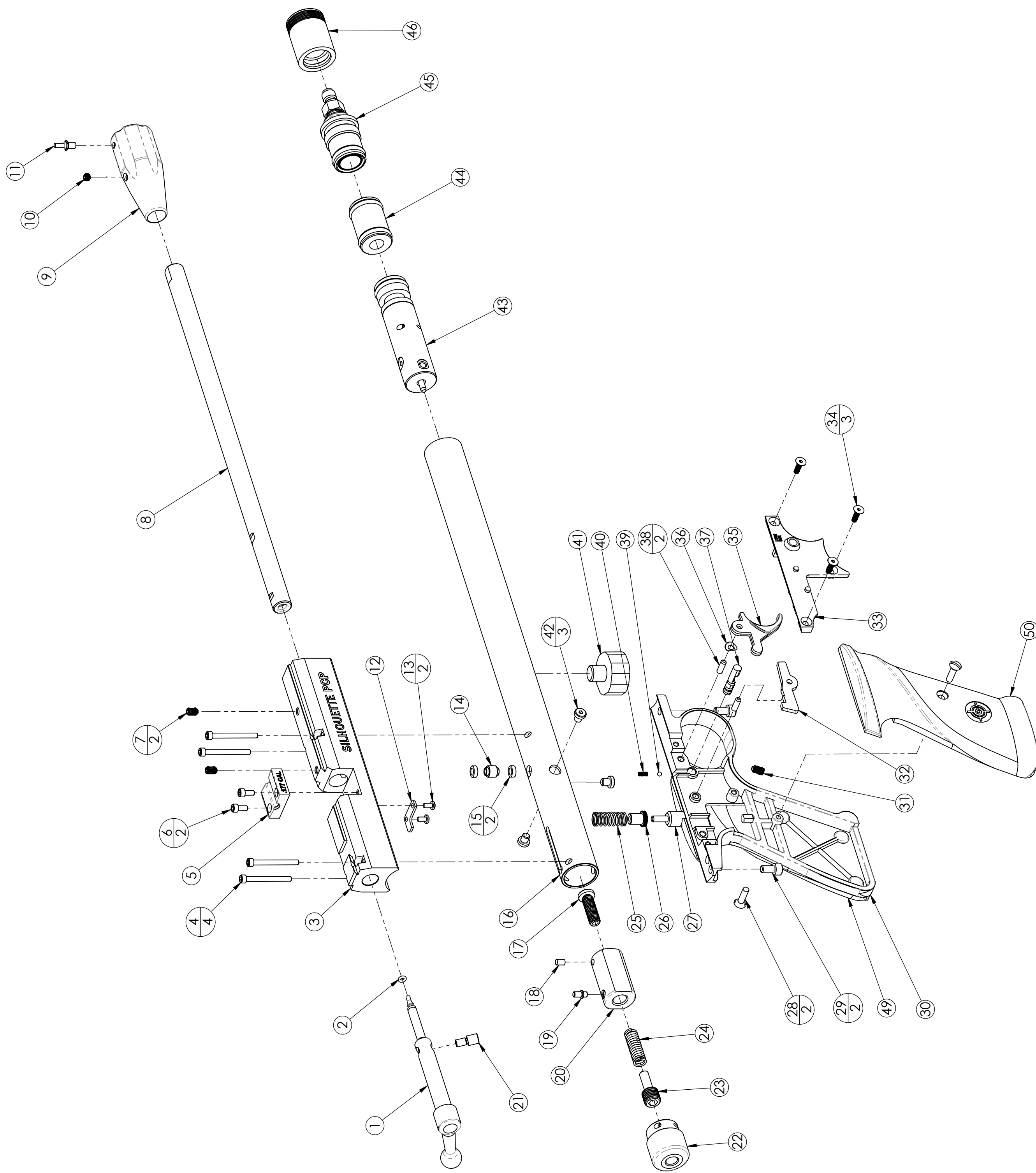
	PART NUMBER	DESCRIPTION
41	1763-033	Gauge, Pressure 3000 PSI
42	1700-010 (3)	Screw,8-32x .188,SHCS
43	1700-100	Valve Assembly (Page 4)
44	1700-104	Gauge Port Asy. (Page 5)
45	1700-101	Fill Adapter Asy. (Page 4)
46	1761-102	Cap Assembly (Page 5)
47	151-020	Grip, Left Hand
48	151-019	Grip, Right Hand
49	1700-031	Grip, Left
50	1700-032	Grip, Right

Notes:

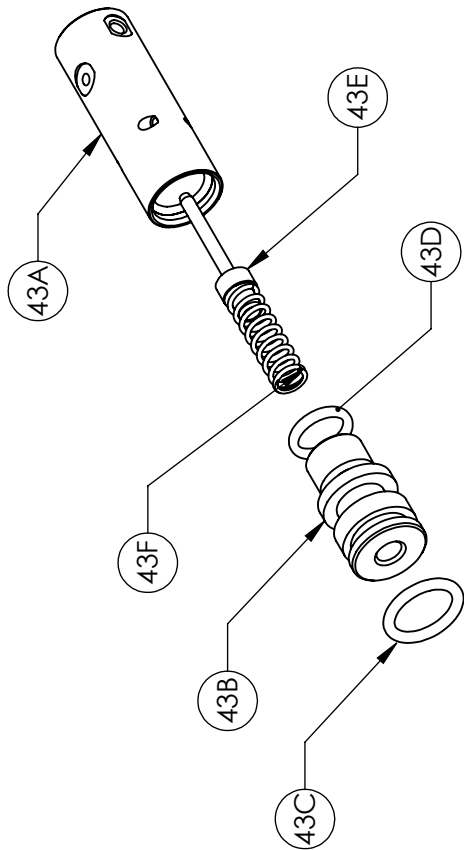
Grip items 47 and 48 are not shown in drawing.

Grip items 49 and 50 will not be available until October/November 2010

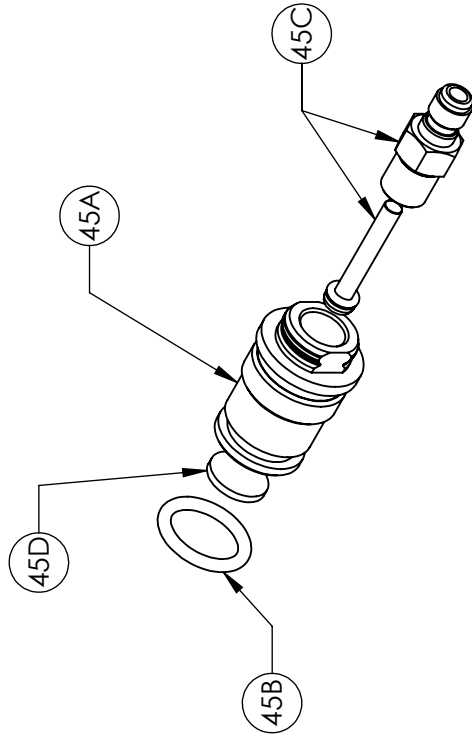
Last Update:9/24/10



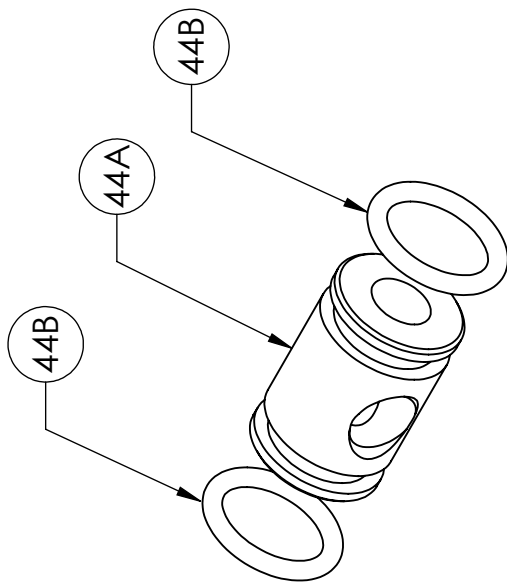
CROSMAN MODEL 1700P SILHOUETTE PCP PISTOL



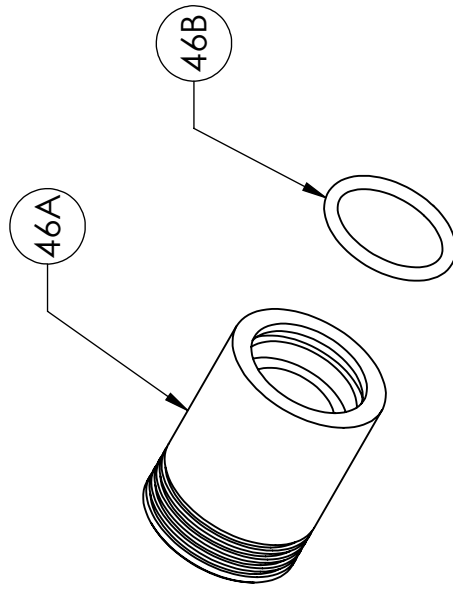
ITEM 43, VALVE ASSEMBLY			
ITEM NO.	PART NUMBER	DESCRIPTION	QTY.
43A	1700-002	VALVE BODY	1
43B	1700-003	VALVE CAP	1
43C	1700A005	O-RING, AS568B -113, 80 D	1
43D	130-035	O-RING	1
43E	1700-140	VALVE STEM, OVERMOLDED	1
43F	1763-034	SPRING, VALVE	1



ITEM 45, FILL ADAPTER ASSEMBLY			
ITEM NO.	PART NUMBER	DESCRIPTION	QTY.
45A	1700-013	HOUSING, FILL ADAPTER	1
45B	1700A005	O-RING, AS568B -113, 80 D	1
45C	1761-106	NIPPLE, ADAPTER	1
45D	NS1200-047	SINTERED FILTER	1



ITEM 44, GAUGE PORT ASSEMBLY			
ITEM NO.	PART NUMBER	DESCRIPTION	QTY.
44A	1700-016	PORT, GAUGE	1
44B	1700A005	O-RING, AS568B -113, 80 D	2



ITEM 46, FILL CAP ASSEMBLY			
ITEM NO.	PART NUMBER	DESCRIPTION	QTY.
46A	1761-011	CAP, ADAPTER	1
46B	1761-005	O-RING, AS568-016	1