

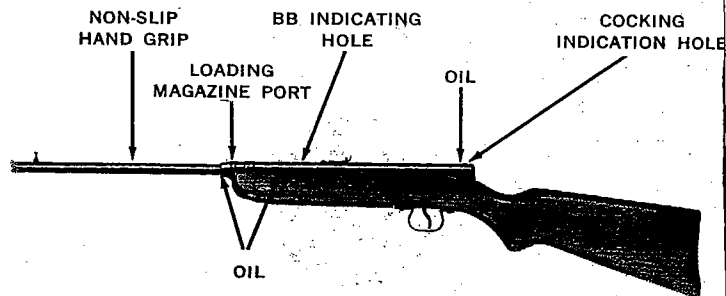
## MODEL V-350

### Slide Action BB Air Rifle Operating Instructions

Read all instructions carefully before operating your gun.

#### Always Follow These Simple Safety Rules:

1. Treat every gun as if it is a loaded gun.
2. Always keep muzzle of gun pointed in a safe direction.
3. Don't point at anything you don't intend to shoot.
4. Be sure of your target and your backstop.
5. Conduct yourself as a true sportsman in using your gun.



#### OILING POINTS



**Crosman**



**V-350**  
Owner's Manual

### TO LOAD RIFLE WITH BB'S:

Be sure gun is not cocked while loading by pointing it in a safe direction, and pulling the trigger to fire rifle. Then, pour BB's into loading magazine port. For trouble free operation and more accurate shooting use Crosman Super BB's.

### TO SHOOT RIFLE:

With muzzle slightly elevated, place hand on barrel over non-slip hand grip (identification name) and slide barrel to rear as far as it will go. (CAUTION—DO NOT have finger on trigger or over muzzle end of barrel while cocking.) Slide barrel forward to extreme full length. (Must be fully extended and locked.) CAUTION: DO NOT slam barrel forward when returning to locked position as this will cause BB to override BB retainer and fall out of barrel. Take aim, squeeze trigger to shoot. Loaded chamber can be checked thru BB indicating hole. Rifle can be checked for cocked position thru cocking indication hole. (Rifle is cocked when hammer is visible.)

### TO ADJUST REAR SIGHT:

**Windage:** Loosen both rear sight screws counterclockwise. This will free rear sight allowing it to be moved right or left until proper sight adjustment has been reached. Retighten rear sight screws.

**Elevation:** Move rear sight elevator towards breech to raise sight, to lower sight, raise rear sight slightly and at the same time push sight elevator towards muzzle.

### LUBRICATION:

Lubricate all moving parts and thru BB indicating hole and cocking indicating hole. Oil sparingly with three or four drops of oil at each oiling point when parts appear dry. For best results use Crosman Special Pellgunoil®. Never use penetrating or detergent type oil as they may be harmful to valve seals.

### REPAIR SERVICE:

It is not necessary for your dealer to replace your gun. Your Crosman gun can be serviced at one of the authorized Crosman Service Stations shown on the attached list. Do not return gun to factory without written permission.

Our service stations are equipped to make warranty repairs on Crosman guns, within the ninety (90) day warranty period. Guarantee Certificate must be properly filled out, and accompany your gun in order to qualify for service.

Warranty is void if gun has been disassembled or, in the judgement of the service station, has been abused or misused. Include a description of the malfunction with gun.

### CROSMAN "TARGLITE"®

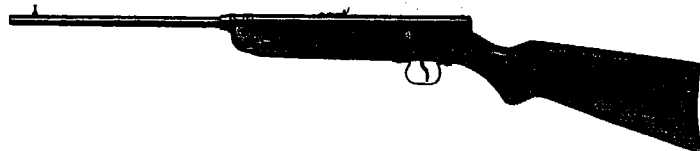
**MODEL 209.** Crosman's popular Remote Control Targlite® is a lighted target. Vivid backlighting spots hits from line of fire. Remote control pulley and cord sends paper targets to and from Targlite® in seconds; no one has to cross firing line. Rugged sheet steel traps all pellet ammo. Portable. Convenient. Ideal for indoor Pellgun ranges in schools, Scout rooms, garages, factory recreation rooms, homes. (Paper target inserts; 500 to pack per prices listed above.)

**Suggested U.S. Retail Price: \$19.95.**



---

# **Crosman V-350**



## **SPECIFICATIONS**

**Mechanism:** Slide Action Barrel Cocking

**Caliber:** BB

**Magazine Capacity:** 22 Crosman Super BB's

**Weight:** 3 lbs. 7 ozs.

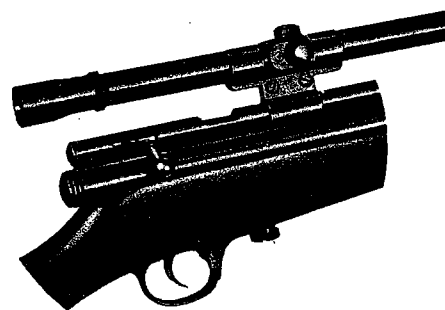
**O/A Length:** 34 $\frac{3}{4}$ "

**Sights:** Adjustable Rear Sight

**Barrel:** Heavy Duty Solid Steel

**Stock:** Sports Style Hardwood

**Finish:** Gun Blue



## **MASTER MOUNT and SUPERSCOPE**

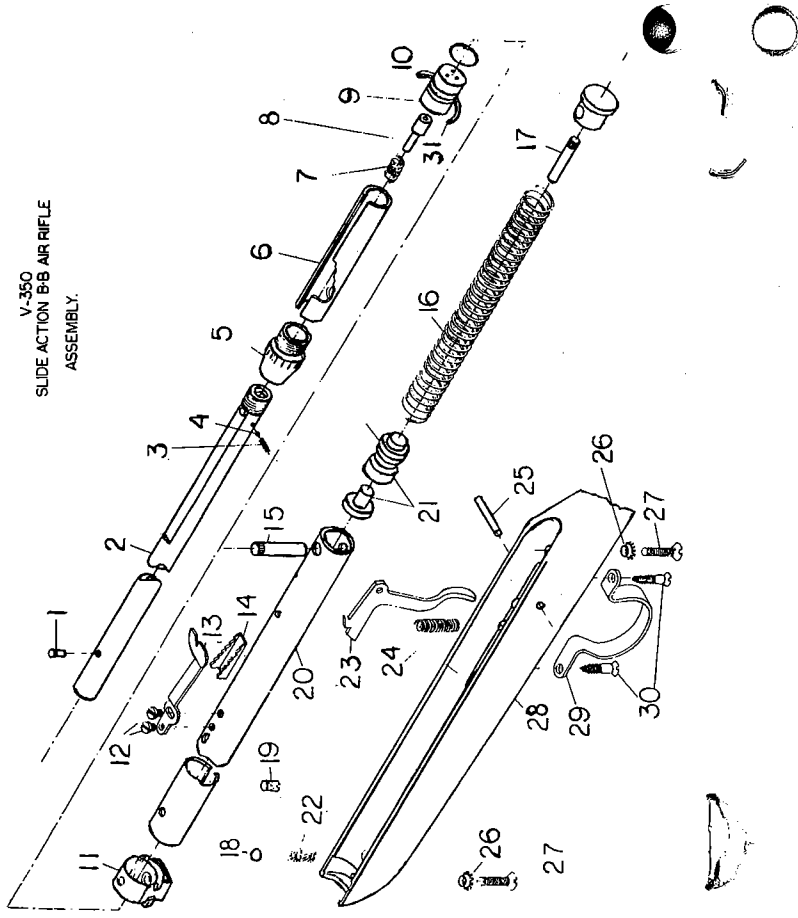
Model 410 fits this gun and all other Crosman Rifles

Model 499 fits 99 Rifle

4 power—nitrogen filled, adjustable reticles, focusing eye-piece. Requires only a screwdriver to mount.

---

V-350  
SLIDE ACTION BB AIR RIFLE  
ASSEMBLY.



LIST OF PARTS AND ASSEMBLIES - MODEL V-350

Ref. No.	Part No.	Part Name	Price	Ref. No.	Part No.	Part Name	Price
1	V350-38	Front Sight	.25	17	V350-35	Tube Plug and Stop Assembly	\$.70
2	V350-2	Barrel	6.30	18	V350-16	Barrel Lock Ball	.15
3	V350-41	Ball Spring	.10	19	V350-10	Guide Screw	.15
4	V350-42	Ball	.10	20	V350-1	Tube	3.90
5	V350-3	Tube Bearing	.45	21	V350-36	Hammer and Piston Assembly	2.50
6	V350-8	Spacer	.40	22	V350-24	Barrel Lock Spring	.10
7	V350-12	Valve Spring	.10	23	V350-15	Trigger	.40
8	V350-5	Pop Valve Assembly	.55	24	180-65	Trigger Spring	.20
9	V350-4	Barrel Cap	.60	25	V350-18	Trigger Pin	.10
10	V350-27	No. 11 "O" Ring	.15	26	160-37	Countersunk Lock Washer	.10
11	V350-13	Clamp	.40	27	V350-19	Stock Screw	.10
12	110-35	Sight Screw	.10	28	V350-31	Stock	5.65
13	V350-23	Rear Sight	.15	29	160-18	Trigger Guard	.20
14	160-21	Rear Sight Elevator	.15	30	160-30	Trigger Guard Screw	.10
15	V350-9	Locating Stud	.30	31	V350-33	Felt	.10
16	V350-25	Piston Spring	.40				

Minimum parts order \$.50.

Prices subject to change without notice. Check or money order in the amount of total purchase must accompany parts order. Parts will be shipped prepaid.