

BENJAMIN SHERIDAN EXPLODED VIEW

& PARTSLIST

C9 Silver Streak CB9 Blue Streak .20 Cal Pneumatic Air Rifles



CROSMAN CORPORATION
RT 5 & 20
EAST BLOOMFIELD, NY 14443
Phone: 1-800-724-7486
Parts Order Fax: 585-657-5405
www.crosman.com

C9 & CB9 Parts List
 Manufacture Start Date: 2/17/03

	PART NUMBER	DESCRIPTION
1	CB9-004	Barrel Assembly (CB9)
	C9-001	Barrel Assembly (C9)
2	397-026	Base Grip
3	397-027	REAR SIGHT ASSEMBLY
3a	397-029	Sight Arm
3b	397-031	Windage Screw (2x)
3c	397-028	Sight Base
4	397-030	Screw, Sight Elevation
5	397-061	Screw
6	CB9-015	Breech Seal
7	397-044	Lug, Bolt Locking
8	CB9-009	Bolt Assembly
9	397A032	VALVE ASSEMBLY
9a	JTX-080	O-Ring
9b	397-037	O-Ring
9c	1322-056	Check Valve
9d	397-035	Spring
9e	397-038	Exhaust Valve Assembly
9f	397-036	O-Ring
9g	397A034	Inlet Valve Body
9h	397A063	Exhaust Valve Body
10	G397-019	Striker
11	2200A032	Spring, Striker
12	397-046	TRIGGER ASSEMBLY
12a	38-117	Screw (2x)
12b	397A048	Trigger Case, Right
12c	397A052	Spring, Sear
12d	397-051	Sear
12e	760A017	Safety
12f	397-047	Trigger Case, Left
12g	766-091	Spring
12h	397-049	Trigger
12i	397-050	Pin
13	CB9A011	Stock Assembly
14	397-060	Cam Face
15	397-058	Cover, Cam Face
16	397-059	Screw, Cam Face (2x)
17	397-041	Screw
18	397-042	Stock Lug
19	397-025	Piston, Rubber

	PART NUMBER	DESCRIPTION
20	397A020	Piston Rod Assembly
21	10804	Dowel Pin
22	397A001	Muzzle Cap, Black
23	397-002	Muzzle Cap Pin (2x)
24	CB9B002	FOREARM ASSEMBLY
24a	397A004	Lever, Link Assembly
24b	CB9B003	Forearm
24c	HB17-026	Forearm Bumper
24d	397-005	Forearm Pin
25	397-064	Guide Pin

● This parts list is intended to be an informational guide in ordering parts. It is not instructional material and we therefore assume no responsibility for those who use the same without proper factory training.

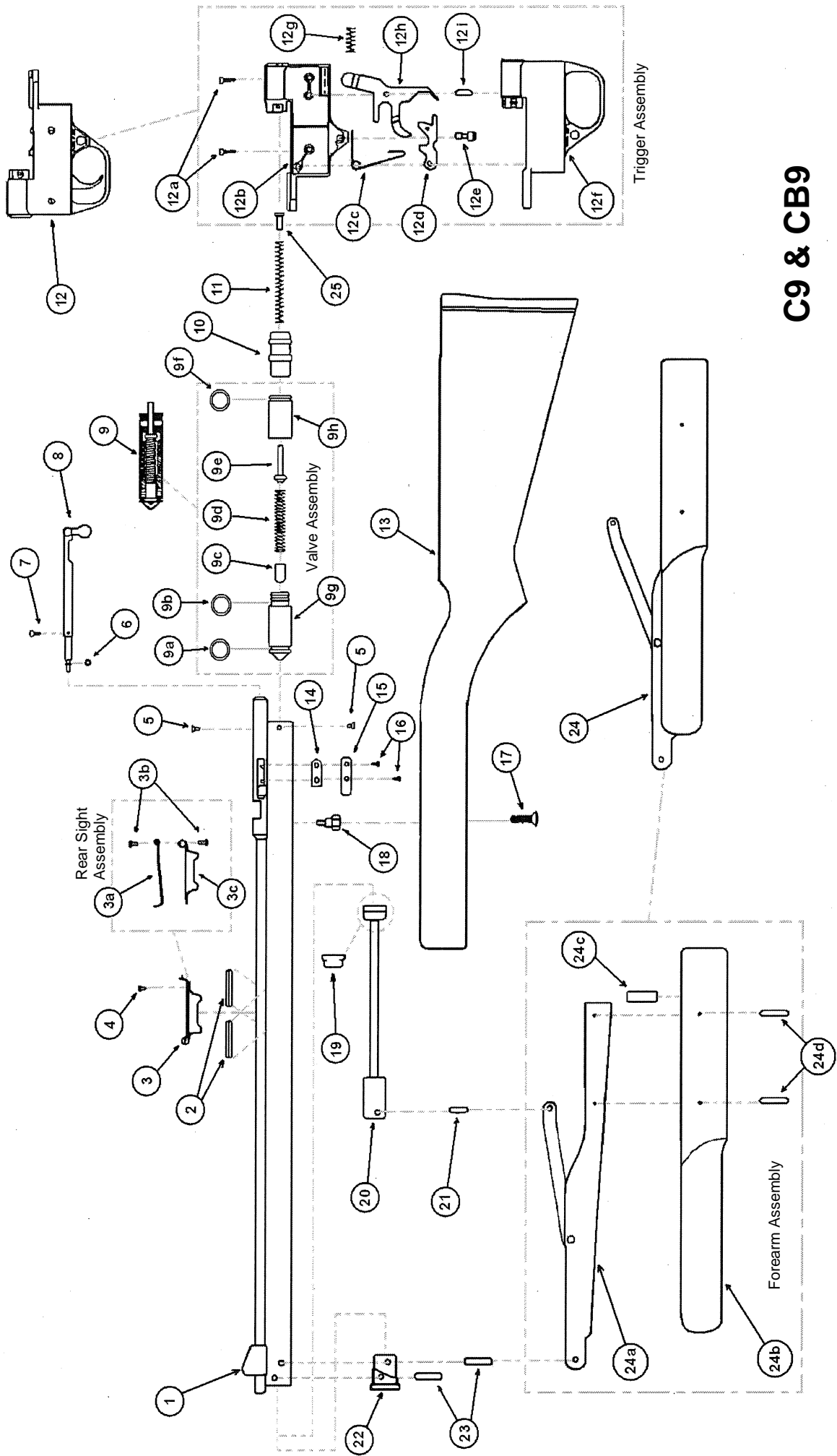
● Please order by part number and description.

● Check or money order for the total price must accompany the order.

● For current prices contact Crosman Corporation at 1-800-724-7486 or visit our

website www.crosman.com

Updated:6/15/09



C9 & CB9