



# Exploded View Parts List

## Super Streak Series

B1500BTM / B1500STM

.177 (4.5mm) Caliber

AND

B1122BTM

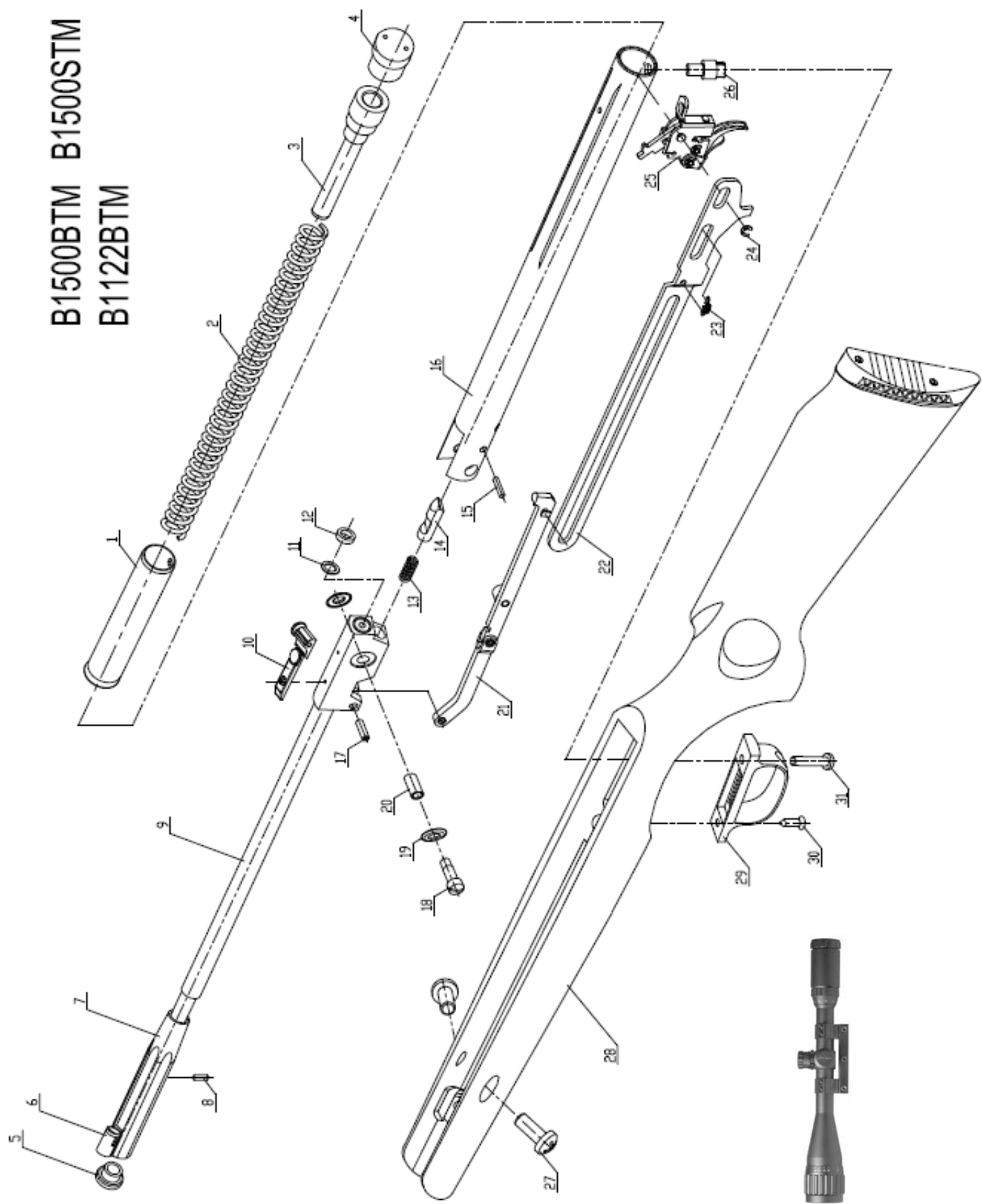
.22 (5.5mm) Caliber

Crosman Corporation  
7629 Routes 5 & 20  
East Bloomfield, NY 14443

Phone: (800) 724-7486  
Parts Order Fax: (585) 657-5405

[www.crosman.com](http://www.crosman.com)

B1500BTM B1500STM  
B1122BTM



<u>Item Call Out</u>	<u>Part #</u>	<u>Description</u>	<u>B1500BTM</u>	<u>B1500STM</u>	<u>B1122BTM</u>
1	B22-04-00	Piston Assembly	1	1	1
2	B22-00-7	Piston Spring	1	1	1
3	B22-00-6	Back Spring Guide	1	1	1
4	B22-00-5	Tube Cover	1		1
	B22-00-5	Tube Cover (nickel-plated)		1	
5	B22-00-2	Muzzle Break Cover	1	1	1
6	B22-07-00	Front Sight	1	1	1
7	B22-00-3	Muzzle Break	1	1	1
8	GBT78-2000-M5x6	Muzzle Break Screws	1	1	1
9	B22-01-100	Barrel Assembly	1		
	B22-1-D-01-100	Barrel Assembly (nickel-plated)		1	
	B22-1-A-01-100	Barrel Assembly (.22 Cal)			1
10	B20-02-00	Rear Sight	1	1	1
11	B22-00-1	Adjust Washer	0-3	0-3	0-3
12	B20-00-3	Breach Seal	1	1	1
13	B12-01-2A	Jam Spring	1	1	1
14	B22-01-1	Alive Jam	1	1	1
15	B22-00-9	Detent	1	1	1
16	B22-03-00	Compression Tube Assembly	1		1
	B22-1-D-03-00	Compression Tube Assembly (nickel-plated)		1	
17	B22-00-11	Link Pin	1	1	1
18	B22-00-12	Break Bolt	1		1
	B22-1-D-00-12	Break Bolt (nickel-plated)		1	
19	B18-00-15A	Washer	1	1	1
20	B22-01-4	Bushing	1	1	1
21	B22-02-00	Lever Assembly	1	1	1
22	B22-00-10	Bear Trap Lever	1	1	1
23	B18-00-12A	Safety Spring	1	1	1
24	GBT-896-1986-3	"E" Ring	1	1	1
25	B22-06-00	Trigger Pack Assembly	1	1	1
26	B18-00-9	Stock Link Pin	1	1	1
27	GBT-818-2000-M6x12	Pan Head Screws	1	1	1
28	B22-1-A-01-00	Stock and Butt Plate	1	1	1
29	B18-00-11A	Trigger Guard	1	1	1
30	GB847-85-ST3-5x16	Screw, Trigger Guard Front	1	1	1
31	GB823-88-M6X20	Screw, Trigger Guard Rear	1	1	1
32	CPA416AORG-999	4-16x40mm AO/RG Scope w/ 1pc Rings	1	1	1

For Current Pricing Contact Crosman Customer Service at (800) 724-7486.

This parts list is intended to be an informational guide in ordering parts. It is not instructional material and we therefore assume no responsibility for those who use without proper factory training.

Please order by part number and description.

Check or money order for the total price must accompany the order.

Updated 1/26/09.