

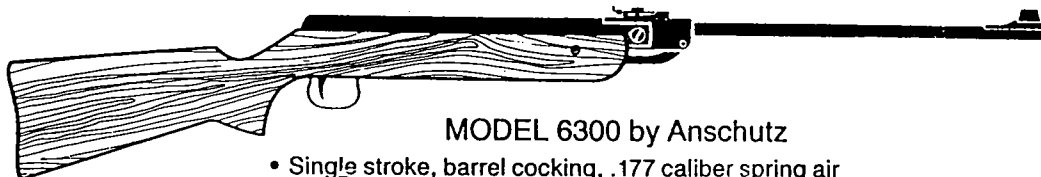
# Crosman<sup>®</sup> AirGuns

#1 IN AMERICAN AIR POWER! A Coleman Company



## EXPLODED VIEW, PARTS AND PRICE LIST

CROSMAN AIRGUNS  
**Challenger<sup>®</sup>**  
THE WORLD-CLASS AIRGUN

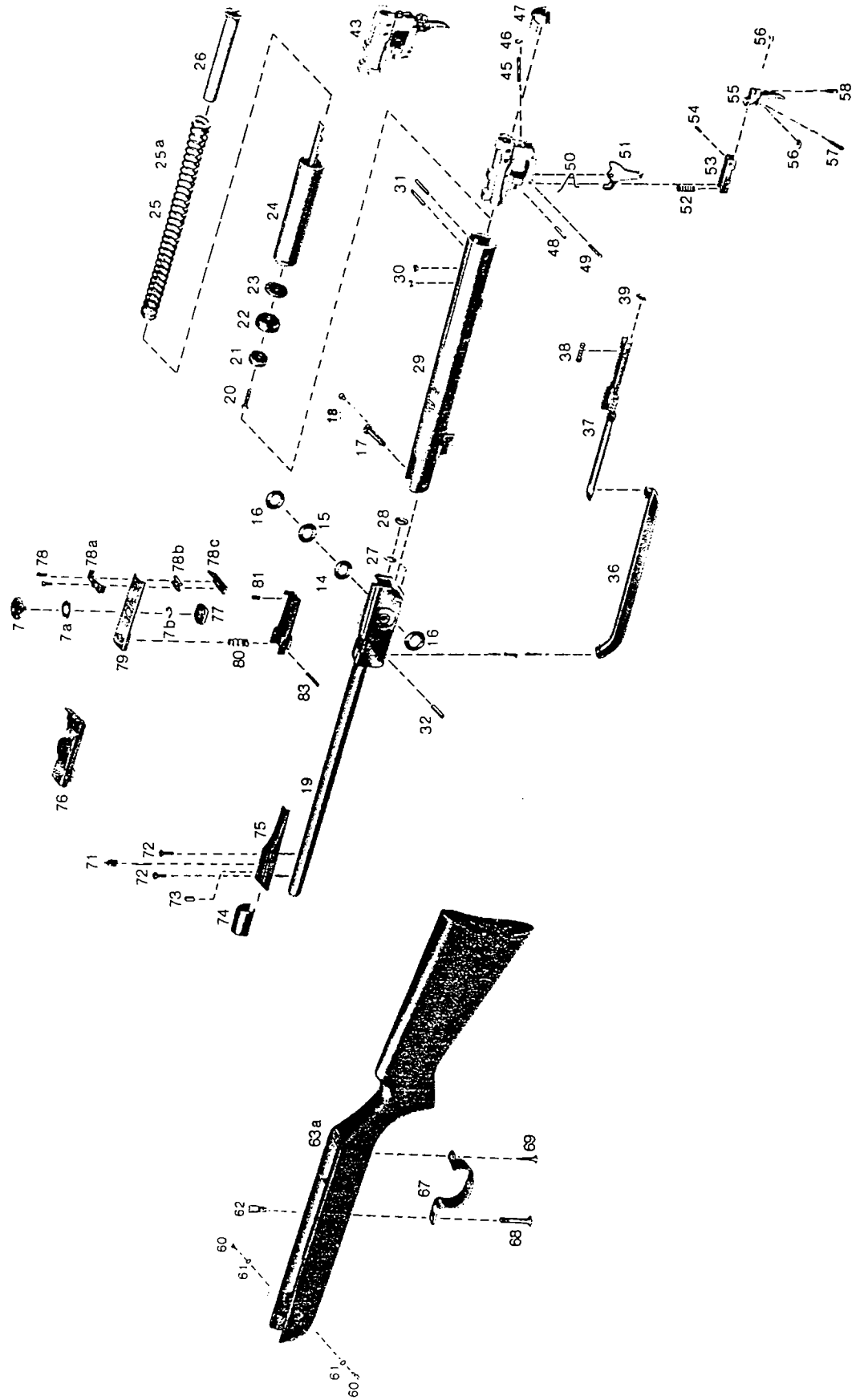


MODEL 6300 by Anschutz

- Single stroke, barrel cocking, .177 caliber spring air
- Anschutz rifled steel barrel
- Finely balanced, hardwood stock
- Hooded front sight—micrometer rear sight
- 690-720 fps

This parts and price list is intended to be an informational guide in ordering Crosman parts. It is not instructional material and we therefore assume no responsibility for those who use same without proper factory training.

Model 6300



MODEL o300

<u>PART #</u>	<u>DESCRIPTION</u>	<u>PART #</u>	<u>DESCRIPTION</u>
6300-019	Barrel	6500-024	Piston Complete
6300-029	Compression Tube	6500-025	Main Spring(Long Range)
6300-63A	Stock	6500-25A	Main Spring (Target)
6300-067	Trigger Guard	6500-026	Main Spring Sliding Tube
6300-071	Bead Front Sight	6500-027	Spacer Ring
6300-072	Front Sight Screw (2)	6500-028	Sealing Ring
6300-073	Front Sight Lock Plug	6500-030	Plug (3)
6300-074	Front Sight Hood	6500-031	Trigger Holding Pin (2)
6300-075	Front Sight Base	6500-032	Cocking Lever Pin
6300-076	Rear Sight Assembly	6500-036	Cocking Rod
6300-077	Elevation Screw Nut	6500-037	Trigger Safety Lever
6300-078	Rear Sight Screw (2)	6500-038	Trigger Safety Lever Spring
6300-78A	Indicator	6500-039	Safety Lever Spring Plate
6300-78B	Rear Sight Spacer	6500-043	Trigger Assembly Complete
6300-78C	Rear Sight Blade	6500-045	Sear Adjusting Screw
6300-079	Rear Sight Flap	6500-046	Sear Adjusting Screw Nut
6300-080	Rear Sight Elevation Spg.	6500-047	Rear Tube Cap
6300-081	Rear Sight Base Elevation Screw	6500-048	Sear Pivot Pin
6300-083	Rear Sight Pin	6500-049	Latch Pivot Pin
6500-007	Rear Sight Elevation Screw	6500-050	Sear Pivot Spring
6500-07A	Elevation Screw ClickSpring	6500-051	Sear
6500-07B	Elevation Screw Retainer	6500-052	Trigger Spring
6500-014	Barrel Washer	6500-053	Sear Latch
6500-015	Barrel Washer	6500-054	Sear Latch Pivot Pin
6500-016	Barrel Spring Washer (2)	6500-055	Trigger
6500-017	Barrel Pivot Screw	6500-056	Trigger Screw Lock Nut (2)
6500-018	Barrel Pivot Lock Screw	6500-057	Trigger Set Screw
6500-020	Piston Cup Screw	6500-058	Trigger Creep Screw
6500-021	Buffer	6500-060	Front Stock Screw (2)
6500-022	Piston Seal	6500-061	Front StockScrewLockWasher(2)
6500-023	Piston Washer	6500-062	Rear Stock Screw Spacer
		6500-068	Locating Stock Screw
		6500-069	Trigger Guard Screw