

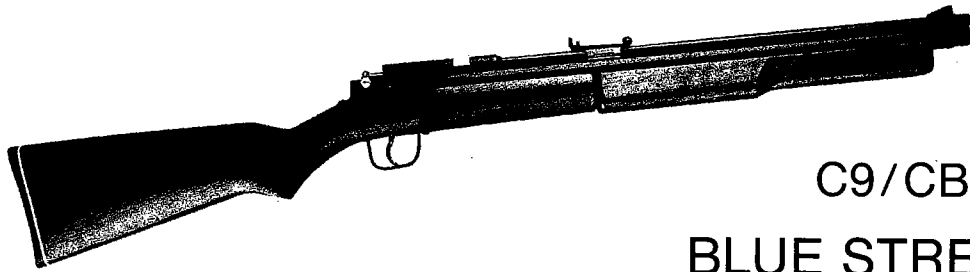
C

# SHERIDAN PRODUCTS

2600 CHICORY ROAD  
RACINE, WISCONSIN 53403

**IT IS RECOMMENDED THAT  
SAFETY OR SHOOTER'S  
GLASSES BE WORN**

NOT A B-B GUN



C9/CB9 Series

**BLUE STREAK  
SILVER STREAK  
.20 CALIBER**

Serial Number \_\_\_\_\_

UPON CHANGE OF OWNERSHIP  
TRANSFER THIS MANUAL WITH GUN.

**⚠ WARNING:** NOT A TOY.

ADULT SUPERVISION REQUIRED. MIN. REC.  
AGE 16 YRS. MISUSE OR CARELESS USE MAY  
CAUSE SERIOUS INJURY OR DEATH. MAY BE  
DANGEROUS UP TO 400 YARDS (360 METERS).

# PARENTS KEEP OUT OF REACH OF CHILDREN

## CAUTION:

This manual contains essential instructions for safe charging, loading, use and maintenance of your new Sheridan Pneumatic rifle. If you follow these instructions, you can be sure to enjoy a lifetime of its use.

Use this rifle with respect for yourself and others. Never, under any circumstance, tamper with or alter the factory adjustments on the trigger, sear, safety, or any other part which may affect safe operation.

## SAFETY PRECAUTIONS:

Never point your rifle, charged or uncharged, loaded or unloaded, with safety on or off, at or near anything you do not intend to shoot. Too many accidents have occurred with guns that were supposed to be empty or on safe.

Never shoot at anything without a safe background; a miss could let your pellet carry past the intended target and hurt someone or damage something far beyond it.

Never lean your rifle against a car, fence or any other movable object that could cause the rifle to fall.

Don't store your rifle loaded.

## RESPECT LIFE/RESPECT PROPERTY

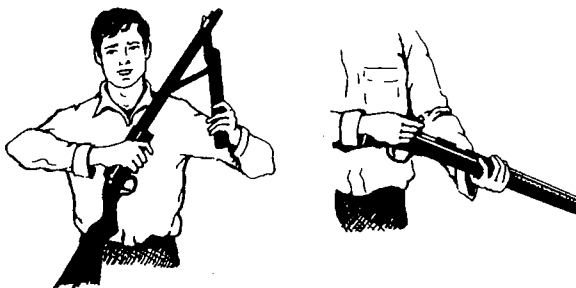
Never allow others to use or inspect your rifle without first instructing them in the fundamentals of safe use. For everyone's protection, stress keeping the muzzle pointed in a safe direction at all times. Inform them of any other common sense rules of safety which the situation may require.

### CHARGING:

Hold the rifle almost against your chest with muzzle pointed nearly straight up, (see sketch). Raise lever to full length of stroke and push down smartly USING HEEL OF HAND. Always pump with full, even strokes to insure consistent velocity. Hesitate for a second at the top of each stroke to insure that the intake hole is wide open. RECOMMENDED MINIMUM CHARGE IS THREE PUMPS. MAXIMUM IS EIGHT PUMPS.

### COCKING:

OPEN BOLT. (See sketch above). Hook first finger over bolt handle and pull back hard (approximately 3/4") until the trigger sear engages on the second click and the bolt stays back. BE SURE TO PUT RIFLE ON SAFETY IMMEDIATELY THEREAFTER. Safety must be off before cocking rifle.



### OPERATION OF SAFETY:

To put gun on safe "S" cock bolt (see Cocking) pull safety back with thumb until "S" appears gun is now on safe. Push safety in the "S" will disappear and the gun is ready to fire.

#### LOADING:

With bolt open, place pellet, nose forward in breech of barrel. Lightly push into barrel by closing and locking bolt, jamming hard will soon cause looseness and power loss. If this occurs refer to the section on blowback. **BE SURE BOLT IS CLOSED BEFORE FIRING.**

#### WARNING

The following is a list of reasons that could cause a pellet to remain in the barrel after loading and firing: Insufficient or no pumping, bolt is not closed, pellet is deformed or wrong size, foreign matter is obstructing the bore, or you may have a dented barrel.

If a pellet should remain in the barrel after attempting a shot, re-cock the action and put the gun on safe. (see page 2). Be very careful where gun is pointed.

Take a cleaning rod of proper size, (see page 8, cleaning rod is obtainable from factory) and insert the rod in muzzle end of the gun barrel. Gently push the cleaning rod down the gun barrel. The jammed pellet should appear in the pellet loading port (forward of bolt). Discard the pellet. Remove the cleaning rod and inspect gun barrel.

#### SIGHTING:

In target shooting it is common practice to "sight-in" at the bottom of the bull's eye, or at six o'clock so that one sees the black sights against the white of the target, although the point of impact is in the center of the bull.

For hunting, sights should be set for point of impact of the average shooting distance.

Because of the differences among users, it is not possible to sight-in rifles at the factory. To change windage, (left-right) the blade pulls over to the side on which the forward round head screw is being tightened. **BE SURE TO LOOSEN OPPOSITE SCREW FIRST.** To sight-in you move the rear sight in the same direction you desire the point of impact to move. If you're shooting low, raise the rear sight, thereby raising point of impact.

Aperture  
Sight



Open  
Sight

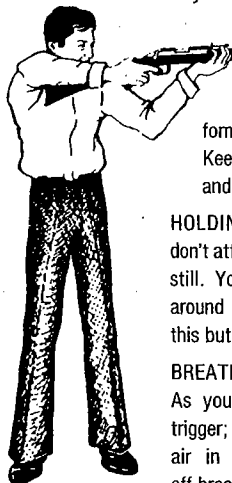


#### THE A B C'S OF RIFLE SHOOTING

#### POSITION:

Stand erect with weight equally distributed on both feet. The

feet should be comfortably apart and the body at a forty-five degree angle to the line of fire. Your left arm should be about half way extended and well underneath the



rifle. Keep your right arm as near shoulder high as possible, to form a cup or base for the butt stock. Keep your cheek down on the stock and comfortably forward.

#### HOLDING:

don't attempt to hold your rifle absolutely still. You will move and sway slightly around the bull's eye. Relax, and allow this but concentrate on minimizing it.

#### BREATHING:

As you steady, begin to squeeze the trigger; with a comfortable amount of air in your lungs, momentarily shut off breathing.

#### TRIGGER CONTROL:

As you are ready to fire, you will sway up, down and from side to side near the bull. On one of these passes begin to apply slow, slight pressure with your trigger finger. If your aim wanders, hold the pressure you have gained on the trigger until you obtain the proper "sight-picture". On one of these easy gentle squeezes, the sear will let go and the gun fire. If you follow these steps you should have a good shot. **NOTE:** It is almost impossible to squeeze a trigger too lightly and a proper squeeze can only be learned through practice.

#### MISCELLANEOUS

#### CARE OF RIFLE:

Except for normal lubrication, the Sheridan Pneumatic requires little care. Both the barrel and action tube are made of rust proof, hard, non-ferrous alloy and require no special treatment. Other exterior metal surfaces should be wiped with a lightly oiled cloth after each use.

#### LUBRICATION:

In lubricating your Sheridan Air Rifle, use our #088 Pellet Gun Oil or a standard household utility oil. **DO NOT USE GUN OIL OR ANY OTHER OIL WHICH**

**CONTAINS SOLVENTS.** The following parts of your rifle should occasionally be oiled LIGHTLY, (one or two drops). The crosshead or front of the piston rod bearing (CX201-A). Apply oil on top of the bearing itself and through the long slot into the bottom of the pump tube under the crosshead. The spring (C207A), in the long pump lever slot. Apply oil at the point where the end of the toggle link (C209) contact the spring. The toggle link bearing pin (pin joining toggle like and pump lever)(C208).

**AIR LOCK:**

This condition occurs when the charge in the compression chamber can not be completely exhausted with one shot. It occurs because the rifle was charged in excess of eight pumps. It can usually be corrected by repeatedly cocking and shooting the rifle. **WITHOUT LOADING OR PUMPING.** Remember, **MAXIMUM RECOMMENDED CHARGE IS EIGHT PUMPS.**

**FOREND SLAP:**

The forend stop (C802) can be shimmed out slightly if it ever compresses to the point that it slaps. Do not mistake noise caused by temporary hardening of the rubber in cold weather for

this slap.

**RECOMMENDED AMMUNITION:**

Use Sheridan or other high quality .20 caliber (5mm) ammunition. Do not use BB's, shot, reclaimed pellets or any other object. Use of any projectiles other than Sheridan or other high quality .20 caliber ammunition is unsafe and may damage your rifle.

**ACCURACY:**

If accuracy falls off, run a lightly oiled, firm-but free fitting patch through the barrel to insure a clean bore. Be sure to use a cleaning rod of proper size that will not damage the lands.

**DRY SNAPPING:**

This is the common method among serious target shooters of practicing with an empty rifle, **DON'T DO IT WITH YOUR SHERIDAN.** An occasional snap won't hurt but a steady pounding is not recommended.

**TAKEDOWN AND DISMANTLING:**

The Sheridan Air Rifle can be taken down for transport by removing the receiver screw (C302). Further dismantling is not recommended.

**SERVICE AND REPAIRS:**

In the interest of time and cost, YOU should send your rifle to the factory for any necessary service or repair. Pack it as carefully as possible and **INSURE IT FOR FULL VALUE.** Your note as to the trouble or damage involved and cause of same, if known, will be helpful. You will always find Sheridan in Factory Service fair and fast. **NOTE:** Sheridan rifles do not come under the provisions of the "Gun Control Act of 1968" and can be shipped via UPS and Parcel Post.

**STATEMENT OF LIABILITY:**

This rifle is delivered by us with the express understanding that we assume no liability for its resale or safe-handling. It can be considered as a dangerous weapon if mishandled, abused, instructions are ignored, or factory adjustments tampered with. Sheridan assumes no responsibility for physical injury or property damage resulting from its use. We will honor no claims for damage to the rifle resulting from careless handling, unauthorized adjustments, ignoring of instructions, improper ammunition, neglect, or resulting from any part or parts being altered or tampered with.

**LIMITED WARRANTY:**

Benjamin Air Rifle Company, manufacturer of Sheridan Rifles, warrants to the original consumer-purchaser that such rifle is free from defects in material and workmanship for a period of one year from the date of purchase. Any and all implied warranties arising under and by virtue of state law shall similarly be limited to one year from date of purchase.

Some states do not allow limitation on how long an implied warranty lasts, so the above limitations may not apply to you. Sheridan will repair or replace, without charge, to the original purchase/consumer, any of its rifles that fail through defect in material or workmanship during the warranty period. The defective rifle must be returned, postage or shipping, prepaid to:

Sheridan Products  
2600 Chicory Road  
Racine, WI 53403

Sheridan shall not be liable under this warranty for any defect, failure, or malfunction of any of its products caused by abuse, misuse, unauthorized adjustments, improper ammunition, or

disassembling.

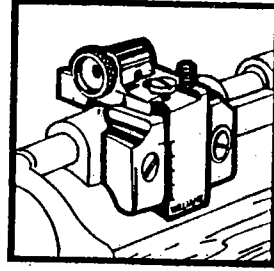
Please supply proof of purchase date when sending your rifle in for warranty repairs.

This warranty gives you specific legal rights, and you may also have other rights which vary from date to state.

For future reference, we suggest that you record the serial number located on the left side of the action tube forward of the receiver, on the cover of this manual.

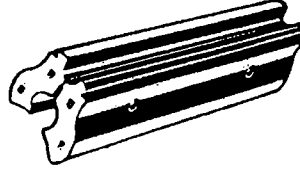
Write us for a catalog or see your Sheridan dealer.

MODEL 64 - Williams Peep Sight (for many Benjamin & Sheridan rifles.



Steel rod with handle is sized for all air rifles and pistols from BB-size through .22 caliber.

ORDER NO. 41



Model 61 - 2-Piece Intermount for installing scopes on rifles

7

SHERIDAN 5 mm  
AMMUNITION  
Packed 500 rounds  
per box.



FOR COMPETITIVE SHOOTING. Sheridan  
5mm Diablo Target-Type pellets. 500 rounds  
per box.

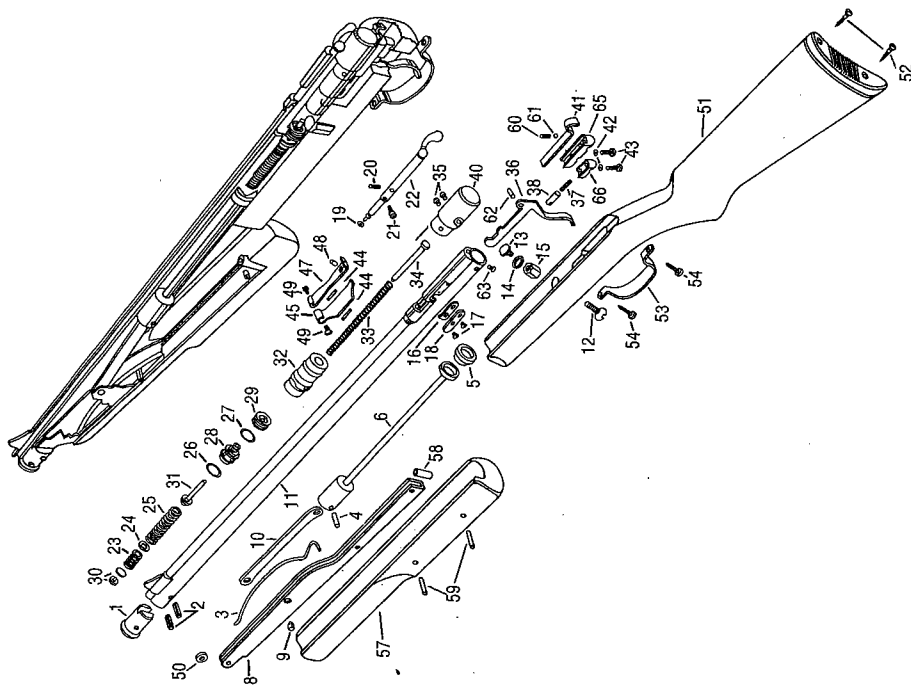


8

# SHERIDAN PNEUMATIC RIFLES PARTS LIST

For "Silver Streak" and "Blue Streak" Rifles Only  
C9 - CB9 Series .20 Caliber

Ref. Part No.	Part Name
1	C101 Muzzle Cap
2	C102 Spring Pin (2)
3	C207-A Pump Lever Spring
4	C210 Cross Head Pin
5	C218 Piston Head
6	CX201 Piston Rod Assembly
	CX201-1 Piston Rod Assembly with Piston Head (C218)
	CX202-A Pump Unit Assembly (Consists of Ref. No. 3, 8,9,10,50)
11	CX203-2-20 Tube Assembly (Blue)
11	CX203-2N-20 Tube Assembly (SLVR.)
12	C302 Receiver Screw
13	C304 Action Fastener Screw
14	C305 Action Fastener Washer
15	C306 Action Fastener Nut
16	N307 Cam Face RH or LH
17	C308 Cam Face Screw(2)
18	C309 Cam Face Cover
	CX401-1 Bolt Assembly Consists of No. 19,20,21,22
19	C401 Breech Seat
20	C403 Bolt Spring
21	C404-A Bolt Locking Lug
22	CX400-20 Bolt Sub-Assembly
23	C503-1 Intake Chamber Spring
24	C503-2 Chamber Spring Spacer
25	C503-3 Exhaust Chamber Spring
26	C506 V.G. Gasket (Synthetic)
27	C506-1 V.G. Gasket (Lead)
28	C507 Valve Guide
29	C508 V.G. Ret. Nut
30	CX502 Intake Valve Assembly
31	CX505-3 Exhaust Valve Assembly
32	C601-A Striker
33	N602 Mainspring
34	C603 Guide Pin



Ref. Part No.	Part Name
35	N631 Retaining Cap Screw (2)
36	N614-1 Trigger
37	N616 Trigger Spring
38	N626 Trigger Spring Pin
CX600	Main Spring Ret. Assembly (Consists of following)
40	NX604-1 Retaining Cap W/ Pin
41	N611-1 Safety Slice
42	N630 Split Lock Washer
43	N629 Socket Head Cap Screw
CX702	Rear Sight Assembly (Consists of following)
44	C701 Base Grip (2)
45	C702 Rear Sight Base
47	C704 R.S. Elevation Arm
48	C706 R.S. Elevation Screw
49	C708 R.S. Windage Screw (2)
50	C804 Hand Guard
51	CX800-A Butt Stock Assembly
52	C812 Butt Plate Screw
53	C807-A Trigger Guard
54	N808 Trigger Guard Screw
CX801-B	Fore-end Assembly (Consists of following)
57	C801-B Fore-end
58	C802 Fore-end Stop
59	C204 Fore-end Pin
CX202-A	Pump Unit Assembly
60	N627 Safety Spring
61	N628 Safety Ball
62	E615 Trigger Pin
63	N605-2 Retaining Cap Screw
65	N624 Safety Mount
66	N625 Trigger Spring Retainer
AC346	Special Disassembly/Assembly Tools (set of 3) (Consists of following)
AC3	Valve Guide Insert
AC4	Retaining Nut Wrench
AC6	Locking Lug Wrench

**WHEN ORDERING PARTS, SPECIFY MODEL, SERIAL NUMBER, PART NUMBER AND NAME OF PART.**