



EXPLODED VIEW PARTS AND PRICE LIST

MODEL 357 1357 PHASE I

CROSMAN CORPORATION
RT 5 & 20
EAST BLOOMFIELD, NY 14443

Phone: 1-800-724-7486
Parts Order Fax: 585-657-5405

C357EVP1 C1357EVP1

MODEL 3574 3576 3578 1357
PARTS AND PRICE LIST
PHASE I
MANUFACTURED 1982 to MAY 1995

<u>PART NUMBER</u>	<u>QTY PER</u>	<u>PART NAME</u>	<u>COST</u>
10602	1	VALVE ASSY	\$6.99
11331	1	GRIP ASS'Y L.H. (BLACK &GOLD)	\$1.90
11334	1	GRIP R.H. (BLACK &GOLD)	\$1.32
11335	1	TRIGGER (GOLD)	\$5.04
1357-001	1	B.B. CYLINDER	\$2.31
1357-002	1	B.B. BARREL 6"	\$1.94
1357-003	1	B B BARREL HSG.	\$3.18
1357-004	1	B B BARREL HSG. ASSY	\$8.82
2200-045	1	VALVE SPRING	\$1.00
357-003	1	BARREL HOUSING 4"	\$2.38
357-005	1	BARREL HOUSING RIB 4"	\$1.35
357-008	1	BARREL LATCH PLATE	\$1.00
357-009	1	BARREL HOUSING ASS'Y	\$7.76
357-011	1	ELEVATION SCREW	\$1.00
357-012	1	REAR SIGHT ASS'Y	\$2.59
357-013	1	PIERCING LEVER PIN	\$1.00
357-014	1	PIERCING LEVER	\$1.00
357-017	1	CYLINDER, 6 SHOT (BLACK)	\$1.00
357-018	1	HAMMER/LEVER PIN	\$1.00
357-020	1	BARREL HOUSING LATCH	\$1.00
357-021	1	LATCH SUPPORT	\$1.00
357-024	1	GRIP SCREW	\$1.00
357-026	1	HAMMER	\$1.64
357-028	1	HAMMER PAWL	\$1.00
357-030	1	HAMMER ASSEMBLY	\$2.56
357-031	1	TRIGGER SEAR	\$1.00
357-032	1	TRIGGER	\$.67
357-033	1	SAFETY LINK	\$1.00
357-034	1	SAFETY	\$.63
357-035	1	CYLINDER PLATE	\$1.00
357-036	1	CYLINDER DETENT	\$1.00
357-037	1	DETENT SPRING	\$1.00
357-040	1	VALVE WASHER	\$1.00
357-041	1	VALVE SEAL	\$1.00
357-042	1	PAWL SPRING	\$1.00
357-051	1	LEVER	\$.54
357-052	1	INDEX FINGER	\$1.00
357-053	1	LEVER BUSHING	\$1.00
357-055	1	BARREL WEIGHT 6"	\$.53
357-056	1	GUIDE COLLAR	\$.57
357-059	1	BARREL WEIGHT 4"	\$.42
357-100	1	BARREL HOUSING 6"	\$3.07
357-101	1	BARREL HOUSING RIB 6"	\$1.54
357-102	1	BARREL HOUSING ASS'Y 6"	\$9.44
357-103	1	BARREL 6"	\$2.67
357-110	1	CYLINDER, 10 SHOT (GRAY)	\$.52
357-203	1	BARREL 8" (STEEL)	\$3.18

PRICES ARE IN U.S. DOLLARS

MODEL 3574 3576 3578 1357
PARTS AND PRICE LIST
PHASE I
MANUFACTURED 1982 to MAY 1995

<u>PART NUMBER</u>	<u>QTY PER</u>	<u>PART NAME</u>	<u>COST</u>	
357-205	1	PIVOT BUSHING	\$1.00	
357-207	1	COVER (SILVER)	\$7.57	
357-208	1	FRAME ASS'Y (SILVER)	\$14.99	
357-209	1	GRIP, R.H. (BLACK & SILVER)	\$1.45	
357-211	1	GRIP ASS'Y, L.H. (BLACK & SILVER)	\$2.02	
357-213	1	BARREL HOUSING ASS'Y 8" (SILVER)	\$30.10	
357A002	1	COVER (BLACK)	\$3.61	use with 357A016
357A010	1	BARREL 4"	\$2.16	
357A015	1	PIERCING SCREW	\$1.00	
357A016	1	FRAME ASS'Y (BLACK)	\$10.26	use with 357A002
357A019	1	BARREL HOUSING SCREW	\$1.00	
357A022	1	GRIP, R.H. (BROWN)	\$1.39	
357A025	1	GRIP ASS'Y, L.H. (BROWN)	*	
357A029	1	SEAR SPRING	\$1.00	
357A043	1	VALVE SEAL RETAINING	\$1.00	
357A044	1	VALVE TUBE	\$0.76	
357A054	2	QUAD SEAL	\$1.00	each
357A057	1	TRIGGER SPRING	\$1.00	
357A203	1	BARREL 8" (BRASS)	\$5.05	
357A204	1	BARREL HOUSING ASS'Y 8" (use 357B204)	*	
357B046	1	PIERCING BODY	\$1.81	
357B048	1	PIERCING BODY ASS'Y	\$4.85	
357B049	1	VALVE ASSY (use 10602)	*	
357C027	1	HAMMER SPRING	\$1.00	
357C045	2	QUAD SEAL RETAINER	\$1.00	each
36-012	3	PIVOT PIN	\$1.00	each
38-028	1	PIERCING SCREEN	\$1.00	
38-117	2	FRAME SCREW	\$1.00	each
38-128	1	END SEAL	\$0.78	
38-130	1	O RING	\$0.96	
38A027	1	PIERCING PIN	\$0.56	

THIS PARTS AND PRICE LIST IS INTENDED TO BE AN INFORMATIONAL GUIDE IN ORDERING CROSMAN PARTS. IT IS NOT INSTRUCTIONAL MATERIAL AN WE THEREFORE ASSUME NO RESPONSIBILITY FOR THOSE WHO USE SAME WITHOUT PROPER FACTORY TRAINING.

PRICES AND PARTS ARE SUBJECT TO CHANGE WITHOUT NOTICE

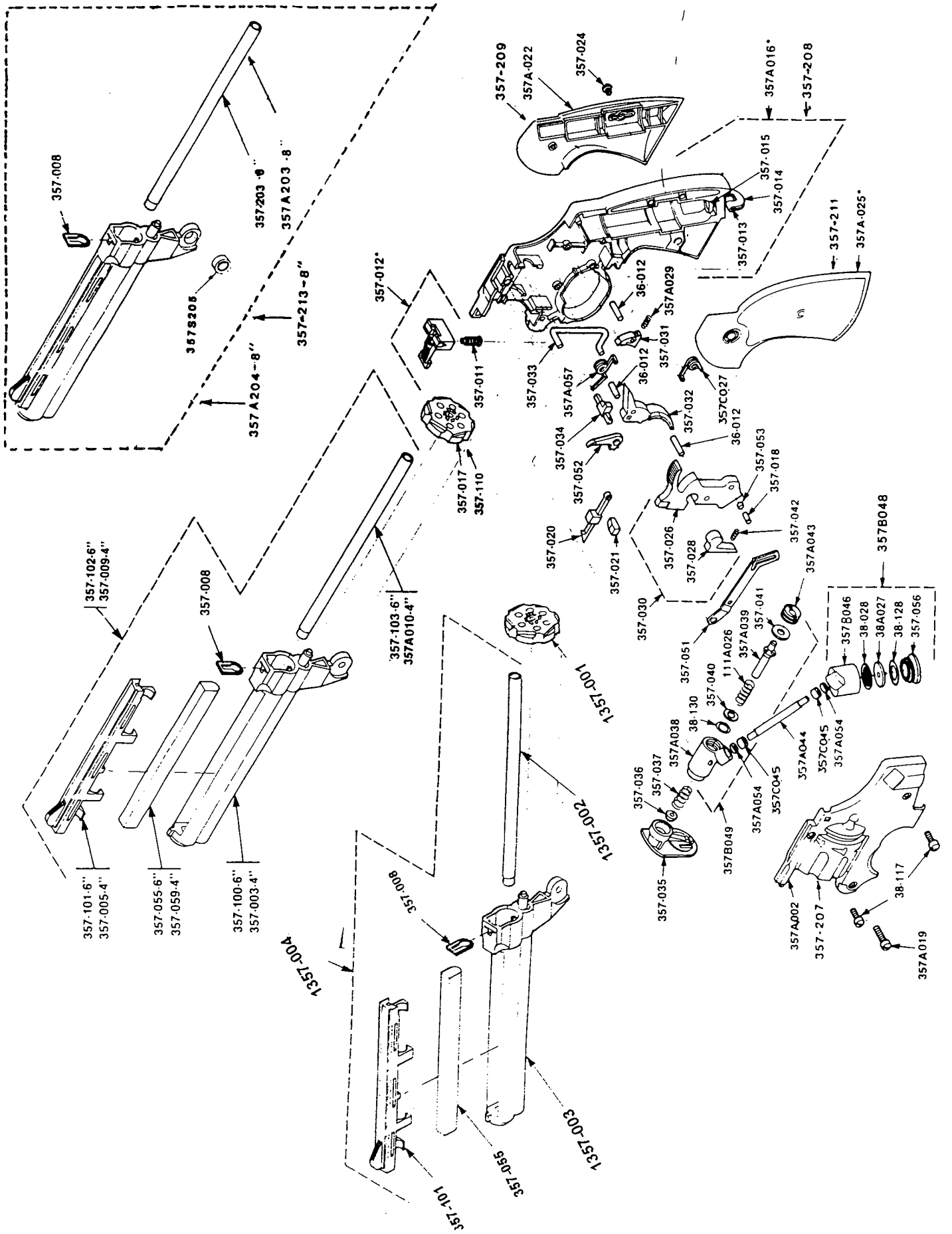
PLEASE ORDER BY PART NUMBER AND DESCRIPTION

CHECK OR MONEY ORDER FOR THE TOTAL PRICE MUST ACCOMPANY THE ORDER

*** NOT AVAILABLE**

UPDATED 10/01

PRICES ARE IN U.S. DOLLARS



* FACTORY ASSEMBLY ONLY