

# BENJAMIN®

## EXPLODED VIEW & PARTS LIST

### MODEL E-BPM77B, BPM77B-N & BPM22GPK MAXIMUS



Manufacture Start Dates: 4/1/16

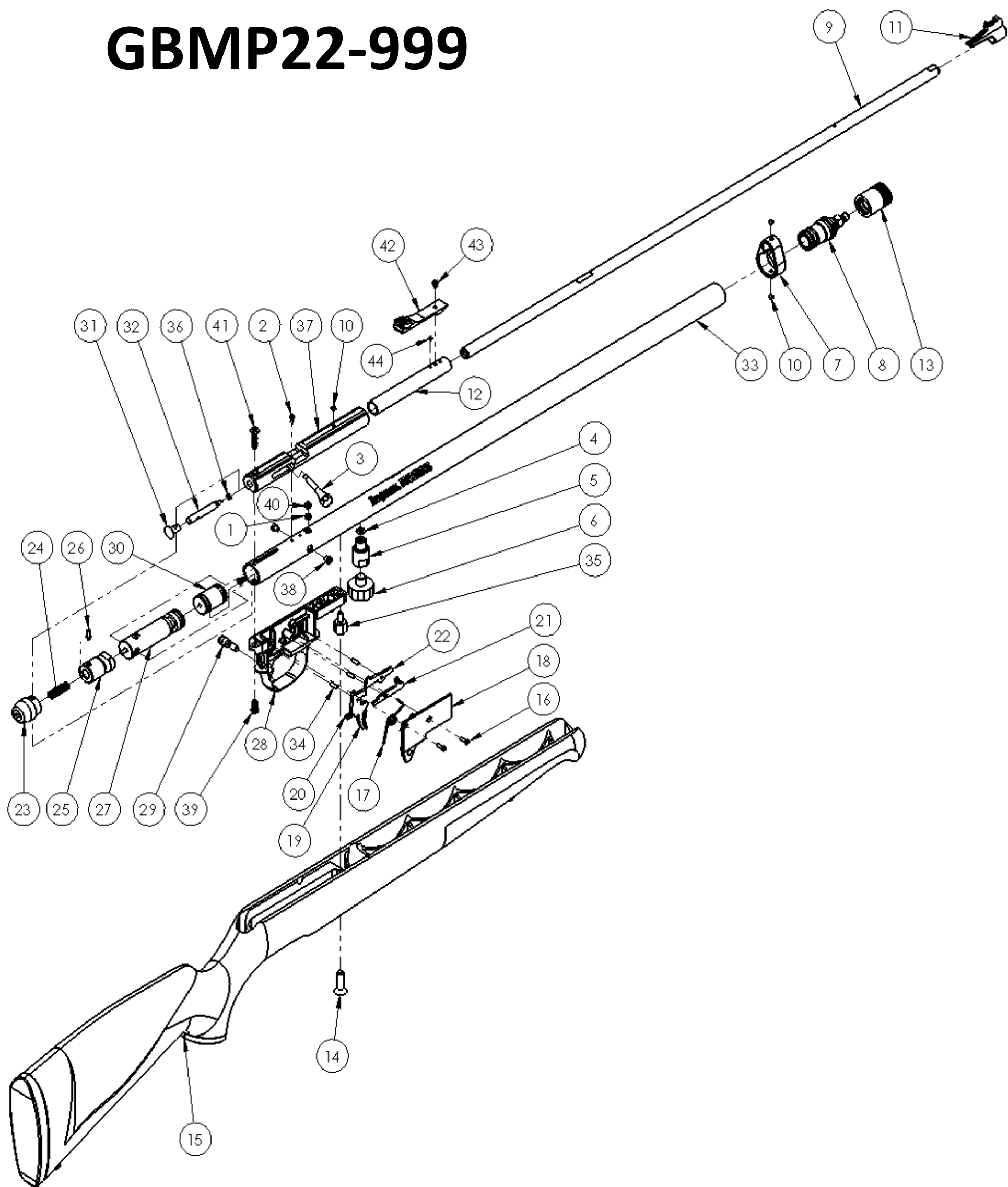
Last Update 2/16/17

CROSMAN  
CORPORATION 7629  
ROUTES 5 & 20  
BLOOMFIELD, NY 14469  
Phone: 1-800-724-7486  
Parts Order Fax: 585-657-5405  
[www.crosman.com](http://www.crosman.com)

- This EVP and parts list is intended to be an informational guide in ordering parts. It is not instructional material and we therefore assume no responsibility for those who use the same without proper factory training.
- Please order by part number and description.
- Check or money order for the total price must accompany the order.
- For current prices contact Crosman Corporation at 1-800-724-7486 or visit our website [www.crosman.com](http://www.crosman.com)

E-BPM77B, BPM77B-N & BPM22GPK

# GBMP22-999



PARTS LIST			
ITEM NO.	PART NUMBER	DESCRIPTION	QTY.
1	130-036	BREECH GASKET	1
2	1322B027	SCREW, 4-48 x250	1
3	GBMP22-012	HANDLE, BOLT	1
4	1761A023	O-Ring, #2-009	1
5	1761A017	ADAPTER, GAUGE	1
6	1761-014	MANOMETER	1
7	1761-021	BARREL BAND	1
8	1761-101	ADAPTER ASSEMBLY	1
9	GBMP22-050	BARREL .22 CAL	1
10	88-089	SET SCREW 8-32 x 125 CUP HEX HD	3
11	760-201	FRONT SIGHT	1
12	1761-013	SLEEVE, BARREL	1
13	1761-102	CAP ASSEMBLY	1
14	397-041	SCREW, 1/4-20 X .875 OVAL HEAD	1
15	GBMP22-105	STOCK ASSEMBLY, SYNTHETIC	1
16	1322-054	SCREW, 4-40 X .375 FHMS	2
17	262-020	SPRING-SEAR	1
18	262-002	COVER, TRIGGER CASING	1
19	262A004	TRIGGER	1
20	2260-011	SPRING, TRIGGER	1
21	262A003	LINK, TRIGGER	1
22	1322A048	SEAR	1
23	1761-012	PLUG, TUBE	1
24	GBMP-009	HAMMER SPRING	1
25	2300-050	STRIKER	1
26	2100A011	HAMMER PIN	1
27	GBMP22-101	VALVE ASSY	1
28	262B001	CASING, TRIGGER	1
29	GBMP-080	SAFETY	1
30	GBMP22-104	GAUGE PORT ASSY	1
31	AS2250-020	BREECH PLUG	1
32	GBMP22-011	BOLT, .22 CAL	1
33	GBMP-025	E-TUBE, .22 CAL	1
34	1322-045	PIN, .125 x .390	3
35	2260-012	LUG, STOCK	1
36	970-028	O-RING	1
37	1761-019	BREECH	1
38	1700-010	8-32 X .188, SHCS, LOW HEAD	2
39	130B031	SCREW, 8-32 x .437	1
40	GBMP22-010	SLEEVE, TRANSFER	1
41	AS2250-015	SCREW, 8-32 x .750	1
42	1761-026	SIGHT, REAR, WILLIAMS	1
43	178B-001	SCREW, #6-40 x .145, FSH	1
44	1761-020	SETSCREW, #6-40 x .094	1

\*\*BPM22GPK is a kit option that's includes pump, spinning target, Piranha pellets and safety glasses

E-BPM77B, BPM77B-N & BPM22GPK