

BENJAMIN®

EXPLODED VIEW & PARTS LIST

MODEL BPM77B12FP MAXIMUS



Manufacture Start Dates: 4/1/16

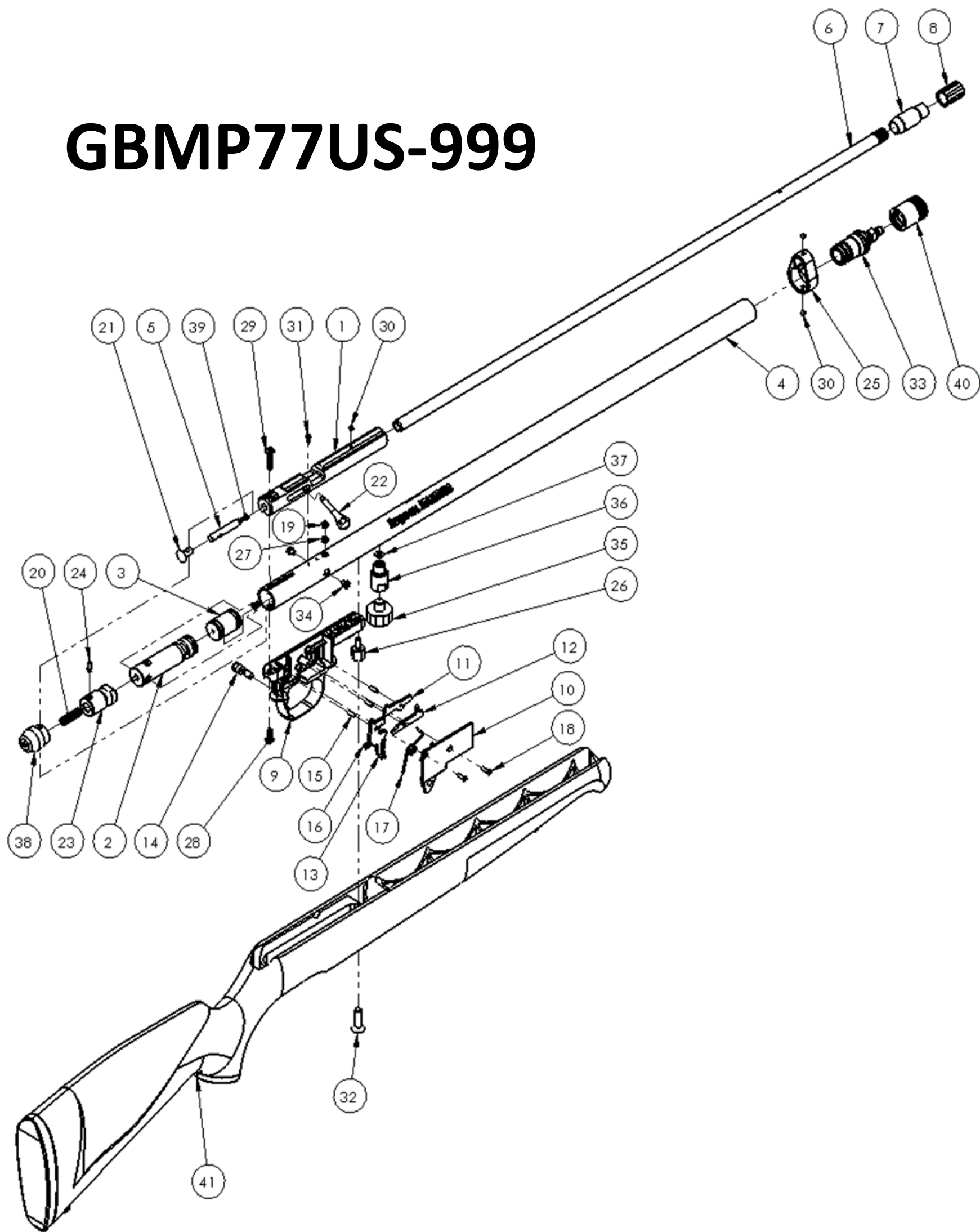
Last Update 2/16/17

CROSMAN
CORPORATION 7629
ROUTES 5 & 20
BLOOMFIELD, NY 14469
Phone: 1-800-724-7486
Parts Order Fax: 585-657-5405
www.crosman.com

- This EVP and parts list is intended to be an informational guide in ordering parts. It is not instructional material and we therefore assume no responsibility for those who use the same without proper factory training.
- Please order by part number and description.
- Check or money order for the total price must accompany the order.
- For current prices contact Crosman Corporation at 1-800-724-7486 or visit our website www.crosman.com

BPM77B12FP

GBMP77US-999



| PARTS LIST | | | |
|------------|---------------|---------------------------------|------|
| ITEM NO. | PART NUMBER | DESCRIPTION | QTY. |
| 1 | AS2250-025 | BREECH | 1 |
| 2 | GBMP22-101 | VALVE ASSY | 1 |
| 3 | GBMP22-104 | GAUGE PORT ASSY | 1 |
| 4 | GBMP-027 | 12 FTLB TUBE, .177 CAL | 1 |
| 5 | GBMP77-011 | BOLT, .177 CAL | 1 |
| 6 | 20-GBMP77-001 | BARREL, .177 CAL | 1 |
| 7 | 6-2250XL-001 | ADAPTER, SILENCER, UK | 1 |
| 8 | GBMP-033 | DUST COVER | 1 |
| 9 | 262B001 | CASING, TRIGGER | 1 |
| 10 | 262-002 | COVER, TRIGGER CASING | 1 |
| 11 | 1322A048 | SEAR | 1 |
| 12 | 262A003 | LINK, TRIGGER | 1 |
| 13 | 262A004 | TRIGGER | 1 |
| 14 | GBMP-080 | SAFETY | 1 |
| 15 | 1322-045 | PIN, .125 x .390 | 3 |
| 16 | 2260-011 | SPRING, TRIGGER | 1 |
| 17 | 262-020 | SPRING-SEAR | 1 |
| 18 | 1322-054 | SCREW, 4-40 X .375 FHMS | 2 |
| 19 | 6-GBMP77-002 | SLEEVE, TRANSFER | 1 |
| 20 | 8-GBMP77-009 | HAMMER SPRING | 1 |
| 21 | AS2250-020 | BREECH PLUG | 1 |
| 22 | GBMP22-012 | HANDLE, BOLT | 1 |
| 23 | 2300-050 | STRIKER | 1 |
| 24 | 2100A011 | HAMMER PIN | 1 |
| 25 | 1761-021 | BARREL BAND | 1 |
| 26 | 2260-012 | LUG, STOCK | 1 |
| 27 | 130-036 | BREECH GASKET | 1 |
| 28 | 130B031 | SCREW, 8-32 x .437 | 1 |
| 29 | AS2250-015 | SCREW, 8-32 x .750 | 1 |
| 30 | 88-089 | SET SCREW 8-32 x 125 CUP HEX HD | 3 |
| 31 | 1322B027 | SCREW, 4-48 x250 | 1 |
| 32 | 397-041 | SCREW, 1/4-20 X .875 OVAL HEAD | 1 |
| 33 | 1761-101 | ADAPTER ASSEMBLY | 1 |
| 34 | 1700-010 | 8-32 X .188, SHCS, LOW HEAD | 2 |
| 35 | 1761-014 | MANOMETER | 1 |
| 36 | 1761A017 | ADAPTER, GAUGE | 1 |
| 37 | 1761A023 | O-Ring, #2-009 | 1 |
| 38 | 1761-012 | PLUG, TUBE | 1 |
| 39 | 397-062 | SEAL, .177 BREECH O-RING | 1 |
| 40 | 1761-102 | CAP ASSEMBLY | 1 |
| 41 | GBMP22-105 | STOCK ASSEMBLY, SYNTHETIC | 1 |