

BENJAMIN®

EXPLODED VIEW & PARTS LIST

MODEL E-BPM77B & BPM77B-N MAXIMUS



Manufacture Start Dates: 4/1/16

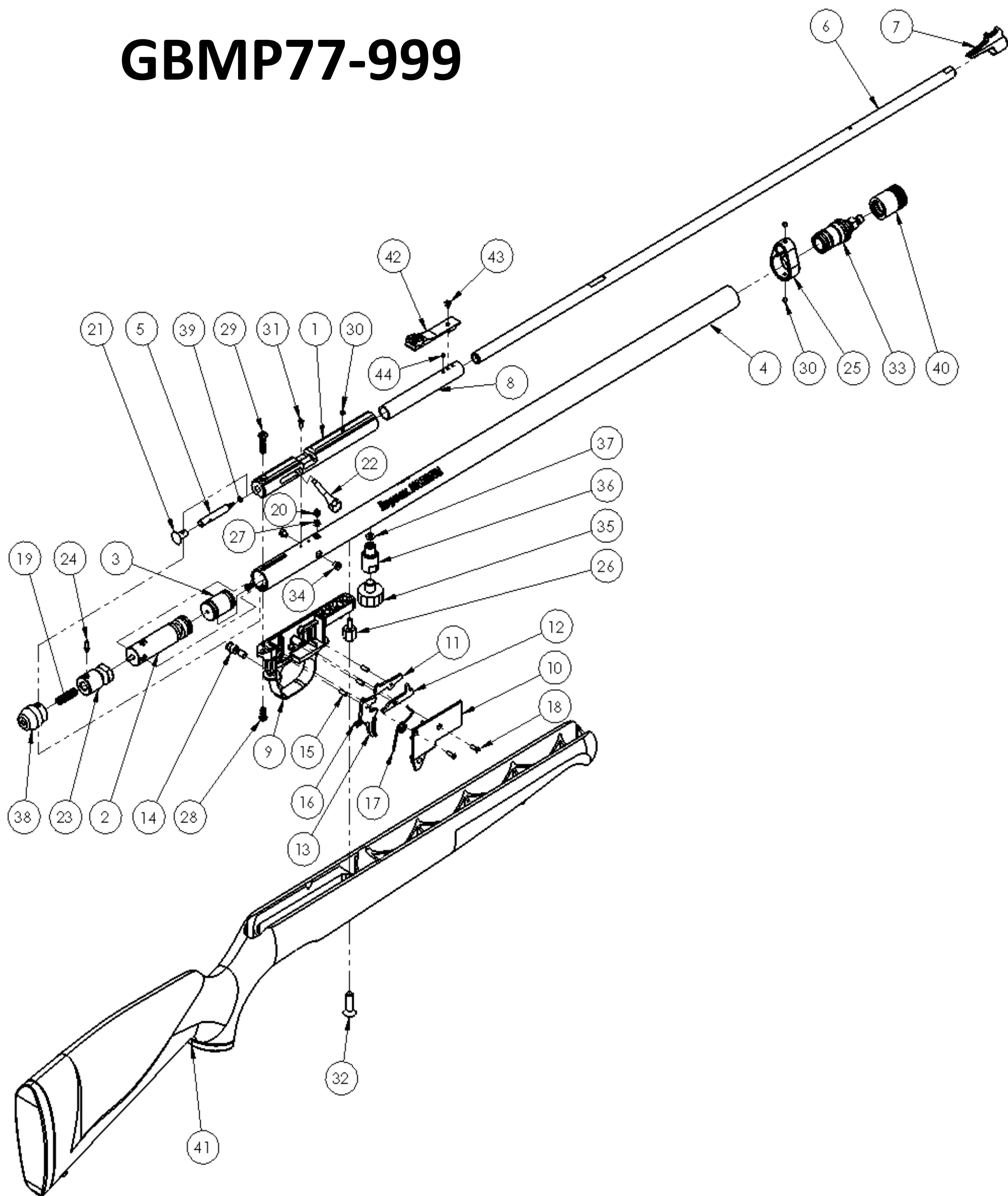
Last Update 2/16/17

CROSMAN
CORPORATION 7629
ROUTES 5 & 20
BLOOMFIELD, NY 14469
Phone: 1-800-724-7486
Parts Order Fax: 585-657- 5405
www.crosman.com

- This EVP and parts list is intended to be an informational guide in ordering parts. It is not instructional material and we therefore assume no responsibility for those who use the same without proper factory training.
- Please order by part number and description.
- Check or money order for the total price must accompany the order.
- For current prices contact Crosman Corporation at 1-800-724-7486 or visit our website www.crosman.com

E-BPM77B & BPM77B-N

GBMP77-999



PARTS LIST			
ITEM NO.	PART NUMBER	DESCRIPTION	QTY.
1	1761-019	BREECH	1
2	GBMP22-101	VALVE ASSY	1
3	GBMP22-104	GAUGE PORT ASSY	1
4	GBMP-024	E-TUBE, .177 CAL	1
5	GBMP77-011	BOLT, .177 CAL	1
6	GBMP77-050	BARREL, .177 CAL	1
7	760-201	FRONT SIGHT	1
8	1761-013	SLEEVE, BARREL	1
9	262B001	CASING, TRIGGER	1
10	262-002	COVER, TRIGGER CASING	1
11	1322A048	SEAR	1
12	262A003	LINK, TRIGGER	1
13	262A004	TRIGGER	1
14	GBMP-080	SAFETY	1
15	1322-045	PIN, .125 x .390	3
16	2260-011	SPRING, TRIGGER	1
17	262-020	SPRING-SEAR	1
18	1322-054	SCREW, 4-40 X .375 FHMS	2
19	GBMP-009	HAMMER SPRING	1
20	GBMP22-010	SLEEVE, TRANSFER	1
21	AS2250-020	BREECH PLUG	1
22	GBMP22-012	HANDLE, BOLT	1
23	2300-050	STRIKER	1
24	2100A011	HAMMER PIN	1
25	1761-021	BARREL BAND	1
26	2260-012	LUG, STOCK	1
27	130-036	BREECH GASKET	1
28	130B031	SCREW, 8-32 x .437	1
29	AS2250-015	SCREW, 8-32 x .750	1
30	88-089	SET SCREW 8-32 x 125 CUP HEX HD	3
31	1322B027	SCREW, 4-48 x250	1
32	397-041	SCREW, 1/4-20 X .875 OVAL HEAD	1
33	1761-101	ADAPTER ASSEMBLY	1
34	1700-010	8-32 X .188, SHCS, LOW HEAD	2
35	1761-014	MANOMETER	1
36	1761A017	ADAPTER, GAUGE	1
37	1761A023	O-Ring, #2-009	1
38	1761-012	PLUG, TUBE	1
39	397-062	SEAL, .177 BREECH O-RING	1
40	1761-102	CAP ASSEMBLY	1
41	GBMP22-105	STOCK ASSEMBLY, SYNTHETIC	1
42	1761-026	SIGHT, REAR, WILLIAMS	1
43	178B-001	SCREW, #6-40 x .145, FSH	1
44	1761-020	SETSCREW, #6-40 x .094	1